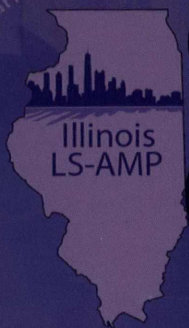
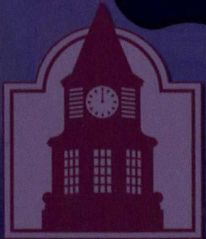


Illinois Alliance for Minority
Education



Headquarters at
Chicago State University

Bridge to the Doctorate



South
Illinois University
Carbondale
Graduate College

NSF

Message from the Executive Director Illinois LSAMP

The Illinois Louis Stokes Alliance for Minority Participation (Illinois LSAMP) accepted the challenge to improve the flow of underrepresented students to science, technology, engineering and technology (STEM) careers by preparing them to perform at the highest levels of professionalism. The Bridge to the Doctorate (BD) is a natural outflow from the impressive national pool of more than 25,000 STEM students produced yearly. These excellent students have undergone vigorous training to obtain bachelors degrees in LSAMP institutions across the United States.

In order to continue its competitive edge in STEM it was necessary that the United States enlist the participation of all of its citizens. The unique vision of the National Science Foundation (NSF) in developing and offering the BD program to the public has greatly enhanced the likelihood that in the foreseeable future there will be a significant pool of well prepared underrepresented scientists and engineers ready to take essential STEM positions in industry, research and in academia. The combined efforts of the NSF and higher education institutions have been instrumental in implementing the BD program.



Dr. Marian Wilson Comer

The Illinois LSAMP has developed successful BD students at two institutions. Twenty-four students have matriculated at Southern Illinois University at Carbondale and 24 are at the University of Illinois at Chicago. The success of these programs has been accomplished through:

- * Ensuring access to research involvement by pairing students with appropriate mentors;
- * Establishing cluster groups of students to function as cohorts for easy exchange of ideas and information among fellow students;
- * Providing funds to free students from the necessity of working in order that they may have more time to concentrate on studies;
- * Developing activities for students to become aware of internal and external services and resources, and to improve leadership ability; and,
- * Exposing students to professional activities such as proposal writing, conference presentations and networking in order to motivate them to continue striving for excellence in their personal, academic and professional lives for years to come.

The expansion of the BD program to include the participation of additional institutions demonstrates the commitment of both the NSF and the academic community to provide solid foundations for underrepresented students in STEM that will serve the nation, the world, and the future. Illinois LSAMP institutions, faculty and students are proud to be a part of this grand program.

Marian Wilson Comer, PhD
Executive Director
Illinois LSAMP

Greetings!

The University of Illinois at Chicago has been an active partner in the Louis Stokes Alliance since its inception. As such, we are honored to be the current Illinois LSAMP Bridge to the Doctorate program site.

Working to achieve the program's goal of increasing the number of underserved and underrepresented students who obtain a PhD in Science, Technology, Engineering, and Mathematics (STEM) disciplines is a collaborative effort. At UIC, faculty and staff from the Colleges of Medicine, Engineering, Liberal Arts & Sciences, and Pharmacy, the School of Public Health, and Graduate College are engaged in this important endeavor. They work closely to provide students with the academic preparation, mentoring, research experiences, and professional development opportunities necessary to prepare them for STEM careers in academia and in industry.



Dr. William Walden

Supporting UIC in our efforts to encourage and educate the next generation of researchers are colleagues from other LSAMP colleges and universities in Illinois and across the United States. These intra- and inter-campus relationships create wonderful opportunities for the scientific and academic communities, but especially for students – ones we hope will inspire them to think and function creatively and pursue their interests and ambitions.

The following brochure has been assembled in part to provide prospective students with details about Bridge to the Doctorate at UIC. To them I say – we welcome your exploration of and application to our doctoral programs and the BD program at UIC. Best wishes to you, now and in the future.

Sincerely,

William E. Walden, PhD
Director, Bridge to the Doctorate at UIC
Special Assistant to the Provost for Diversity and
Professor, Microbiology and Immunology

The Directorate for Education and Human Resources (EHR) through the Division of Human Resource Development (HRD) announced the Louis Stokes Alliances for Minority Participation (LSAMP) supplementary activity, Bridge to the Doctorate, beginning February 2003. The goal of these supplements is to fund an initial graduate degree bridge activity to Phase III LSAMP Alliance institutions. Approximately 25,000 baccalaureate degree recipients are produced annually at LSAMP institutions.

The Bridge to the Doctorate activity includes effective strategies for recruiting, retaining, educating and graduating student participants. A plan for formally connecting a significant number of newly minted LSAMP master's degree graduates to doctoral degree programs is in place at participating institutions. In addition, participating students will be tracked into doctoral degree programs and the workforce, including the professoriate. Participating institutions are providing highly valued activities such as mentoring of students, opportunities for travel, participation in professional meetings and hosting seminars and workshop.

Since 1993 Chicago State University has served as lead institution for ILSAMP which includes Depaul University, Governors State University, Illinois Institute of Technology, Illinois State University, Northeastern Illinois University, Southern Illinois University at Carbondale, Southern Illinois University at Edwardsville, the University of Illinois at Chicago, nine community colleges and Argonne National Laboratory.

The establishment of the NSF Bridge to the Doctorate Program (BDP) provides incentive and access to graduate study for LSAMP graduates. The Illinois LSAMP program has been the recipient of four BD cohorts. Two of these programs were located at Southern Illinois University at Carbondale and two are currently located at the University of Illinois at Chicago (UIC).



Dr. A. James Hicks, NSF
National Program Director
LSAMP & BD



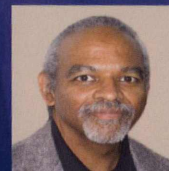
Dr. Elnora D. Daniel
CSU President & PI
Illinois LSAMP



Dr. Marian Wilson Comer
Executive Director & Co-PI
Illinois LSAMP



Dr. LeRoy Jones II
Project Director
Illinois LSAMP



Dr. William Walden
BDP PI
UIC LSAMP BDP



Ms. Denise Yates
BDP Site Coord. & Co-PI
UIC LSAMP BDP

Illinois LSAMP Bridge to the Doctorate Overview



ILSAMP Bridge to the Doctorate Fellows Cohort 2, 3, and 4 at Illinois LSAMP Regional Conference



Headquarters at
Chicago State University

Through the Bridge to the Doctorate, Fellows take part in various academic support and professional development activities facilitated by NSF, the Illinois LSAMP, UIC, and their respective academic Departments. These activities are designed to stimulate continued development of research and academic skills and to provide a venue for cultivating creativity in the development and exchange of ideas.

BD at UIC Support Highlights

- \$30,000 stipend for the first 2 years of doctoral study
- Full tuition and fee support
- Travel to regional, and national, and international research conferences



David Weed, BD Fellow: Illinois LSAMP Regional Conference



UIC BD Summer Institute Retreat at Starved Rock, IL

Illinois LSAMP Bridge to the Doctorate Activities



(clockwise from top left)
2nd Annual BD Summer Institute Retreat at Starved Rock;
Lab duties,
2008 Recognition Luncheon)

Illinois LSAMP Bridge to the Doctorate Activities



(clockwise from top right) Research presentation at 2nd Annual BD Summer Institute Retreat, Chemistry Lab duties, NSF JAM 2007, Washington, DC

Bridge to the Doctorate at the University of Illinois at Chicago

Cohort 6



Renaldo Evans
Undergraduate Institution:
Bethune Cookman
UIC Academic Program:
Bioengineering (PhD)
Florida-Georgia LSAMP



Diego Friere
Undergraduate Institution:
University of IL at Chicago
UIC Academic Program:
Computer Engineering (PhD)
Illinois LSAMP



Crystal Guzman
Undergraduate Institution:
University of IL at Chicago
UIC Academic Program:
Ecology and Evolution (PhD)
Illinois LSAMP



Crystalann Jones
Undergraduate Institution:
Chicago State University
UIC Academic Program:
Chemistry (PhD)
Illinois LSAMP



P. David McMullen
Undergraduate Institution:
Miami University (Ohio)
UIC Academic Program:
Medical Scientist Training Program (PhD)
Ohio LSAMP



Geovannie Ojeda Torres
Undergraduate Institution:
University of Puerto Rico, Rio Piedras
UIC Academic Program:
Chemistry (PhD)
Puerto Rico LSAMP



M. Adam Palmer
Undergraduate Institution:
Texas State University
UIC Academic Program:
Neuroscience (PhD)
Texas System LSAMP



Jan Raphael Sagun
Undergraduate Institution:
University of IL at Chicago
UIC Academic Program:
Electrical Engineering (PhD)
Illinois LSAMP



Elliya Sinkala
Undergraduate Institution:
Vanderbilt University
UIC Academic Program:
Bioengineering (PhD)
Tennessee LSAMP



Shalina Taylor
Undergraduate Institution:
Florida A&M University
UIC Academic Program:
Pharmacology (PhD)
Florida-Georgia LSAMP

Bridge to the Doctorate at the University of Illinois at Chicago

Cohort 5



Sonja Artis
Undergraduate Institution:
Oakwood College
UIC Academic Program:
Neuroscience (PhD)
Alabama LSAMP



Dorin Bogdan
Undergraduate Institution:
University of IL at Chicago
UIC Academic Program:
Civil Engineering (PhD)
Illinois LSAMP



Tyvette Hilliard
Undergraduate Institution:
Chicago State University
UIC Academic Program:
Medicinal Chemistry (PhD)
Illinois LSAMP



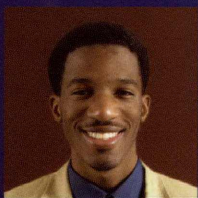
Kristin Ivy
Undergraduate Institution:
Grambling State University
UIC Academic Program:
Biochemistry (PhD)
Louisiana LSAMP



Natalie King
Undergraduate Institution:
Oakwood College
UIC Academic Program:
Neuroscience (PhD)
Alabama LSAMP



Kristine Lynn
Undergraduate Institution:
University of Illinois at Chicago
UIC Academic Program:
Environmental & Occupational
Health Sciences
Illinois LSAMP



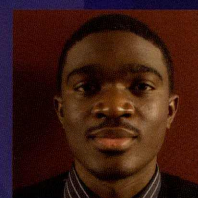
Ikenna Madueke
Undergraduate Institution:
Chicago State University
UIC Academic Program:
Medical Scientist Training Program (PhD)
Illinois LSAMP



Leah Page
Undergraduate Institution:
Southern University
UIC Academic Program:
Chemistry (PhD)
Louisiana LSAMP



Mandek Richardson
Undergraduate Institution:
University of South Florida
UIC Academic Program:
Bioengineering (PhD)
Florida-Georgia LSAMP



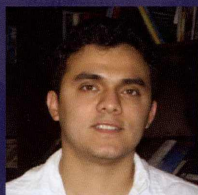
O'Neil Shand
Undergraduate Institution:
University of Florida
UIC Academic Program:
Microbiology and Immunology (PhD)
Florida-Georgia LSAMP



Tanganyika Wilder
Undergraduate Institution:
Florida A&M University
UIC Academic Program:
Physiology and Biophysics (PhD)
Florida-Georgia LSAMP

Bridge to the Doctorate at the University of Illinois at Chicago

Cohort 4



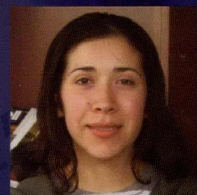
Wilson Barajas
Undergraduate Institution:
University of Illinois at Chicago
UIC Academic Program:
Physics (PhD)
Illinois LSAMP



Janai Carr
Undergraduate Institution:
University of California at San Diego
UIC Academic Program:
Medical Science Training Program (PhD)
California LSAMP



Senta Furman
Undergraduate Institution:
Wayne State University
UIC Academic Program:
Medical Scientist Training Program (PhD)
Michigan LSAMP



Itzel Godinez
Undergraduate Institution:
University of Illinois at Chicago
UIC Academic Program:
Civil and Materials Engineering (PhD)
Illinois LSAMP



Troy Hernandez
Undergraduate Institution:
University of Illinois at Chicago
UIC Academic Program:
Statistics (PhD)
Illinois LSAMP



Nicole Jones
Undergraduate Institution:
Chicago State University
UIC Academic Program:
Anatomy and Cell Biology (PhD)
Illinois LSAMP



Angene Milton
Undergraduate Institution:
Chicago State University
UIC Academic Program:
Anatomy and Cell Biology (PhD)
Illinois LSAMP



Evelyn Nwabuisi
Undergraduate Institution:
University of Illinois at Chicago
UIC Academic Program:
Anatomy and Cell Biology (PhD)
Illinois LSAMP



Antonio Olivo
Undergraduate Institution:
University of Illinois at Chicago
UIC Academic Program:
Physiology (PhD)
Illinois LSAMP



Laura Pedro Rosa
Undergraduate Institution:
University of Puerto Rico at Rio Piedras
UIC Academic Program:
Chemistry (PhD)
University of Puerto Rico LSAMP



Christel Rushing
Undergraduate Institution:
University of Florida
UIC Academic Program:
Microbiology and Immunology (PhD)
Florida-Georgia LSAMP



Stephanie Stokes
Undergraduate Institution:
Jackson State University
UIC Academic Program:
Environmental and Occupational
Health Sciences (PhD)
Mississippi LSAMP



Lassandra Walker
Undergraduate Institution:
Chicago State University
UIC Academic Program:
Environmental and Occupational
Health Sciences (PhD)
Illinois LSAMP



David Weed
Undergraduate Institution:
University of Illinois at Chicago
UIC Academic Program:
Bioengineering (PhD)
Illinois LSAMP

Bridge to the Doctorate at Southern Illinois University at Carbondale

Cohort 3



Levenia Baker
B.S. Chemistry, Alcorn State University
Graduate Major: Molecular, Cellular and Systemic Physiology



Angela Bolling
B.S. Mechanical Engineering, Southern Illinois University Edwardsville
Graduate Major: Mechanical Engineering



Harriet Crockett
B.S. Biology, Alcorn State University
Graduate Major: Molecular, Cellular and Systemic Physiology



Deidra Felton
B.S. Food and Nutritional Sciences, North Carolina Agricultural and Technical State University. Graduate Major: Animal Science



Nina Hickland
B.S. Electrical Engineering, Southern Illinois University Carbondale.
Graduate Major: Electrical Engineering



Nastassia Jones
B.S. Biology, Albany State University
Graduate Major: Molecular Biology, Microbiology and Biochemistry



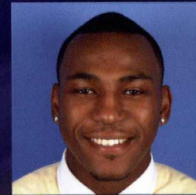
Alex Meredith
B.S. Agricultural Business, Delaware State University
Graduate Major: Agricultural Education



Lola Olufemi
B.S. Biology, DePaul University.
Graduate Major: Molecular Biology, Microbiology and Biochemistry



Eboni Perkins
B.S. Chemistry, Chicago State University.
Graduate Major: Chemistry/ Organic



Michael Simelton
B.S. Industrial Engineering Technology, Southeast Missouri State University.
Graduate Major: Manufacturing Systems/ Technology



Anthony Stevens
B.S. Geology, Southern Illinois University Carbondale.
Graduate Major: Geology



Earlene Thompson
B.S. Computer Science, Jackson State University.
Graduate Major: Computer Science



Jesse Vargas
B.S. Chemistry and Biology, University of California Irvine
Graduate Major: Molecular, Cellular and Systemic Physiology



Robert Walker
B.S. Biochemistry, Alcorn State University.
Graduate Major: Molecular, Cellular and Systemic Physiology



Southern
Illinois University
Carbondale
Graduate College

Bridge to the Doctorate at Southern Illinois University at Carbondale

Cohort 2



Robyn Alexander
B.S., Chemistry, Chicago State
University, Chicago, IL
Graduate Major: Analytical Chemistry



Gretchen Flohr
B.S., M.S., Conservation
Biology, San Jose State University, San Jose,
Graduate major: Zoology



Juan Garcilazo
B.S., M.S., Civil Engineering,
Southern Illinois University
Carbondale, Carbondale, IL
Graduate major: Civil Engineering



Melique Hoover
B.S., Electrical Engineering,
Southern Illinois University
Carbondale, Carbondale, IL
Graduate major: Physics



Narcrisha Norman
B.S., Mechanical Engineering,
Southern Illinois University
Carbondale, Carbondale,



Yoana Rosales
B.S., Environmental Biology,
Chicago State University, Chicago, IL
Graduate Major: Organic Geochemistry



Kara Scott
B.S., Physics, Chicago State
University, Chicago, IL, 2003.
Graduate Major: Mechanical Engineering



John Shell
B.S., M.S., Electrical Engineering,
Southern Illinois University
Carbondale, Carbondale
Graduate Major:
Electrical Engineering
(Computer Engineering)



Renee Lopez Smith
B.S., Plant Biology, Southern
Illinois University Carbondale,
Carbondale, IL
Graduate major: Plant Biology

Not Pictured

Cortez McBerry
B.S., Microbiology, Southern
Illinois University Carbondale, Carbondale, IL,
Graduate major: Molecular Biology,
Microbiology and Biochemistry



Dr. Karen Renzaglia, PhD (left)
Program Director and Research Professor, Plant Biology
and
Patricia McNeil (right)
Program Coordinator and Assistant Dean, Graduate School



Southern
Illinois University
Carbondale
Graduate College

Illinois LSAMP Bridge to the Doctorate Funding at a Glance

Bridge to the Doctorate, SIUC Cohort 2 Current Status

Students Enrolled in Doctoral Programs

Name	Doctoral Major	Institution	City	State
Gretchen Flohr	Zoology	Southern Illinois University at Carbondale	Carbondale	Illinois
Juan Garcilazo	Civil and Environmental Engineering	Southern Illinois University at Carbondale	Carbondale	Illinois
Cortez McBerry	Immunology and Biology	University of Cincinnati	Cincinnati	Ohio
Nacrisha Norman	Aerospace Engineering	Old Dominion University	Norfolk	Virginia
John Shell	Engineering Sciences	Southern Illinois University at Carbondale	Carbondale	Illinois

Illinois LSAMP Bridge to the Doctorate, SIUC Cohort 3 Current Status

Students Enrolled in Doctoral Programs

Name	Doctoral Major	Institution	City	State
Nastassia Jones	Microbiology & Biochemistry/ Cellular & Systemic Physiology	Southern Illinois University at Carbondale	Carbondale	Illinois
Lola Olufemi	Molecular Biology	Southern Illinois University at Carbondale	Carbondale	Illinois
Eboni Perkins	Organic Chemistry	Southern Illinois University at Carbondale	Carbondale	Illinois
Jesse Vargas	Biology	University of California at San Diego	San Diego	California
Robert Walker	Neuroscience	University of Tennessee	Memphis	Tennessee

Students Entering Careers in STEM Disciplines

Name	Current Position	Institution	City	State
Melique Hoover	Physics MS Student	Southern Illinois University at Carbondale	Carbondale	Illinois
Renee Lopez-Smith	Plant Biology MS Student	Southern Illinois University at Carbondale	Carbondale	Illinois
Yoanna Rosales	MS Geology 2005	Homemaker	Carbondale	Illinois
Kara Scott	Geospatial Analyst – MS 2007	Department of Defense – Homeland Security	Chicago	Illinois
Michael Simelton	Mgf./Quality Engineer – MS 2007	AISIN Manufacturing	Marion	Illinois
Anthony Stevens	Geology MS Student	Southern Illinois University at Carbondale	Carbondale	Illinois

Students Entering Careers in STEM Disciplines

Name	Current Position	Institution	City	State
Lavenia Baker	Associate Research Scientist – MS 2007	Pfizer	Groton	Connecticut
Angela Bolling	Design Thermal Engineer - MS 2007	Nooter/Eriksen	Fenton	Missouri
Harriet Crockett	Research Technologist – MS 2007	St. Jude Children's Research Hospital	Memphis	Tennessee
Deidra Felton	MS Animal Science 2007	Unknown	East St. Louis	Illinois
Nina Hickland	Program Manager – MS 2007	Microsoft	Tucson	Arizona
Alex Meredith	Adjunct Professor – MS 2007	Delaware State University	Dover	Delaware
Earlene Thompson	Researcher – MS 2007	Caterpillar, Inc.	East Peoria	Illinois

Illinois LSAMP Bridge to the Doctorate Funding at a Glance

Illinois LSAMP Bridge to the Doctorate, UIC Cohort 4 Current Status

Students Enrolled in Doctoral Programs (13/14)

Name	Undergraduate Degree	Undergraduate Major	Undergraduate Institution	Year of Degree	Doctoral Studies Major
Wilson Barajas	B.S.	Physics	University of Illinois at Chicago	2004	Physics
Janai Carr	B.S.	Biology	University of California at San Diego	2002	Developmental Genetics
Senta Furman	B.S.	Biology	Wayne State University	2003	Psychiatry & Neuroscience
Itzel Godinez	B.S.	Physics	University of Illinois at Chicago	2005	Civil and Materials Engineering
Troy Hernandez	B.S.	Mathematics & Physiology	University of Illinois at Chicago	2006	Statistics
Nicole Jones	B.S.	Biology	Chicago State University	2005	Anatomy & Cell Biology
Angene Milton	B.S.	Biology	Chicago State University	2004	Biological Sciences
Evelyn Nwabuisi	B.S.	Anatomy	University of Illinois at Chicago	2004	Anatomy & Cell Biology
Laura Pedro-Rosa	B.S.	Chemistry	University of Puerto Rico at Rio Piedras	2005	Chemistry
Antonio Olivo	B.S.	Biology	University of Illinois at Chicago	2003	Physiology
Christel Rushing	B.S.	Microbiology	University of Florida	2006	Microbiology & Immunology
S. Leah Stokes *	B.S.	Biology	Jackson State University	2005	Environmental & Occupational Health Sciences
Lassandra Walker	B.S.	Biology	Chicago State University	2001	Environmental & Occupational Health Sciences
David Weed	B.S.	Bioengineering	University of Illinois at Chicago	2006	Bioengineering

*Student enrolled in programs requiring completion of masters curriculum prior to doctoral study

Illinois LSAMP Bridge to the Doctorate, UIC Cohort 5 Current Status

Students Enrolled in Doctoral Programs (10/11)

Name	Undergraduate Degree	Undergraduate Major	Undergraduate Institution	Year of Degree	Doctoral Studies Major
Sonja Artis	B.S.	Biology	Oakwood University	2007	Neuroscience
Dorin Bogdan	B.S.	Civil & Materials Engineering	University of Illinois at Chicago	2007	Civil & Materials Engineering
Tyvette Hilliard	B.S.	Chemistry	Chicago State University	2007	Medicinal Chemistry
Kristin Ivy	B.S.	Biology	Grambling State University	2007	Biochemistry & Molecular Genetics
Natalie King	BS	Biology	Oakwood University	2007	Neuroscience
Kristine Lynn *	B.S.	Chemical Engineering	University of Illinois at Chicago	2007	Environmental & Occupational Health Sciences
Ikenna Madueke	B.S.	Biology	Chicago State University	2007	Biochemistry & Molecular Genetics
Leah Page	B.S.	Chemistry	Southern University Baton Rouge	2007	Chemistry
Mandek Richardson	B.S.	Bioengineering	University of South Florida	2007	Bioengineering
O'Neil Shand	B.S.	Microbiology	University of Florida	2007	Microbiology & Immunology
Tanganyika Wilder	B.S.	Pre-Med	Florida A & M University	2004	Physiology & Biophysics

*Student enrolled in programs requiring completion of masters curriculum prior to doctoral study

Illinois LSAMP Bridge to the Doctorate Funding at a Glance

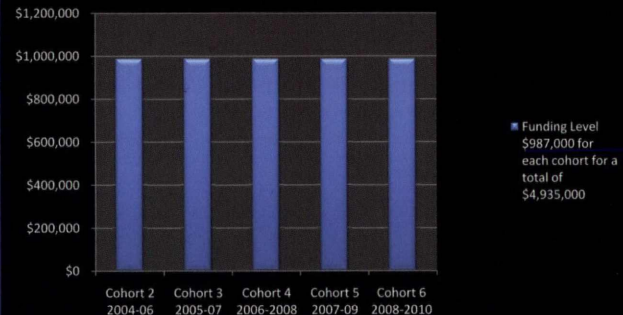
Illinois LSAMP Bridge to the Doctorate, UIC Cohort 6 Current Status

Students Enrolled in Doctoral Programs (09/10)

Name	Undergraduate	Undergraduate Major	Undergraduate Institution	Year of Degree	Doctoral Studies Major
Renaldo Evans	B.S.	Mathematics/Bioengineering	Bethune Cookman University	2008	Bioengineering
Diego Friere*	B.S.	Computer Engineering	University of Illinois at Chicago	2008	Computer Engineering
Crystal Guzman*	B.S.	Ecology and Engineering	University of Illinois at Chicago	2008	Ecology and Evolution
Crystalann Jones	B.S.	Chemistry	Illinois at Chicago Chicago State Univ.	2008	Chemistry
P. David McMullen	B.S.	Microbiology and Molecular Biology	Miami University (Ohio)	2008	Medical Scientist Training Program
Geovannie Ojeda	B.S.	Chemistry	University of Puerto Rico, Rio Piedras	2008	Chemistry
Torres M. Adam Palmer	B.S.	Psychology	Texas State University	2008	Neuroscience
Jan Raphael Saenu	B.S.	Electrical Engineering	University of Illinois at Chicago	2008	Electrical Engineering
Elliyana Sinkala	B.S.	Bioengineering	Vanderbilt University	2008	Bioengineering
Shalima Taylor	B.S.	Chemistry	Florida A&M University	2008	Pharmacology

*Student enrolled in programs requiring completion of masters curriculum prior to doctoral study

National Science Foundation Funding Illinois LSAMP Bridge to the Doctorate



Bridge to the Doctorate

For further information:

Visit our website at <http://www.uic.edu/depts/mcam/gradiv>

email: UICBD@uic.edu

voice: 312-355-1850 fax: 312-355-8221

Graduate Diversity Programs (MC 784)
University of Illinois at Chicago
College of Medicine
Suite 300, Clinical Sciences North
820 South Wood Street
Chicago, Illinois 60612