

---

# ILLINOIS LS-AMP

## Illinois LS-AMP Office Administration

Elnora D. Daniel, Ph.D.

**Principal Investigator**

Marian Wilson-Comer, Ph.D.

**Executive Director**

LeRoy Jones II, Ph.D.

**Director**

Yolanda McGehee Jordan

**Coordinator of Science Outreach**

Fay D. Edmond

**Office Manager**

<u>Institution</u>	<u>Coordinator's Phone</u>
Chicago State University	773-995-3296
DePaul University	773-325-7000x1854
Governors State University	708-534-4522
Harold Washington College	312-553-5795
Harry S Truman College	773-907-4719
Illinois Institute of Technology	312-567-3440
Illinois State University	309-438-2060
Kennedy-King College	773-602-5210
Malcolm X College	312-850-7482
Northeastern Illinois University	773-794-2549
Olive-Harvey College	773-291-6251
Richard J. Daley College	773-838-7648
South Suburban College	708-210-5716
Southern Illinois University-ED.	618-650-2541
St. Augustine College	773-878-8756x208
University of Illinois -Chicago	312-996-3055
Wilbur Wright College	773-481-8384

Illinois Louis Stokes Alliance For Minority Participation  
Chicago State University  
Williams Science Center, Room 101A  
9501 S. King Dr.  
Chicago, IL 60615

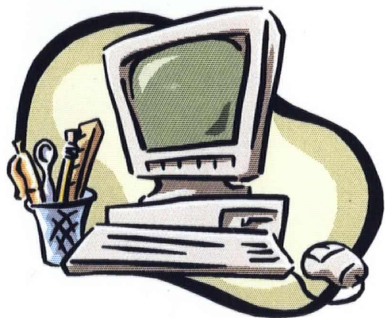


## ILLINOIS LOUIS STOKES ALLIANCE FOR MINORITY PARTICIPATION

Chicago State University  
Williams Science Center, Room 101A  
9501 S. King Drive  
Chicago, IL 60628  
phone: (773)995-3296 fax: (773) 995-2966  
email: [ilsamp@csu.edu](mailto:ilsamp@csu.edu)  
<http://www.csu.edu/ILSAMP>

Sponsored by  
National Science Foundation

# ILLINOIS LS-AMP



## WHAT IS THE ILLINOIS LS-AMP PROGRAM?

Formally known as the Chicago Alliance for Minority Participation (ChAMP), Illinois LS-AMP program is a consortium of 17 area community colleges, universities and research organizations participating in a collaborative effort to provide programs to improve the quality of science, mathematics, engineering, technology and science education (SMET) for underrepresented minority students. Each of these organizations has committed resources, including faculty and staff, research facilities, and technical assistance to insure that quality programs are available.

## WHAT IS THE GOAL OF THE ILLINOIS LS-AMP?

The goal of the program is to significantly increase the number of undergraduate and graduate degrees awarded to underrepresented minority students in SMET disciplines.

## WHAT ACTIVITIES DO THE ILLINOIS LS-AMP SPONSOR?

Illinois LS-AMP provides activities that are comprehensive, multidisciplinary, and focused on enhancing the scholarship of minority students. Considerable effort is expended to address transition points in a student's academic career. The transition points include high school to college, 2-year college to 4-year college, undergraduate study to graduate study, and academic study to careers in SMET. **Other activities include: hands-on research apprenticeships, scholarship programs, science conferences, facilitated study groups, faculty mentoring, professional development activities, peer**

**mentoring, summer bridge programs and internships.**

## WHAT ARE THE PARTICIPATING INSTITUTIONS?

Chicago State University, DePaul University, Governors State University, Harold Washington College, Harry S Truman College, Illinois Institute of Technology, Illinois State University, Kennedy-King College, Malcolm X College, Northeastern Illinois University, Olive-Harvey College, Richard J. Daley College, South Suburban Community College, Southern Illinois University-Edwardsville, St. Augustine College, the University of Illinois-Chicago, and Wilbur Wright College.

**Illinois LS-AMP's Goal**  
To increase the number of degrees awarded to underrepresented minority students in SMET disciplines.

## STANDARD ELIGIBILITY

All students benefit from LS-AMP activities. Those eligible for AMP research scholarships however are full time students who are citizens or permanent residents and are African American, Hispanic, American Indian, Alaskan Native or Native Pacific Islanders. Students are invited to apply based on academic performance.

**Illinois LS-AMP award decisions are made by the individual member universities and community colleges. Please apply for support through the Program Coordinators.**

## MINIMUM REQUIREMENTS

- ◆ Declared major in a SMET discipline.
- ◆ Good academic standing with a G.P.A. of at least a 3.0 (on a 4.0 scale).
- ◆ Recommendation of an instructor/teacher familiar with your work.

**For additional information, please contact the Illinois LS-AMP Administrative Office.**  
**Phone: (773) 995-3296**  
**E-mail: [ilsamp@csu.edu](mailto:ilsamp@csu.edu)**  
**WebSite: <http://www.csu.edu/ILSAMP>**