



**Louis Stokes Louisiana Alliance for Minority Participation
LS-LAMP Bridge to the Doctorate**

Planting Ideas

Cultivating Excellence

Blossoming Futures



**Louisiana State University
Bridge to the Doctorate Program**

Dr. Su-Seng Pang, Dr. Steven F. Watkins, and Dr. Isiah M. Warner

Office of Strategic Initiatives

240 Thomas Boyd Hall

Louisiana State University

Baton Rouge, LA 70803

Tel.: (225)578-5892

http://www.lsu.edu/sstem/LS-LAMP_BD_Brochure.pdf



BD is funded by the
National Science Foundation
#HRD-0503362



LS-LAMP Bridge to the Doctorate Program

Program Overview

This program awards twelve two-year Fellowships (\$30,000/yr plus tuition) to minority students entering Ph.D. programs in STEM disciplines. Two-year supplements (\$5,000/yr plus tuition) are awarded to beginning and continuing minority students in STEM Ph.D. programs as the budget permits. BD Fellows and BD Supplement awardees participate in regularly scheduled meetings to discuss mentoring, allocation of resources, and encouragement and support for participation at professional meetings. The program focuses on individualized faculty mentoring and coaching, links to research and professional opportunities, and enriched academic services and support.

To be eligible the applicant must:

- Have earned a degree (B.S. or M.S.) from any LS-LAMP institution in the United States;
- Be a U.S. citizen or permanent resident;
- Have a minimum undergraduate or graduate GPA of 3.0;
- Submit GRE scores as soon as possible;
- Be admitted to the LSU Graduate School and be **ACCEPTED** in a STEM department with the intention of working toward the Ph.D. degree.

Application Material and Deadline:

Please forward all application materials to the Office of Strategic Initiatives as soon as possible **(applications will be accepted until all positions are filled)**:

- Request a copy of the application package from the admitting department, including:
 - (i) graduate school application form;
 - (ii) undergraduate (and graduate, if applicable) transcripts;
 - (iii) statement of purpose;
 - (iv) two letters of recommendation;
 - (v) GRE scores.
- Copies of admission letters from the LSU Graduate School and the admitting department.
- A statement of previous participation in LS-LAMP activities (preferred but not required).
- An optional statement of other relevant activities (two page maximum).

Louis Stokes Louisiana Alliance for Minority Participation

LS-LAMP Bridge to the Doctorate Program

Management Team



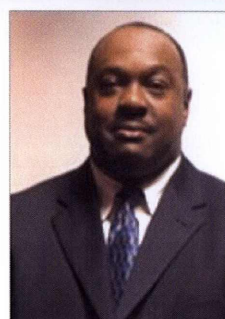
Su-Seng Pang, PhD.
PI, LS-LAMP/ BD



Steve Watkins, PhD
Co-PI, LS-LAMP/ BD



Isiah Warner, PhD.
Co-PI, LS-LAMP/ BD



Myron Peters
LS-LAMP / BD
Coordinator



Diola Bagayoko, PhD.
PI, LAMP / BD

**The Louis Stokes Louisiana Alliance for Minority Participation's Bridge to the Doctorate Program
Letter from the Directors**

Greetings:

The Louis Stokes Louisiana Alliance for Minority Participation (LS-LAMP) is pleased to have received continuous funding from the National Science Foundation (NSF(2005-07)-LAMP-PHASE III-BD) to support three Cohorts of Bridge to the Doctorate students.

The implementation of LS-LAMP-BD-1, BD-2, and BD-3 has been exemplary to date. Each Fellow has received \$30,000 yearly fellowship plus other benefits. All BD fellows are minority scholars and hold STEM BS/MS degrees from LS-LAMP institutions. The LS-LAMP-BD institution is Louisiana State University (LSU) in Baton Rouge, Louisiana. In addition to being fully supported financially, these fellows are in individualized mentoring relationships with their advisors in their respective departments. They have attended the monthly enhancement seminars of the BD program as well as additional discipline-specific research seminars in their units. Their academic and professional integration activities include research participation and attendance of local seminars and national, professional conferences. LSU has identified scholarship/fellowship funding for every BD-1 and BD-2 scholar beyond the two years of NSF support. It is also committed to funding the BD-3 scholars after the expiration of NSF funding.

The Ph.D. disciplines of these fellows are the STEM majors as defined by NSF. Twenty two of the fellows graduated from LS-LAMP institutions in Louisiana while the remaining are from other LS-LAMP institutions. The success of LS-LAMP-BD is guaranteed in part by its adoption and adaptation of the 10-Strand Systemic Mentoring Model to the needs of graduate students. The BD Fellows are totally immersed in this systemic mentoring environment. This program yields great dividends in terms of the production of high-quality under-represented minority Ph.D. degree-holders in STEM disciplines and whose goal is the pursuit of research-based careers in the professoriate and the public and private sectors.

The Louis Stokes Louisiana Alliance for Minority Participation is honored to be a part of this national program to increase the diversity profile of doctoral recipients in STEM programs.

Sincerely,

Diola Bagayoko, Su-Seng Pang, Steven F. Watkins, Isiah M. Warner

Recipients of Presidential Award for Excellence in Science, Mathematics and Engineering Mentoring

Louis Stokes Louisiana Alliance for Minority Participation

LS-LAMP Bridge to the Doctorate Program

Cohort 3



ADEYABEBA ABERA

BS, Electrical Engineering
Virginia Polytechnic Institute and
State University (2004)

Career Goals: PhD, Electrical Engineering

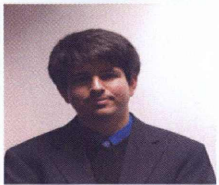


LEONARD MOORE, JR

BS, Chemistry
Grambling State University (2004)

BS, Physics
Grambling State University (2004)

Career Goals: PhD, Analytical Chemistry



LUIS ALVERGUE

BS, Electrical Engineering
McNeese State University (2004)

Career Goals: PhD, Electrical Engineering



MONICA SYLVAIN

BS, Chemical Engineering
Howard University (1990)

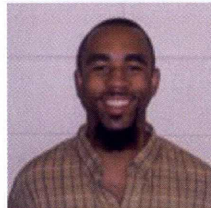
Career Goals: PhD, Analytical Chemistry



MARIETTA BOISDORE

BS, Biology
Southern University at New Orleans
(SUNO) (2005)

Career Goals: PhD, Biological Sciences



KREGG QUARLES

BS, Physics
Morehouse College (2005)

BS, Math
Morehouse College (2005)

Career Goals: PhD, Electrical Engineering



LEROY DAVIS

BS, Biological Sciences
Southern University and A&M College
(1996)

Career Goals: PhD, Biological Sciences



JEFFERY WEST

BS, Physics
Northwestern University (1995)
BS, Microbiology
Louisiana State University (1997)

Career Goals: PhD, Immunology



CHARISMA EDWARDS

BS, Electrical Engineering
Clark Atlanta University (2004)

Career Goals: PhD, Electrical Engineering



URSULA WHITE

BS, Biological Sciences
Louisiana State University and A&M (2004)

Career Goals: PhD, Biological Sciences



AYESHA HENDERSON

BS, Biological Sciences
Southern University and A&M College
(2004)

Career Goals: PhD, Cellular/Molecular
Biology



ROCHELLE WILLIAMS

BS, Physics
Spellman College (2003)

Career Goals: PhD, Engineering Material Science

Louis Stokes Louisiana Alliance for Minority Participation

LS-LAMP Bridge to the Doctorate Program

Cohort 4



SHANNON CHAMBERS

BS, Civil Engineering
Southern University and A&M College,
(2005)

MS, Civil Engineering
Clemson University (2006)

Career Goals: PhD, Civil Engineering



SHERRISSE KELLY

BS, Chemistry
Dillard University, (2004)

Career Goals: PhD, Food Science



STEPHANIE DANIELS

BS, Chemistry
Jackson State University (2004)

MS, Chemistry
Jackson State University (2006)

Career Goals: PhD, Chemistry



KENLEY MALVEAUX

BS, Electrical and Computer Engineering
Louisiana State University (2004)

MS, Electrical and Computer Engineering
Louisiana State University (2007)

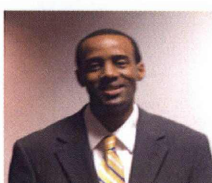
Career Goals: PhD, Electrical Engineering



STACIE GREGORY

BS, Physics
Spellman College (1994)

Career Goals: PhD, Chemistry



DAVID MURUNGI

BS, Political Science
Louisiana State University (1995)

Career Goals: PhD, Information System and
Decision Science (ISDS)



STEPHANIE GROSS

BS, Biological Science
Louisiana State University, (2006)

Career Goals: PhD, Biological Science



MARC PETERSON

BS, Chemistry
Southern University and A&M College,
(2005)

Career Goals: PhD, Organometallics



EMILY JACKSON

BS, Biological Science
Louisiana State University (2004)

Career Goals: PhD, Biochemistry



RAPHYEL ROSBY

BS, Biological Science
Louisiana State University, (2004)

Career Goals: PhD, Biological Science



TRACY JOHNSON-GAUFF

BS, Animal Science
Southern University and A&M
College , (2006)

Career Goals: PhD, Embryology/
Reproductive Physiology



LATOYA THOMAS

BS, Biological Science
Southern University and A&M College , (2003)

Career Goals: PhD, Biological Science

Louis Stokes Louisiana Alliance for Minority Participation

LS-LAMP Bridge to the Doctorate Program

Cohort 5



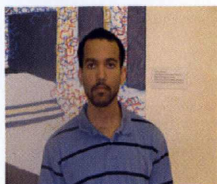
ALVIN ALLEN

BS, Computer Science
Southern University and A&M College
(1983)
Career Goals: PhD, Computer
Engineering



KRYSTAL FONTENOT

BS, Chemistry
Southern University and A&M College (2004)
Career Goals: PhD, Chemistry



MARCUS BENJAMIN

BS, Chemistry
Jackson State University (2005)
Career Goals: PhD, Chemistry



WAKEEL IDEWU

BS, Civil Engineering
University of Louisiana -Lafayette (2004)
Career Goals: PhD, Civil Engineering



JODI BOUTTE

BS, Kinesiology
Louisiana State University and A&M
College (2005)
Career Goals: PhD, Engineering Science



AMBER MATHEWS

BS, Biological Science
Louisiana State University (2006)
Career Goals: PhD, Biological Science



MARSHA COLE

BS, Chemistry
Grambling State University (2007)
Career Goals: PhD, Chemistry



AMY POLLARD

BS, Chemistry
University of Tennessee (2004)
Career Goals: PhD, Analytical Chemistry



FAREED DAWAN

BS, Computer and Electrical Engineering
Louisiana State University (2002)
Career Goals: PhD, Mechanical
Engineering



KANDACE THOMAS

BS, Biological Science
Southern University and A&M College (2005)
Career Goals: PhD, Biological Science



CURTISTINE DEERE

BS, Chemistry
Mississippi Valley State University
(2005)
Career Goals: PhD, Chemistry



ASHLEIGH WRIGHT

BS, Chemistry
Wofford College (2004)
Career Goals: PhD, Chemistry

Louis Stokes Louisiana Alliance for Minority Participation

LS-LAMP Bridge to the Doctorate Program

Cohort 6



DIANE ALVAREZ
BS, Physics
Florida International University (2008)
Career Goals:
PhD, Chemistry



JANA R. ROBINS
BS, Biological Science
Southern University and A&M College
(2007)

Career Goals: PhD, Biological Science



KATRINA N. BATTLE
BS, Chemistry
Jackson State University (2008)
Career Goals: PhD, Chemistry



LEKITH TERRELL
BS, Chemical Engineering
Mississippi Valley State University
(2005)
Career Goals: PhD, Chemical
Engineering



RAVEN R. DORA
BS, Computer Science
Southern University and A&M College
(2000)

Career Goals: PhD, Computer Science



Cornelius Toole
BS, Computer Science
Southern University and A&M College
(2005)
Career Goals: PhD, Computer Science
Engineering



DERRICK D. GOSS
BS, Mechanical Engineering
Louisiana State University and A&M
College (2005)

Career Goals: PhD, Mechanical
Engineering



BRANDY M. TYSON
BS, Chemistry
Southern University and A&M College (2001)

Career Goals: PhD, Chemistry



TANIA HICKS
BS, Biological Science
Southern University and A&M
College (2005)

Career Goals: PhD, Biological Science



URBAN WIGGINS
BS, Mathematics
Southern University and A&M College (1994)
Career Goals: PhD, Computer Science



Brandy Snowden
BS, Chemistry
Southern University and A&M College
(2007)

Career Goals: PhD, Analytical Chemistry



BRONDON YOUNG
BS, Chemistry
Bowling Green (2004)

Career Goals: PhD, Analytical Chemistry

Louisiana State University Bridge to the Doctorate Program

Dr. Su-Seng Pang, Dr. Steven F. Watkins, and Dr. Isiah I. Warner
Office of Strategic Initiatives
240 Thomas Boyd Hall
Louisiana State University
Baton Rouge, LA 70803
(225)578-5892

http://www.lsu.edu/sstem/LS-LAMP_BD_Brochure.pdf

Contact Information:

Please direct all inquires to the LSU/BD Coordinators:

Dr. Su-Seng Pang
(225)578-5892
mepang@me.lsu.edu

Dr. Steven F. Watkins
(225)578-3359
swatkins@lsu.edu

Myron Peters
(225)578-5892
mpete13@lsu.edu

