

LS&MP Louis Stokes Alliance
for Minority Participation
THE TEXAS A&M UNIVERSITY SYSTEM

Bridge to the Doctorate **Program 2009**



Howdy!

The Texas A&M University System Louis Stokes Alliance for Minority Participation (TAMUS LSAMP) is privileged to have received yet another funding award from the National Science Foundation, to support our fifth cohort of Bridge to the Doctorate (BTD) fellows.



The TAMUS LSAMP Alliance consists of three institutions, Texas A&M University serving as the lead institution, Texas A&M University – Corpus Christi and Prairie View A&M University. With graduate school success in mind, the Bridge to the Doctorate Program is aimed at increasing the quality and quantity of students interested in, academically qualified for, and matriculating into programs of doctoral studies in science, technology, engineering and mathematics (STEM) disciplines.

The TAMUS LSAMP BTD Program has served over 60 students through five cohorts. BTD Cohort I, hosted at Texas A&M University, began with 10 students and 100% matriculation into doctoral programs. BTD Cohort II, also hosted at Texas A&M University, was comprised of 12 students where 50% of the fellows entered doctoral programs. BTD Cohort III was hosted at Prairie View A&M University, where 16% of the 12 fellows matriculated into doctoral programs upon completion of their masters' program. Texas A&M University hosted BTD Cohort IV, where 50% of the 12 fellows entered doctoral programs with the remaining students in their final phase of their masters' programs. BTD Cohort V is currently underway at Texas A&M University, where the 12 fellows have exhibited outstanding progress in their graduate programs.

The Texas A&M University Louis Stokes Alliance for Minority Participation is building bridges to the doctorate and furthering careers and opportunities in STEM fields. We look forward to helping you make your dreams a reality.

Sincerely,

Karen Butler-Purry, Ph.D.

TAMUS LSAMP, Director and Co-PI

What is the Bridge to the Doctorate Program?

The **Bridge to the Doctorate (BTD)** fellowship program is an extension of the LSAMP, funded by the National Science Foundation (NSF). Designed to aid Master's level students in garnering the resources and information necessary to assist them in successfully matriculating into a Doctoral program, the BTD fellowship seeks to support students academically and professionally in achieving an advanced degree.

The Goal...

To increase the quality and quantity of underrepresented minority students successfully completing
STEM graduate degree programs.



Jacob stands with his two mentors,
Dr. Kelly Burmbelow (left) and Dr. Seth Guikema

"The TAMUS-LSAMP Bridge to Doctorate Fellowship program is like no other. The fellowship allows me to focus solely on academics and research. It's carrying me through my Master's degree work to the point where I am now in a position that the idea of pursuing a Ph.D. is actually possible."

Jacob Torres, BTD IV

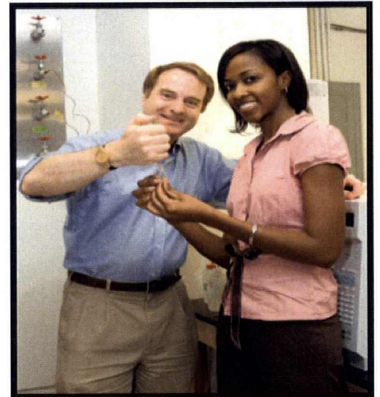
Benefits

Among the benefits for BTD Fellows are:

- Funding for initial two years of graduate study, including a monthly stipend, graduate tuition/fees, and health insurance benefits
- A series of seminars and workshops aimed to help the BTD Fellow to thrive and succeed in their graduate program, and eventual matriculation into a Ph.D. program
- Mentoring assistance
- Academic enrichment
- Travel to conferences

"I have received so much from being a part of LSAMP Program. I really gained a lot from the other students in the program who could identify with the day-to-day struggles of grad school."

Maxine Jones, BTD I



Maxine performs research for biomass conversion energy with her mentor, Dr. Mark Holtzapple.

Qualifications

- B.S. degree in a STEM major at an LSAMP institution
- Minimum GPA of 3.0
- Acceptance as a first time graduate student into a Master's or Ph.D. Program at the TAMUS BTD hosting university
- U.S. Citizen or Permanent Resident

Professional Development **Activities**

A series of seminars and workshops are designed to assist BTM Fellows in developing their readiness and increase eagerness to complete STEM doctoral degrees and by preparing them to take their places as leaders in interdisciplinary research and in academia. Below is a snapshot of seminars and workshops held for BTM Fellows.

Workshops/Seminars

How to be successful in Graduate School

Description: This seminar focuses on the importance of reading, interacting with people, making choices to enhance value to others, and thinking positive about the students' chosen path.

Getting the Research Done

Description: This seminar covers the importance of staying energized, staying focused, and developing good habits throughout the course of graduate school and working on research.

How Research is Conceived and Developed

Description: This seminar covers choosing a research question relevant to the scientific community and integrating the scientific method into the research project developed to answer the question.

High Stakes Exams

Topics: What is the difference between qualifying and preliminary exams? Who is required to take these exams? Purpose for exam? Who administers these exams? Are there standard formats for the 2 exams? How to prepare for exams?

Publishing your Research

Description: This seminar covers the significance of publishing research in scholarly journals and conference proceedings. Overall approach to developing papers is covered as well as the process of submission.

The Professoriate as a Career Choice

Description: What is it like to be a faculty member? Service? Funding? Teaching? Vacation? Family Life?

Personal Finance: Living Within your Means

Description: This seminar covers the importance of personal finance for life in graduate school and beyond. Topics covered include budgeting software, credit scores, saving and investing, etc.

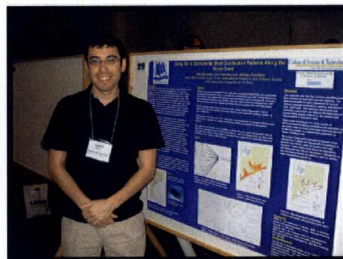
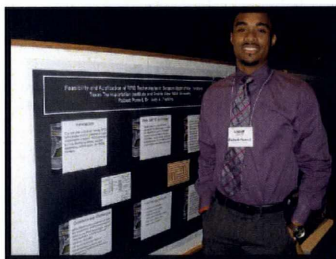


End of the year Symposium

At the end of each academic year, the BTM fellows give presentations on their research to their fellow BTM peers and the LSAMP undergraduate research students. It provides an opportunity for the BTM fellows to hone their presentation skills as well as gives their peers insight into state of the art research being conducted.

Annual TAMUS LSAMP Symposium

The Annual TAMUS LSAMP Symposium is a mini conference that consists of several workshops, a poster session for TAMUS LSAMP and BTD students to make oral presentations and/or participate in poster presentations based on professor-guided research, and several keynote speakers who motivate and show the students that it is possible to succeed as an URM in STEM fields.



Above are pictures from the 5th Annual TAMUS LSAMP Symposium held at Texas A&M University—Corpus Christi on February 20, 2009. A highlight of the symposium was the banquet held at the Texas State Aquarium.

Shannon Walton



Ph.D. Candidate
Interdisciplinary Studies

MS - Safety Engineering
Texas A&M University

BS - Industrial Engineering
Texas A&M University

Maxine Jones



Ph.D.
Chemical Engineering

BS - Chemical Engineering
Mississippi State University

Douglas Rodriguez



Ph.D. Candidate
Mechanical Engineering

BS - Mechanical Engineering
Texas A&M University

Deborah Roman Santos



Ph.D.
Water Resources Engineering

MS - Natural Science
University of Puerto Rico

BS - Natural Science
University of Puerto Rico

Jessica Houston



Ph.D. Candidate
Chemical Engineering

MS - Chemical Engineering
Texas A&M University

BS - Chemical Engineering
New Mexico State University

Erica Reese Bruce



Ph.D.
Civil Engineering

MS - Civil Engineering
Texas A&M University

BS - Civil Engineering
Texas A&M University

Samuel Rodriguez



Ph.D. Candidate
Computer Engineering

BS - Computer Engineering
Texas A&M University

Migvia del C. Vidal



Ph.D. Candidate
Chemical Engineering

BS - Chemical Engineering
University of Puerto Rico

Juan Juarez



Ph.D. Candidate
Electrical Engineering

MS - Electrical Engineering
Texas A&M University

BS - Electrical Engineering
Texas A&M University

Julianna Camacho

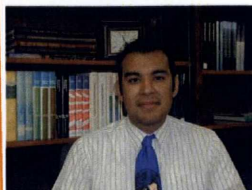


Ph.D. Candidate
Environmental Engineering

MS - Environmental Engineering
Texas A&M University

BS - Chemical Engineering
University of Puerto Rico

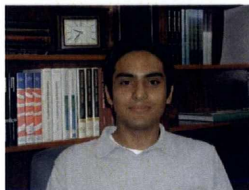
Aldo Gardea



MS Candidate
Entomology

BS - Entomology
Texas A&M University

Alfredo J. Hernandez



Ph.D. Candidate
Biochemistry

BS - Biochemistry
University of Texas-Pan American

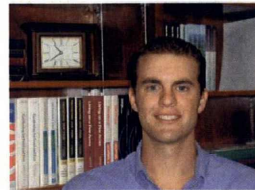
Varrian D. Hall



MS
Computer Science

BS - Electrical Engineering
Mississippi State University

Dominique Elijah Watts



MS
Wildlife Science

BS - Wildlife Science
New Mexico State University

Javier Ramirez III



MS
Agriculture, Physiology of
Reproduction

BS - Agriculture, Physiology of
Reproduction
*Texas A&M University-
Kingsville*

Jennifer Owens



Ph.D.
Applied Mathematics

BS - Applied Mathematics
University of Texas, Austin

Kimberly Jones Paulhill



Ph.D. Candidate
Nutritional Sciences

BS - Nutritional Sciences
Texas A&M University

Lindsay Nicole Birt



Ph.D. Candidate
Agricultural and Biological
Engineering
Purdue University

MS - Biological and
Agricultural Engineering
BS - Agricultural Engineering
Texas A&M University

Mayra I. Mendez Pinero



Ph.D. Candidate
Industrial
Engineering

BS - Industrial Engineering
University of Puerto Rico

Takesha Y. Henderson



MS
Entomology

BS - Entomology
Texas A&M University

Vanessa Alyss Chapa



Ph.D.
Analytical Chemistry

BS - Chemistry
Texas A&M University

Shantel Higgins



MS
Electrical Engineering

BS - Electrical Engineering
Vanderbilt University

Tumeia Ford



MS
Mechanical Engineering

BS - Mechanical Engineering
Prairie View A&M University

Ebony Towns



MS
Mechanical Engineering

BS - Mechanical Engineering
Prairie View A&M University

Jolsone Augustin



MS Candidate
Computer Science

BS - Computer Science
University of Maryland

Jerrad Deason



MS Candidate
Chemical Engineering

BS - Chemical Engineering
Prairie View A&M University

Henry Lee III



MS
Electrical Engineering

BS - Electrical Engineering
Prairie View A&M University

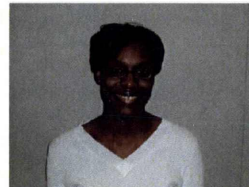
Ebony Hawkins



MS
Mechanical Engineering

BS - Mechanical Engineering
Prairie View A&M University

Lamesha Johnson



Ph.D. Candidate
Mathematics
Rice University

BS, MS - Mathematics
Prairie View A&M University

Dana LeDoux



MS Candidate
Mathematics

BS - Mathematics
Prairie View A&M University

Crystal Robinson



MS Candidate
Electrical Engineering

BS - Electrical Engineering
Prairie View A&M University

Sharrone Marshall



MS Candidate
Electrical Engineering

BS - Electrical Engineering
Prairie View A&M University

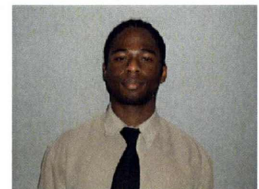
Richard Tate



MS Candidate
Electrical Engineering

BS - Electrical Engineering
Prairie View A&M University

Randy Wilkins



Ph.D. Candidate
Mechanical Engineering
Texas A&M University

MS - Mechanical Engineering
BS - Mechanical Engineering
Prairie View A&M University

LaToya Anderson



MS
Industrial Engineering

BS - Applied Math Sciences
Texas A&M University

Andron Creary



MS
Mechanical Engineering

BS - Mechanical Engineering
Florida State University

Chinedu Ezeka



MS Candidate
Mechanical Engineering

BS - Mechanical Engineering
Prairie View A&M University

John Flores-McLaughlin



Ph.D. Candidate
Nuclear Engineering

BS - Nuclear Engineering
Texas A&M University

Eyleen Hernandez



MS
Industrial Engineering

BS - Industrial Engineering
University of Florida

Justin Jackson



Ph.D. Candidate
Aerospace Engineering
Georgia Tech

MS - Aerospace Engineering
Texas A&M University

BS - Maritime Systems Engineering
Texas A&M University - Galveston

Maya Johnson



Ph.D. Candidate
Mathematics

BS - Mathematics
Lincoln University

Marcus Lopez



MS Candidate
Electrical Engineering

BS - Electrical Engineering
University of Puerto Rico, Mayaguez

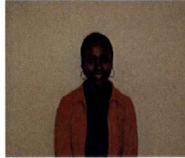
Ivory Mayhorn III



ME
Computer Engineering

BS - Computer Science
Prairie View A&M University

Jean Njoroge



Ph.D. Candidate
Material Science & Engineering

BS - Chemical Engineering
Prairie View A&M University

Aracely Rocha



Ph.D. Candidate -
Mechanical Engineering

BS - Mechanical Engineering
University of Texas Pan America

Jacob Torres



Ph.D. Candidate
Civil Engineering
John Hopkins University

MS - Civil Engineering
BS - Civil Engineering
Texas A&M University

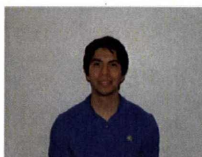
Kevin Gagnon



Ph.D. Candidate
Chemistry

BS - Chemistry
Worcester Polytechnic Institute

Roberto Gamez



Ph.D. Candidate
Chemistry

BS - Chemistry
University of Texas Pan American

Tanya Garcia



Ph.D. Candidate
Statistics

BS - Mathematics
University of California, Irvine

Casie Hilliard



Ph.D. Candidate
Chemistry

BS - Chemistry
University of Florida

Rafael Huacuja



Ph.D. Candidate
Chemistry

BS - Chemistry
Cornell University

Tiffany Kinnibrugh



Ph.D. Candidate
Chemistry

BS - Mathematics
New Mexico Highlands University

Roy Montalvo



Ph.D. Candidate
Physics

BS - Physics/Mathematics
Stony Brook University

Michelle Myers



Ph.D. Candidate
Electrical Engineering

BS - Physics and Astronomy
Ohio State University

Jorge Restrepo



Ph.D. Candidate
Chemistry

BS - Chemistry
Florida International University

Jennifer Rolfes



Ph.D. Candidate
Statistics

BS - Mathematics
University of Nevada Las Vegas

Karen Triff



Ph.D. Candidate
Biology

BS - Biological Sciences
Florida International University

Texas A&M University

TAMUS LSAMP Central Office
218 Wisenbaker Engineering Research Center (WERC)
3405 TAMU
College Station, TX 77843-3405
(979) 845-0778
(979) 862-1267

Dr. Karan L. Watson
Principal Investigator

Dr. Karen Butler-Purry
Co-Principal Investigator / TAMUS LSAMP Director

Mrs. Shannon Walton
TAMUS LSAMP Associate Director / BTD Coordinator

Prairie View A&M University

College of Engineering
SR Collins Building, Room 340
L. W. Martin Street
P.O. Box 519, MS 2502
Prairie View, TX 77446
(936) 261-9896
(936) 261-9868

Dr. Kendal Harris
Co-Principal Investigator / BTD Coordinator

Texas A&M University – Corpus Christi

College of Science & Technology
6300 Ocean Drive, Unit 5824
Corpus Christi, TX 78412-5824
(361) 825-3622
(361) 825-2795

Dr. Frank Pezold
Co-Principal Investigator

Dr. John Fernandez
TAMU-CC LSAMP Coordinator

Mrs. Liza Wisner
TAMU-CC LSAMP Assistant

