



Indigenous Math and Science Institute

Our goal is to provide an all-inclusive effort to promote Native American achievement at all levels of science, technology, engineering, and mathematics education.

Salish Kootenai College
P.O. Box 70
52000 Highway 93
Pablo, Montana 59855



Contact Information

IMSI

P.O. Box 70
52000 Highway 93
Pablo, MT 59855
Phone (406) 275-4800
Fax (406) 275-4801

IMSI Director

Zetra Wheeler
Phone (406) 275-4998
Email zetra_wheeler@skc.edu

K-12 Programs Director

Roger McClure
Phone (406) 275-4713
Email roger_mcclure@skc.edu

Internet Information

Website

<http://www.skc.edu> (programs link)
<http://www.anlsamp.org>
<http://www.skc-rsi.org>

Listserv

<http://listserv.skc.edu/cgi-bin/lyris.pl?site=amplistserver>

Any opinions, findings and conclusions or recommendations expressed in this material are those of the authors(s) and do not necessarily reflect the views of the National Science Foundation (NSF). This material is based upon work supported by NSF under Grant No. HRD-0000305.



Indigenous Math & Science Institute
P.O. Box 70
52000 Highway 93
Pablo, MT 59855

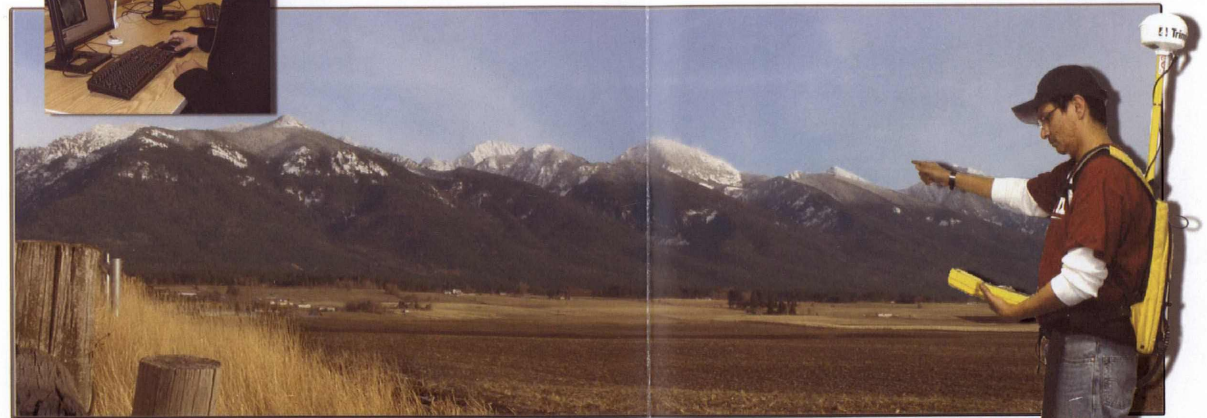
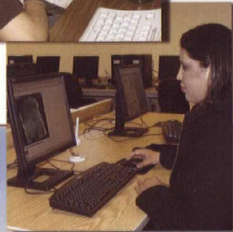
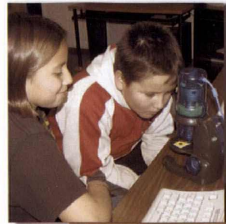
The Indigenous Math and Science Institute (IMSI) was formed in December of 2001. We are located at the Salish Kootenai College (SKC) in Pablo Montana. With the expansion in focus and funding sources, SKC recognized the need to form a department inclusive of all its activities.



Salish Kootenai College Campus

There are two primary divisions within the IMSI department. The first is our preK-12 division, which works with schools throughout the Confederated Salish and Kootenai Indian Reservation. The second is our higher education division whose goal is to increase the quality of math and science education in collaboration with tribal colleges and universities and partner state and private institutions.

Our preK-12 programs include the NSF funded Rural Systemic Initiative (RSI) that is designed to implement a comprehensive, sustainable, adaptable system-wide reform of science, mathematics and technology instruction on the Flathead Reservation. There are other projects like the NASA funded Native Earth Science Curriculum Projects (NESCP). It is a collaborative effort to develop and disseminate culturally competent curriculum specific to NASA's Earth Systems Science. These are a few examples of the many important activities being developed through IMSI.



Mission Mountains

Our premier college level program, and founding program of the department is the All Nations Louis Stokes Alliance for Minority Participation (ANLSAMP). This is funded by the National Science Foundation (NSF) and serves the 32 AIHEC Tribal Colleges and Universities (TCUs) and 20 state and private institutions of higher education in a twelve state region. The goal is to increase the quality and quantity of American Indians receiving baccalaureate degrees and graduate degrees in science, technology, engineering and mathematics (STEM).