



EHR Weekly Brief

Inspiring *STEM Learning*

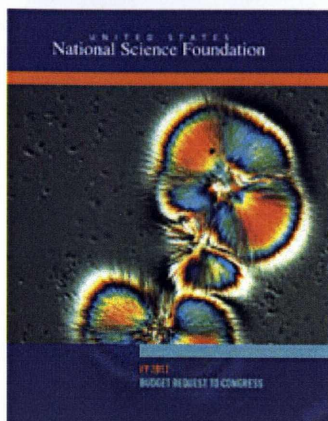
March 18, 2011

Directorate for
Education and
Human Resources

National Science
Foundation
4201 Wilson Blvd.
Arlington, VA 22230
(703)-292-8600
www.nsf.gov

Inside this issue:

The EHR FY 2012 Budget	1
STEM Education : A Presidential Priority	2
New and Expanded Directions	3
Changes in FY 2012	3
OneNSF	4

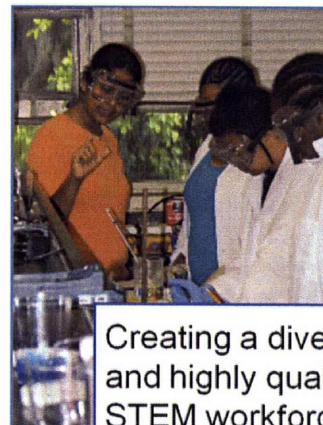


NSF FY 2012 Budget Request

Directorate for Education and Human Resources



Catalyzing K-12
STEM student and
teacher learning,
with more dramatic
results



Creating a diverse
and highly qualified
STEM workforce,
at a more rapid
pace



Improving evaluation
methods, designs, and
approaches to ensure
strategic investment

The Mission of EHR is to
achieve excellence in U.S.
STEM education at all levels
and in all settings to
support the development of a
diverse and well-prepared
workforce and
well-informed citizenry.



STEM Education: A Presidential Priority



"... countries that out-educate us today will out-compete us tomorrow. And so we want every citizen to have the skills and training they need in a global economy – from the day that you're born through whatever career you may choose."

*President Obama, Carnegie Mellon University,
June 2, 2010*

FY 2012 Budget Request			
Division	FY 12 Request (millions)	Increase over 2010 enacted level (millions)	Increase over 2010 enacted level
DRL	\$264.09	\$4.09	1.6%
DUE	\$295.42	\$3.01	1.0%
DGE	\$191.73	\$10.29	5.7%
HRD	\$159.96	\$21.05	15.2%
Total	\$911.2	\$38.44	4.4 %

New and Expanded Directions for FY 2012

Widening Implementation and Demonstration of Evidence-Based Reform (WIDER)

Moving evidence-based undergraduate STEM education practices to scale

Teacher Learning for the Future (TLF)

Designing, studying, and promoting pathways for STEM teacher learning through research focusing on the needs of the next generation of STEM teachers

Community Colleges and Two-Year Institutions

Expanding outreach to engage community colleges in significant roles across EHR programs

Project and Program Evaluation (PPE)

Conducting evaluation, synthesis, and comparison studies to increase knowledge of effective practices in STEM learning and education, and program evaluation

Transforming Broadening Participation through STEM (TBPS)

Sparking innovative solutions for broadening participation in STEM at the undergraduate level in anticipation of tomorrow's changing demographics, including increased engagement with HSIs

Changes

National STEM Distributed Learning Program (NSDL)

No new competitions in FY 12 or subsequently, ideas move forward in Cyberlearning, MSP, DRK-12, ITEST, CIF21, and other programs

Graduate STEM Fellows in K-12 Education (GK-12)

No new competitions in FY12 or subsequently, fold learnings into IGERT, MSP, CRPA, and others

Research in Disabilities Education (RDE) & Research on Gender in Science and Engineering (GSE)

Joining with Research and Evaluation on Education in Science and Engineering (REESE)

Broadening Participation at the Core

New conceptual framing in Division of Human Resource Development to include HBCU-UP, TCUP, LSAMP, and TBPS

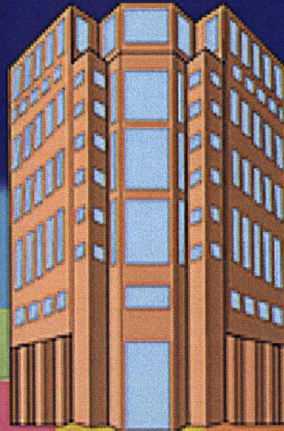
OneNSF



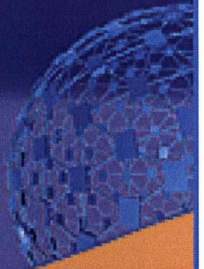
catalyze human capital development



improve organizational efficiency



create networks and infrastructure for the nation

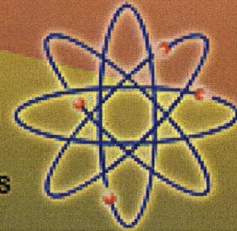


spark greater innovation and opportunity for scientific discoveries



address multidisciplinary challenges of national/global significance

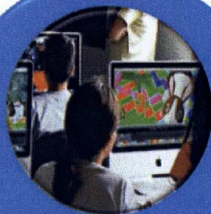
support fundamental research in all disciplines



OneEHR



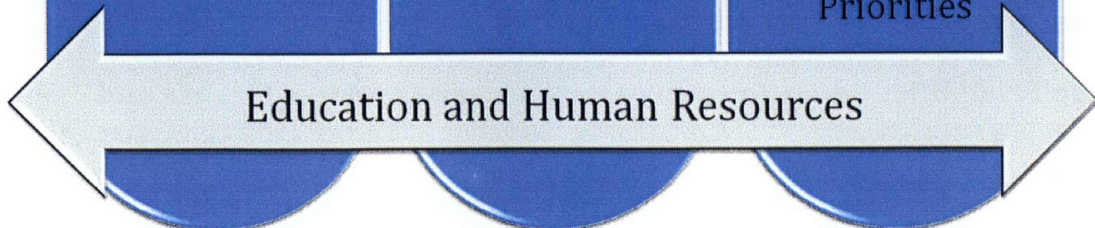
Building Blocks



Innovation



Breakthroughs for National Priorities



Education and Human Resources