

# Premiere of LSAMP Videos

**A Call to Action  
LSAMP Model for Broadening Participation in STEM**

**2013 Louis Stokes Midwest Center of Excellence Conference  
Indianapolis, Indiana; October 21, 2013**

**Juanita Barrena, Ph.D.  
California State University-LSAMP**





Image adapted from: Dawn, D. *Marquee, HR* [Clipart].  
Clkr.com, permission to reprint by Clkr.com  
<http://www.clker.com/clipart-326811.html>.

# Video Descriptions

## *Louis Stokes Alliances for Minority Participation: Aiming High and Making a Difference*

**Goal:** Document and disseminate information about best practices employed by the LSAMP program.

**Content:** LSAMP history, theoretical underpinnings, programmatic structure, and outcomes.

**Audience:** University leaders, STEM educators, policy makers, and others who are positioned to promote and support efforts to meet the nation's need for a diverse and able STEM workforce.

**Duration:** 30 minutes.





# Video Descriptions

## *Becoming a Scientist or Engineer: Your Pathway to the Future with LSAMP*

**Goal:** To motivate students, particularly students from underrepresented groups, to pursue majors and careers in STEM, and encourage them to participate in LSAMP or other programs that provide support and enrichment experiences.

**Content:** Current LSAMP students and alumni talk about their STEM experiences and the benefits of participating in an LSAMP program.

**Audience:** High School and lower division College students, particularly students from underrepresented groups.

**Duration:** 5 minutes.



# Main Video Outline

## 1. The LSAMP Program/National Scope

- a. NSF Context/Program History
- b. Need for broadening participation
- c. Specific LSAMP Goals
- d. LSAMP Portfolio (geographical spread, number and types of Alliances, number and types of institutions)

## 2. The LSAMP Model

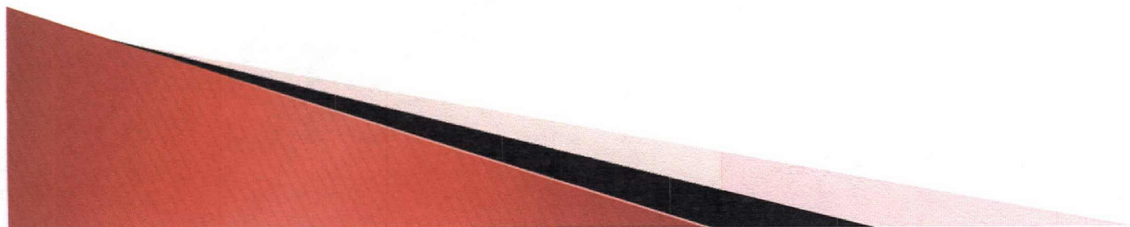
- a. Model Elements (theoretical underpinnings)
- b. Strategies and Best Practices

## 3. Program Impact

- a. On individual students
  - b. On broadening participation (aggregate data)
  - c. On institutions (institutional transformation)
  - d. On STEM research and education
- 

# Challenges

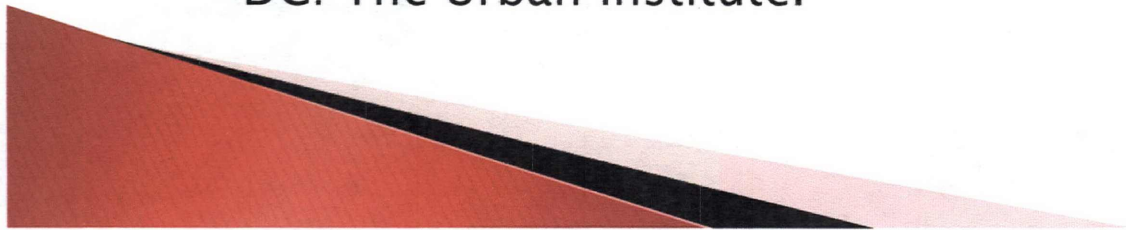
1. Identifying examples that illustrate both the diversity of LSAMP programs and characteristics that are commonly shared.
2. Telling the story in a compelling way.
3. Getting it all into a video that is short enough for the intended audiences.





# “Materials and Methods”

1. Questionnaires from LSAMP programs and Impact Reports
2. Interviews
  - a. with key individuals at the National level
  - b. with administrators, faculty, staff and students from five different Alliances
  - c. with alumni from three additional Alliances
3. Lots of “b-roll” and still images of students
4. Reference for the LSAMP Model and Evaluation Data  
Clewell, Beatriz C, Clemencia Cosentino de Cohen, Lisa Tsui, and Nicole Deterding. 2006. *Revitalizing the Nation's Talent Pool in STEM: Science, Technology, Engineering and Math*. Washington, DC: The Urban Institute.



# Video Formats and Links

## **DVD**

Includes the two video programs (also in closed caption) plus an extended credits list.

## **YouTube**

*LSAMP: Aiming High and Making a Difference* is at:

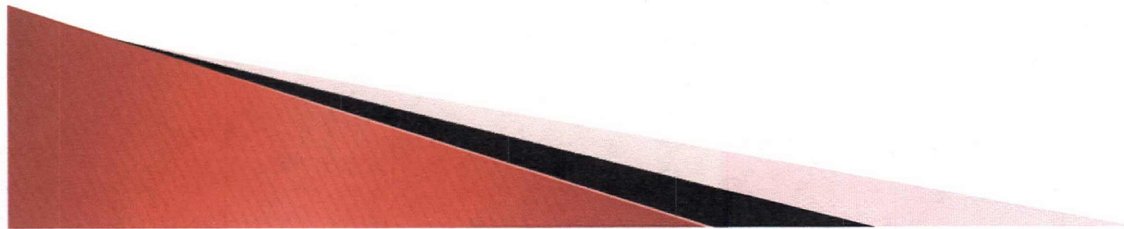
➤ <http://youtu.be/53y7QJoH7Co>

*Becoming a Scientist or Engineer: Your Pathway to the Future with LSAMP* is at:

➤ [http://youtu.be/Li90yoX\\_dGA](http://youtu.be/Li90yoX_dGA)

## **LSMCE Link**

➤ <http://lsmce.org/videos/>





# Acknowledgments

## **The National Science Foundation**

Production of the videos was supported by the National Science Foundation under Cooperative Agreement No. HRD-0802628. Any opinions, findings, and conclusions or recommendations expressed in this material are those of the authors and do not necessarily reflect the views of the National Science Foundation.

## **Academic Technology and Creative Services Unit at California State University, Sacramento**

**MICHAELINE J. VEDEN**

Executive Producer and Assistant Director

**KEITH ROGERS**

Producer/Director/Writer



# Acknowledgments

## **Administrators, Faculty, Staff, and Students at the Visited Alliances**

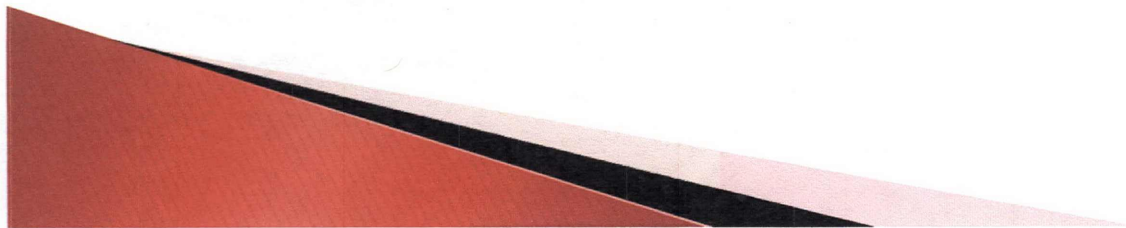
**California Alliance for Minority Participation (CAMP)**

**California State University Louis Stokes Alliance for  
Minority Participation (CSU-LSAMP)**

**North Star STEM Alliance (NSSA)**

**University of Texas System Louis Stokes Alliance for  
Minority Participation (UT System LSAMP)**

**Washington, Baltimore, Hampton Roads Alliance for  
Minority Participation (WBHR-AMP)**





# Acknowledgments

## **Primary Reference for the LSAMP Model and Evaluation Data**

**Clewell, Beatriz C, Clemencia Cosentino de Cohen, Lisa Tsui, and Nicole Deterding. 2006. *Revitalizing the Nation's Talent Pool in STEM: Science, Technology, Engineering and Math*. Washington, DC: The Urban Institute.**

## **Additional Contributors**

**The Honorable Louis Stokes and Ms. Shelly Hammond-Stokes**

**Congresswoman Eddie Bernice Johnson and her staff**

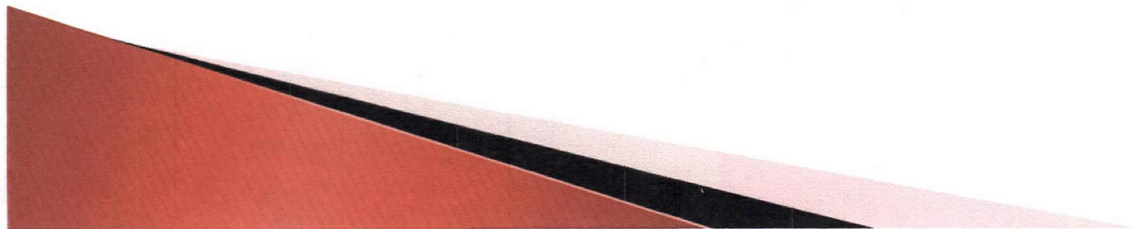
**NSF-LSAMP NAPIRE Program for video footage**

**All of the Alliances that contributed photos and program information for production of the videos.**



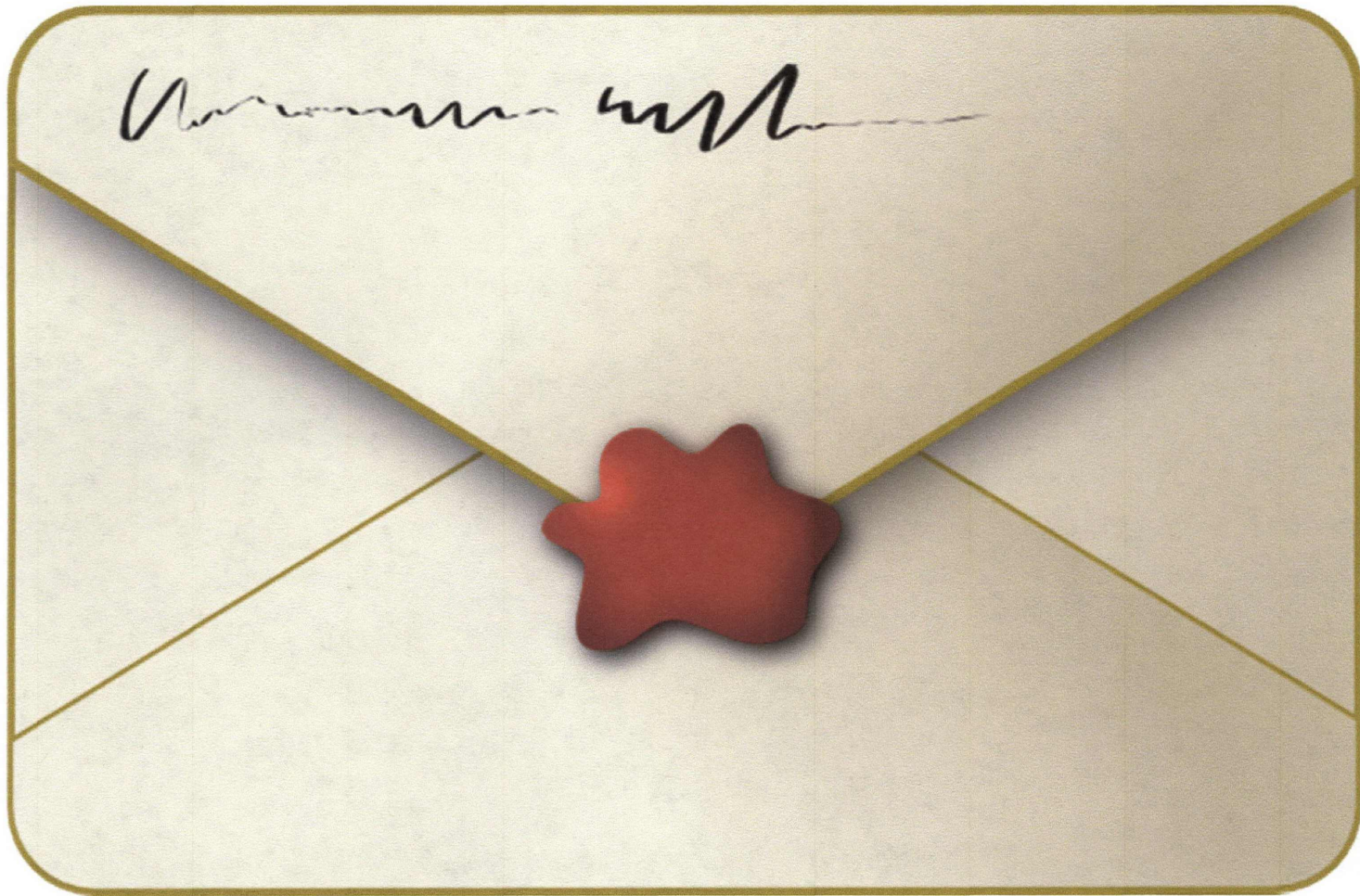
# Acknowledgments

**Best Actor in a Leading Role  
in  
Promoting the LSAMP Model  
for  
Broadening Participation in STEM**



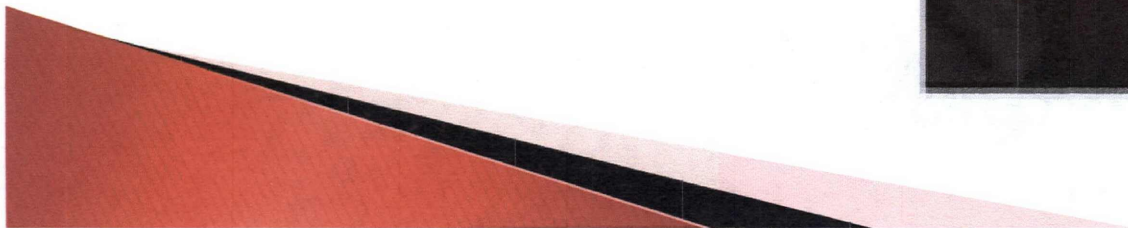


# May I Have the Envelope, Please!

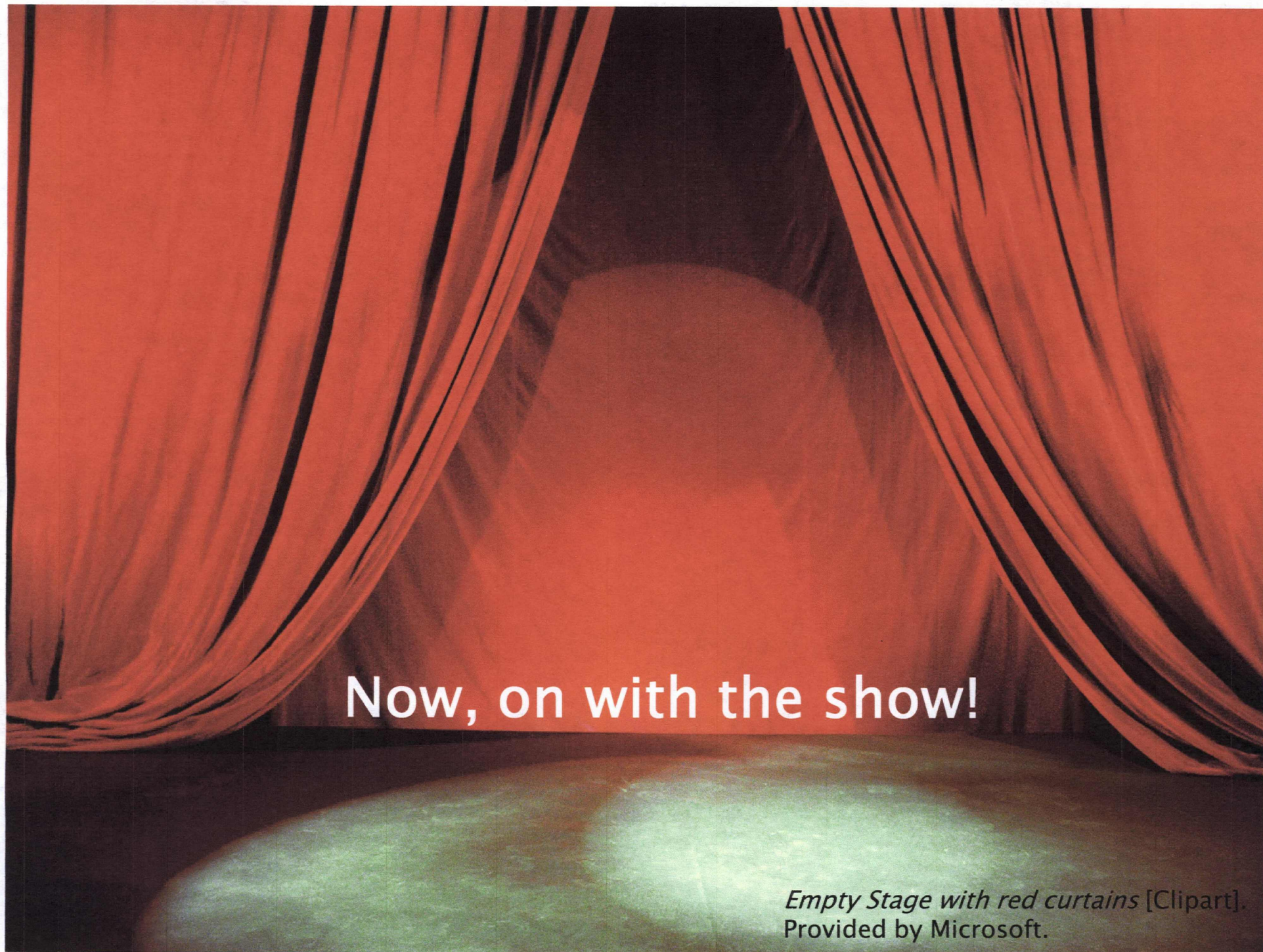


OCAL. *Sealed Envelope* [Clipart].  
Clkr.com, permission to reprint by Clkr.com  
<http://www.clker.com/clipart-14580.html>

**And,  
the winner is. . .**







Now, on with the show!

*Empty Stage with red curtains* [Clipart].  
Provided by Microsoft.