

The National Science Foundation

Louis Stokes Alliances for Minority Participation

LSAMP

Retired Congressman Louis Stokes
Returns to Washington, D.C.



2007

**NATIONAL
SCIENCE FOUNDATION**



Dr. Arden L. Bement, Jr.
Director
National Science Foundation
(703) 292-8000
abement@nsf.gov



Dr. Cora Marrett
Assistant Director
Directorate for Education and
Human Resources
(703) 292-8600
cmarrett@nsf.gov



Dr. Victor Santiago
Deputy Division Director
Division of Human Resource Development
(703) 292-4673
vsantiago@nsf.gov



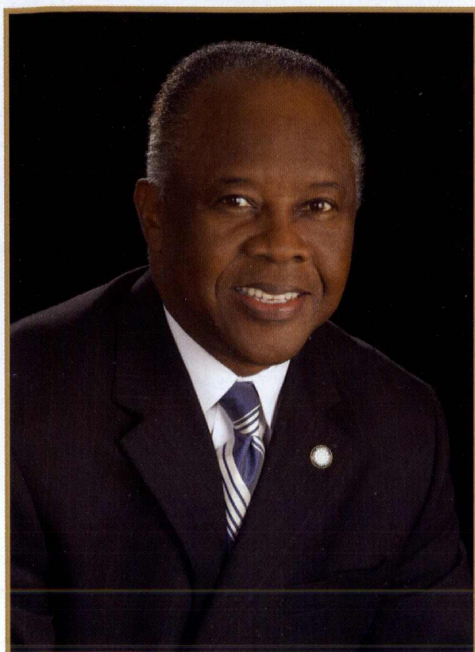
Dr. A. James Hicks
Program Director
Louis Stokes Alliances for Minority Participation
(703) 292-8640
ahicks@nsf.gov

Contents

Message from the LSAMP Program Director.....1
 UREP/STEM Bachelor Degrees Report2
 Retired Congressman Louis Stokes Returns to Washington, D.C.3
 Cora Marrett Appointed Assistant Director for Education and Human
 Resources at NSF5
 Starting Small but “Thinking Big”- An Interview with NSF Program Director
 Art Hicks6
 Alabama LSAMP Hosted Regional NSF Technical Workshop7
 Native American and Pacific Islander Research Experience Program9
 The DOE-NSF Collaboration in Action at Brookhaven National Laboratory11
 Alliances’ Two Greatest Accomplishments16
 Alliance Student News22
 LSAMP Award History26
 LSAMP Profiles
 Alabama28
 All Nations29
 California.....30
 California State University31
 Colorado32
 Florida-Georgia33
 Georgia34
 Houston35
 Illinois36
 Indiana37
 Islands of Opportunity38
 Kentucky-West Virginia39
 Louisiana40
 Michigan41
 Mid Eastern42
 Mississippi.....43
 New Mexico44
 New York City45
 North Carolina.....46
 Northeast47
 Ohio48
 Oklahoma49
 Pacific.....50
 Peach State51
 Philadelphia.....52
 Puerto Rico.....53
 South Carolina.....54
 State University of New York55
 Tennessee56
 Texas A&M University System57
 University of Texas System58
 University System of Maryland59
 Urban Massachusetts.....60
 Washington/Baltimore/Hampton Roads.....61
 Western Alliance to Expand Student Opportunities62
 Wisconsin63
 LSAMP Directory64

FROM THE LSAMP PROGRAM DIRECTOR
A. JAMES HICKS, Ph.D.

A Broad Range of Actions Continue in the Dissemination of Best Practices and Strategies Learned from LSAMP



Two thousand seven marks the second year in succession that three new alliances joined the NSF's Louis Stokes Alliances for Minority Participation Program (LSAMP). This edition of the LSAMP Magazine depicts expansion of the national program to include new projects in Minnesota, Up-State New York and Virginia/North Carolina. Lead campuses, respectively, are the University of Minnesota, Syracuse University and the University of Virginia. The national program now covers 37 states, the District of Columbia and Puerto Rico.

A broad range of actions continue in the dissemination of best practices and strategies learned from the LSAMP Program. Sample actions include the March 2006 international trip by the LSAMP National Director to New Zealand and Australia. Educational leaders and government officials in the two countries invited and sponsored the educational exchange. Audiences from the Royal Society of Education, University of Auckland and Sydney University were quite receptive and interested in the LSAMP Model and program successes nationwide.

Another dissemination action involved LSAMP outreach activities to education officials and other interested persons, via television KHON TV interview in Honolulu on October 25, 2006, and Congresswoman Eddie Bernice Johnson's Dallas, Texas Cable Show on Washington, D.C. TV - Channel 27. The cable show aired four times during the week of June 13, 2007. Also, a second printing of dissemination copies of evaluation documents telling the LSAMP Story depicted in "Revitalizing the Nation's Talent Pool in Science, Technology, Engineering and Mathematics (STEM)," and a description and analysis of best practice findings, "Programs Promoting Participation of Underrepresented Undergraduate Students in Science, Mathematics, Engineering and Technology Fields," are expected for release to colleges and universities nationwide by mid-summer 2007. Print media articles covering the LSAMP Story are also planned for 2007.

We encourage your review of the entire LSAMP Magazine and invite your special attention to the spotlight on Congressman Louis Stokes (Retired), and Dr. Cora Marrett. The two summary articles on undergraduate research experiences in Costa Rica and at Brookhaven National Laboratory are but small samples of LSAMP student and faculty mentor internships.

We are sure that you will enjoy the 2007 edition and many thanks for your partnership, commitment and dedication. Together we can make a difference!

UREP/STEM Bachelor Degrees Report

Population: All Institutions and Alliances
 Period: Academic Year 2005-2006 / Reporting Year 2005

Disciplines by Race/Ethnicity

Discipline	Black or African American	Hispanic or Latino	Native American ¹	Native Hawaiian or Pacific Islander	More Than One Race Reported - Minority ²	Total
Agricultural Science	455	422	79	26	5	987
Chemistry	571	599	43	39	3	1255
Computer Science	2160	1594	139	188	3	4084
Engineering	3004	4208	338	188	56	7794
Geosciences	28	130	21	5	0	184
Life/Biological Sciences	3670	4384	395	319	22	8790
Mathematics	647	652	96	70	0	1465
Physics/Astronomy	108	323	20	12	2	465
Environmental Science	84	142	50	8	1	285
Total	10727	12454	1181	855	92	25309

Gender by Race/Ethnicity – All Disciplines

Discipline	Black or African American	Hispanic or Latino	Native American ¹	Native Hawaiian or Pacific Islander	More Than One Race Reported - Minority ²	Total
Male	5073	6991	663	499	19	13245
Female	5635	5453	518	356	73	12035
Not Reported or Unknown	19	10	0	0	0	29
Total	10727	12454	1181	855	92	25309

Notes:

¹ The Native American category includes American Indians and Alaska Natives.

² The More Than One Race Reported - Minority category comprises non-Hispanic/Latino individuals who report a) two or more race categories and b) one or more of the reported categories includes: American Indian, Alaska Native, Black or African American, Native Hawaiian or Other Pacific Islander.

Printed: April 17, 2007

Retired Congressman Louis Stokes Returns to Washington, D.C.

The 2006 Joint Annual Meeting was honored by a visit and presentation by Retired Congressman Louis Stokes, the namesake for the National Science Foundation's (NSF) Louis Stokes Alliances for Minority Participation (LSAMP) Program. He made an electrifying speech to the Bridge to the Doctorate students, LSAMP principal investigators and project directors during his visit to Washington, D.C. The Joint Annual Meeting brings together the principal investigators, project directors and selected students from all programs housed in the Division of Human Resource Development (HRD). Congressman Stokes was introduced by Dr. Arden Bement Jr., Director of the National Science Foundation. Dr. Art J. Hicks, Program Director for LSAMP and the Bridge to the Doctorate Program, expressed appreciation to Stokes for his visit and presentation. Stokes retired from the U.S. Congress in 1998 after 30 years of service. He was the first African American elected to congress from the state of Ohio. He was the guiding force in the creation of numerous minority focused programs at the NSF and the National Institutes of Health (NIH). In 1999, the NSF Alliances for Minority Participation (AMP) Program was renamed the Louis Stokes Alliances for Minority Participation Program in honor of this great pioneer.



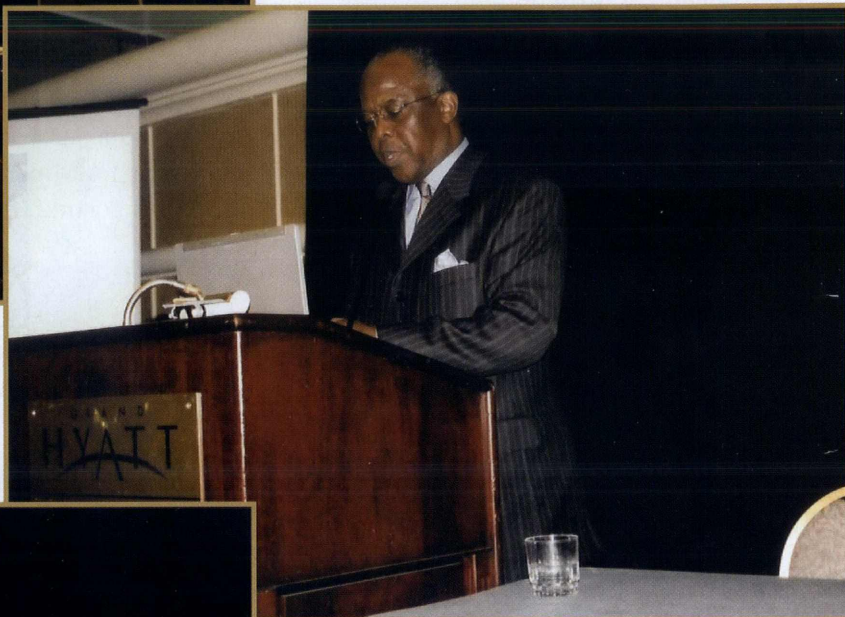
Retired Congressman Louis Stokes



Dr. Art Hicks, Congressman Louis Stokes, Dr. Arden Bement (standing) and Bridge to the Doctorate students



Dr. Arden L. Bement, Jr.



Dr. Art J. Hicks



*Conference participants
listen to presentation
by Congressman Stokes*



Bridge to the Doctorate students

Cora Marrett Appointed Assistant Director for Education and Human Resources at NSF

Dr. Cora B. Marrett, the University of Wisconsin's (UW) senior vice president for academic affairs, has been appointed assistant director for the Directorate for Education and Human Resources (EHR) at the National Science Foundation (NSF). She assumed the post February 1, 2007.

Marrett, who was assistant director for NSF's Directorate for Social, Behavioral and Economic Sciences (SBE) in the 1990s, will lead the NSF's mission to achieve excellence in U.S. science, technology, engineering and mathematics (STEM) education at all levels and in both formal and informal settings. EHR's mission is to support the development of a diverse and well-prepared workforce of scientists, technicians, engineers, mathematicians and educators and a well-informed citizenry that has access to the ideas and tools of science and engineering.

"We're thrilled to have Dr. Marrett join us at NSF again at this critical time in our agency's mission," said NSF Director Arden Bement. "Leadership in STEM education at NSF is immensely important, and the agency is fortunate to have a professional such as Dr. Marrett leading EHR."

Marrett served as UW's senior vice president for academic affairs for six years. Her NSF position in Arlington, VA, will be in conjunction with the UW-Madison Department of Sociology, where she will remain a tenured faculty member. In 2005, she received the Erich Bloch Distinguished Service Award from the Quality Education for Minorities (QEM) Network, given annually to an individual who has made singular contributions to the advancement of science and to the participation of groups underrepresented in science, technology, engineering and mathematics.

Prior to her appointment at the UW System, Marrett served as senior vice chancellor for academic affairs and provost at the University of Massachusetts-Amherst for four years. She was a member of the UW-Madison faculty from 1974 to 1997, with appointments in sociology and Afro-American studies. Marrett advanced from associate professor to full professor and was associate chairperson of the Department of Sociology (1988-1991). She was affiliated with the Energy Analysis and Policy Program and the Wisconsin Center for Education Research.

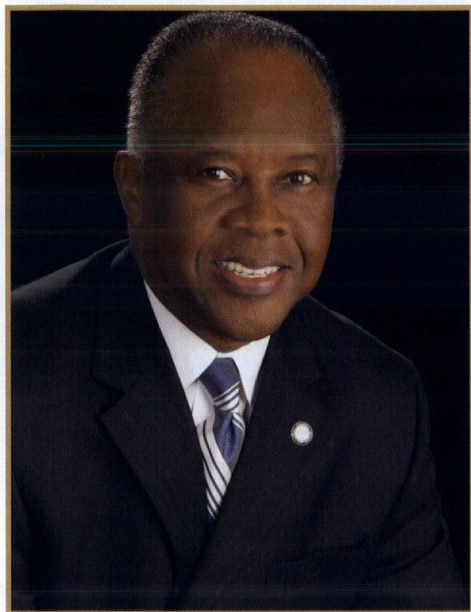


Dr. Cora Marrett

From 1992-1996, she served at NSF as the first SBE assistant director. She received the NSF's Distinguished Service Award for her leadership in developing new research programs and articulating the scientific projects of the directorate.

From 1990-1992, she held a half-time appointment while serving as director of two programs for the United Negro College Fund under a \$2.4 million grant from the Andrew Mellon Foundation. In 1976-1977, Marrett was on leave as a fellow at the Center for Advanced Study in the Behavioral Sciences in California. Prior to joining the faculty at UW-Madison in 1974, Marrett was an assistant professor of sociology at the University of North Carolina (1968-1969) and an assistant and associate professor of sociology at Western Michigan University (1969-1974). From 1973 to 1974, she was a senior policy fellow at the National Academy of Sciences in Washington, D.C. Marrett holds a B.A. degree from Virginia Union University (1963), and M.A. (1965) and Ph.D. (1968) degrees from UW-Madison, all in sociology. She received an honorary doctorate from Wake Forest University in 1996, and was elected a fellow of the American Academy of Arts and Sciences in 1998 and the American Association for the Advancement of Science in 1996. She is widely published in the field of sociology and has held a number of public and professional service positions.

Starting Small but “Thinking Big” -- An Interview with NSF Program Director Art Hicks



At Tougaloo College, a small historically black institution in Jackson, Mississippi, Art Hicks was inspired to change his major from history to biology when his professor recognized his talent and encouraged Hicks to become his laboratory assistant. Hicks found biology so exciting, that he helped organize the college's first Biology Club. The road from college has taken Hicks on a tremendous journey, with stops in academia and government. Now, as the program director of NSF's Louis Stokes Alliances for Minority Participation (LSAMP) program, Hicks is inspiring young, minority students to pursue careers in science and math. Hicks recently received Congressional honors for his leadership of the LSAMP program.

NSF: Please share your early experience with science and how it led to NSF. **Hicks:** In the late 1950's, Dr. Brown, a representative from the NSF, spoke to selected students at Jim Hill High School in Jackson, Mississippi, about careers in science and math. My classmates and I were energized by Dr. Brown and the seemingly countless number of opportunities in science

and math fields that he mentioned. Many of us went on to earn graduate degrees in a number of fields including teacher education, mathematics, physics, engineering and botany.

NSF: What do you consider to be the biggest challenge to LSAMP? **Hicks:** The lack of employing best practices and strategies at the colleges and universities in the LSAMP portfolio remains a challenge, but significant progress is being made. Selected states and regions continue making major budgetary commitments to broaden participation. For example, South Carolina contributes greater than \$600,000 annually to LSAMP and Alaska-Anchorage opened a \$14-million science and engineering facility that houses the LSAMP program.

NSF: With your early research experience as an undergraduate, what advice would you give institutions to provide similar opportunities to their students? **Hicks:** Clearly, the integration of research and education looms large for most institutions given the traditional teaching and learning delivery system. An instructional model involving 'active learning' in contrast to the old straight lecture approach would likely reach the mark. The active learning model would provide small group interactions as a teaching-learning strategy in answering research questions. Institutions can change the instructional delivery system.

LSAMP has increased the quantity and quality of underrepresented minority students graduating with STEM degrees. Since its inception, minority enrollment in STEM majors at more than 450 LSAMP-participating institutions increased from 35,670 in 1991 to more than 205,000 in 2003. Annually, almost 25,000 baccalaureate degrees are conferred to minority students as a result of LSAMP alliances.

NSF: What advice would you give undergraduates choosing between graduate school and the workforce? **Hicks:** Regardless of the size of the institution they attend, I would encourage them to “Think BIG, Sight Globally, Act Locally and Work with a Passion!” The best and brightest students must look beyond their individual campuses and regions. They must incorporate a world view in the learning process, get involved in selected community service activities and work with focused enthusiasm – fire and fervor!

**Alabama LSAMP Hosted
Regional NSF Technical Workshop
Monday, March 5, 2007
AGENDA**

Welcome and Introductions.....Dr. Carolyn Braswell
*Project Director, ALSAMP/AAGEP
The University of Alabama at Birmingham*

PurposeDr. Louis Dale
*Principal Investigator, ALSAMP/AAGEP
The University of Alabama at Birmingham*

Presentations:

NSF Requirements and Procedures for SubcontractsMs. Pamela Hawkins
*Grants & Agreement Specialist
National Science Foundation*

Execution of Subcontracts at UAB.....Ms. Cynthia Christian
*Grants and Agreement Manager
The University of Alabama at Birmingham*

UAB Requirements and Procedures for Subcontracts.....Ms. Tina Ealy
*Associate Director, Grants & Contracts Accounting
The University of Alabama at Birmingham*

UAB Requisition Payment ProcessMs. Anita Belcher
*Bridge to the Doctorate (BD) Program Assistant
The University of Alabama at Birmingham*

Ms. Virginia Beck
*AAGEP Program Assistant
The University of Alabama at Birmingham*

Alabama LSAMP Re-Budgeting Process.....Ms. Gjuana Cleveland
*ALSAMP Program Assistant
The University of Alabama at Birmingham*

Question/Answer Period

Lunch

Adjournment

Alabama LSAMP hosted a Regional NSF Technical Workshop at The University of Alabama at Birmingham on Monday, March 5, 2007. The keynote speaker was Ms. Pamela Hawkins, NSF Grants and Agreements Specialist. The workshop, focusing on subcontract agreements and activity documentation, was attended by 41 participants from Alabama LSAMP partner institutions, Alabama EPSCoR representatives, Peach State LSAMP and Greater Philadelphia LSAMP.



Ms. Pamela Hawkins



Dr. Louis Dale



Ms. Cynthia Christian



Ms. Tina Ealy



Dr. Carolyn Braswell



*Left to right: Dr. Steven Cox,
Ms. Cynthia Christian, Dr. Cheryl Dozier,
Ms. Pamela Hawkins, Dr. Louis Dale
Mr. Wayne Thomas, Ms. Tina Ealy,
Ms. Venice Keene*



Workshop Participants



Workshop Participants



Workshop Participants



Workshop Participants

Native American and Pacific Islander Research Experience (NAPIRE) Program at Las Cruces Biological Station, Costa Rica

Prepared by Dr. Karin Rita Gastreich
Deputy Director of the OTS Education Program
Organization for Tropical Studies, Duke University

With funding from the National Science Foundation, LSAMP Program, the Organization for Tropical Studies (OTS) initiated the first 8-week NAPIRE (Native American and Pacific Islander Research Experience) Program in the summer of 2006. Based at OTS' Las Cruces Biological Station in Southern Costa Rica, NAPIRE emphasized multidisciplinary experiences in which students were introduced to patterns and processes of tropical ecosystems, worked on group research projects, and met with members of local native communities to learn about conservation dilemmas in the tropics.

Five research mentors from five universities worked closely with the students on the completion of independent projects in field tropical ecology. Students contributed fully to all aspects of project development including definition of questions and hypotheses, experimental design, data collection and analysis, and final write up and interpretation. Project results were presented in both written and oral format following the protocol of scientific articles and professional meetings.

Student projects reflected the variety of research opportunities available at Las Cruces, focusing on topics ranging from the role of logs in forest succession to assessment of water quality in the nearby Guaymi Indigenous Reserve. In addition to the research experience, the program included two weeks of travel throughout Costa Rica, allowing the students to experience a variety of tropical environments as well as to meet with indigenous communities of the country. The NAPIRE group visited highland ecosystems such as cloud forest and paramo, as well as lowland wet forest on the Atlantic slope of Costa Rica and lowland dry forest on the Pacific slope. Students learned about contemporary indigenous issues through cultural encounters with the Boruca, Guaymi and Bribri tribes, and had a look at indigenous history in important pre-Colombian sites such as Guayabo National Monument.

Abstracts of Students' Research Projects

The Role of Logs in Tropical Succession

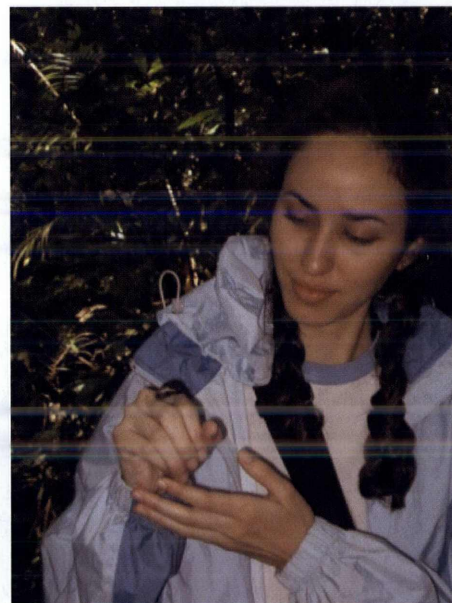
Sheena Hillstrom, Washington State University
Mentor: Dr. Chris Peterson, University of Georgia

Herbivory of Two Restoration Sites in Southern Costa Rica

Megan Deffner, University of Hawaii
Mentor: Dr. Catherine Lindell, Michigan State University

*Arthropod Biodiversity and Nectar Production of *Inga Edulis**

Monica Pamaska, College of Menominee Nation
Mentor: Dr. Catherine Lindell, Michigan State University



Ryanna Fernandez with one of her study organisms.

Abstracts of Students' Research Projects

Territorial Species Behavior in Various Habitats.

Ryanna Fernandez, University of Hawaii at Manoa
Mentor: Viviana Ruiz-Gutierrez, Cornell University

A Study of Phytotelmic Communities in Costa Rica

Sarah Kissoon, Haskell Indian Nations University
and Tanya Tavares, University of Hawaii
Mentor: Dr. Ray Petersen, Howard University

Measuring Water Quality in the Guaymi Forest Reserve of Coto Brus

Annalee Herrera, University of Washington and
Trisha Soares, University of Hawaii at Hilo
Mentor: Dr. Jane Hill, Yale University



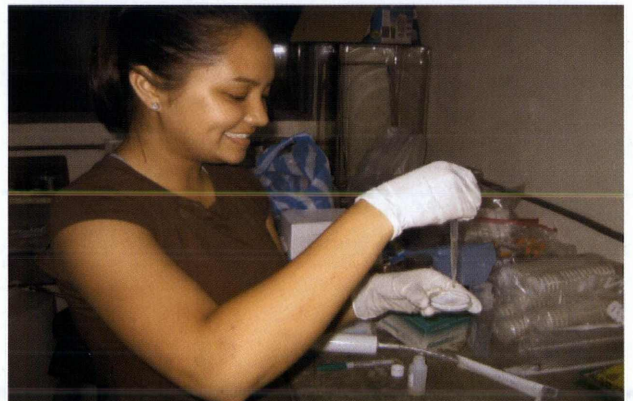
Sheena Hillstrom measures tree growth with mentor
Chris Peterson.



Trisha Soares (left) and Anna Lee Herrera (right) run a water sample through a filter in search of aquatic microbes.



Megan Deffner reviews her field data.



Anna Lee Herrera tests for microbes in water samples from the
Guaymi Reservation.

The Organization for Tropical Studies (OTS) is a nonprofit consortium of 62 universities, colleges and research institutions. OTS conducts graduate and undergraduate educational programs in tropical biology, coordinates and facilitates field research, owns and operates three field stations (La Selva, Las Cruces, and the Palo Verde Biological Stations) in contrasting life zones in Costa Rica, and works in cooperation with governmental and partner agencies on issues of conservation, environmental education, and natural resource management. For more information on OTS and its programs, go to www.ots.duke.edu.

The DOE-NSF Collaboration in Action at Brookhaven National Laboratory

by Noel D. Blackburn, Office of Educational Programs, Brookhaven National Laboratory

Undergraduate students can receive National Science Foundation (NSF) funding to participate in Department of Energy (DOE) research internships due to a Memorandum of Understanding (MOU) between the agencies. The MOU, signed in 2001, created synergy in the Federal investment for science, technology, engineering, and mathematics (STEM) workforce development through collaboration and the coordination of activities by taking advantage of DOE's national laboratory research facilities¹. Through this MOU, undergraduate students who have been accepted for one of the DOE-Office of Science (DOE-OS) laboratory research internships are eligible to receive funding from NSF.

Traditionally, NSF has funded university research and student development, and DOE has funded research tools and equipment at national laboratories across the country. This collaboration draws upon the best abilities of each agency, by introducing the undergraduate population to major research tools by making research facilities accessible to them. As a result, 170 NSF-sponsored participants have conducted research activities in the life and physical sciences, computer sciences, and atmospheric sciences at Brookhaven National Laboratory (BNL) in the last three years. Following is a review of the internship programs at BNL and the importance of the DOE-NSF relationship in developing a pool of potential candidates to replace an aging workforce in the STEM disciplines².

About Brookhaven National Laboratory (BNL):

Brookhaven National Laboratory, founded in 1947, is a multi-disciplinary lab and is one of ten national laboratories under the DOE-Office of Science. The Lab receives the majority of its research dollars and direction from the Office of Science; Brookhaven Science Associates (BSA) manages the daily operations³. BNL is home to world-class research facilities and scientific departments, and attracts resident and visiting scientists from many research fields. This outstanding mix of machine- and mind-power has produced research work resulting in six Nobel Prizes in science.

The Office of Educational Programs (OEP) at BNL ad-

ministers DOE's undergraduate, graduate, and faculty research programs, and is responsible for the implementation of the MOU with NSF. The primary goal of OEP is to "educate the next generation of scientists, engineers, and technicians." The staff, called "Team OEP," is a dedicated group of professionals who, along with numerous world-renowned scientists, serving as mentors, create a welcoming and friendly atmosphere conducive for students conducting research.

DOE Internship Programs:

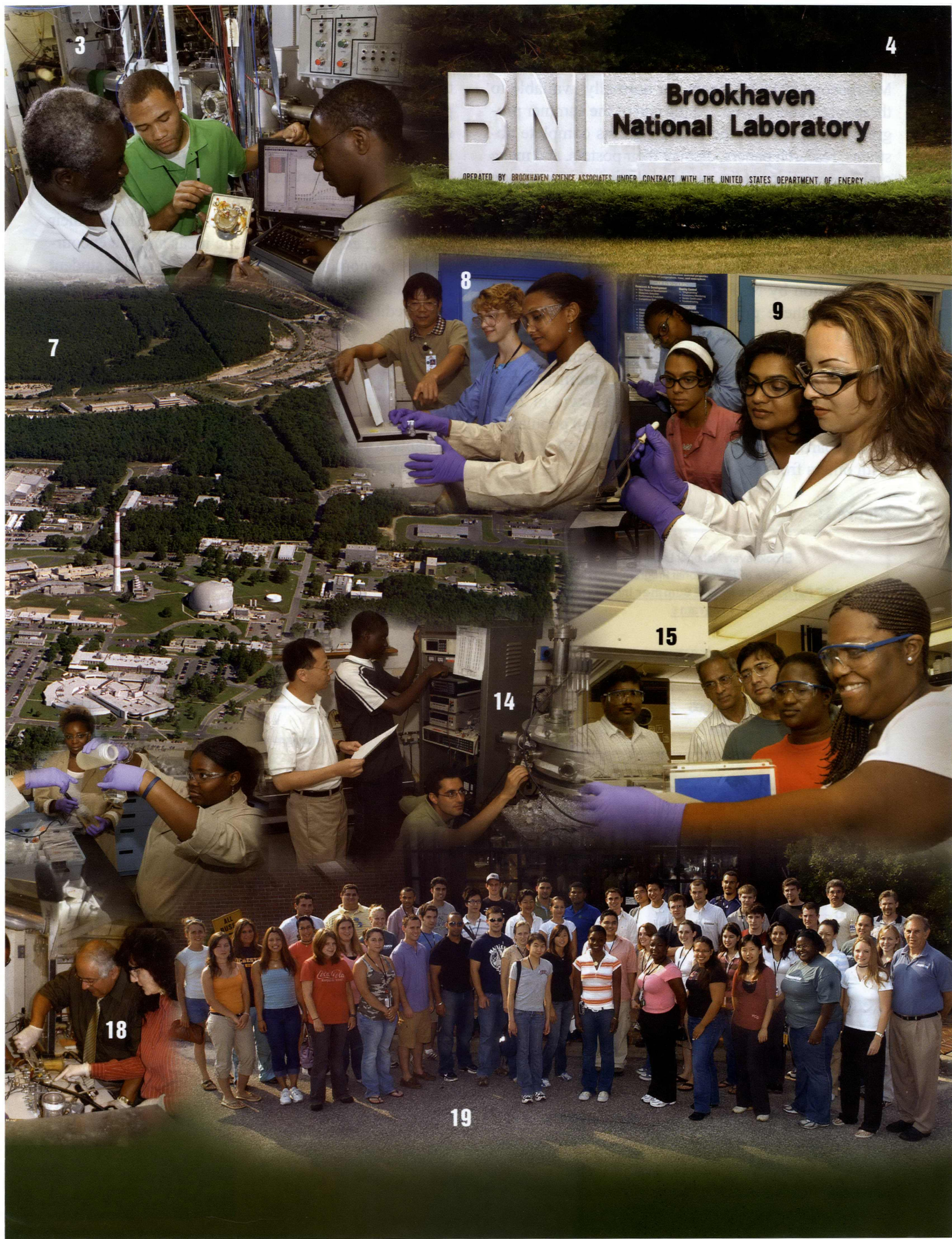
To develop a workforce pool for the future, DOE-OS Office of Workforce Development for Teachers and Scientists manages three undergraduate summer internship programs and one faculty summer research program. The summer programs for undergraduates are Community College Institute (CCI), Pre-Service Teachers (PST), and Science Undergraduate Laboratory Internship (SULI)⁴. Interns spend ten weeks at a national laboratory under the supervision of a scientific mentor conducting research activities in fields such as physics, chemistry, biology, engineering, imaging and neurosciences, computer science, computer modeling, nanoscience, environmental science and medicine.

The faculty program is called Faculty and Student Teams (FaST). The FaST program supports a team comprised of one faculty member and two-to-three undergraduate students. The faculty member identifies a mutually beneficial research area amenable to collaboration between the faculty member and the hosting laboratory scientist. An important objective of the FaST program is to develop sustainable relationships between the faculty and the national lab to further advance the research capabilities at the professor's home institution. This program enables professors to submit joint proposals to federal agencies, publish papers in peer review journals, create new undergraduate/graduate courses, and develop new research labs at their colleges/universities.

All of the programs provide the opportunity for NSF-supported students and faculty to use premier research machines such as the National Synchrotron Light



2006 BNL Summer Internship Participants



BNL Brookhaven National Laboratory

OPERATED BY BROOKHAVEN SCIENCE ASSOCIATES UNDER CONTRACT WITH THE UNITED STATES DEPARTMENT OF ENERGY

3

4

7

8

9

15

14

18

19

Source (NSLS) or a Scanning Transmission Electron Microscope (STEM), tools not normally available to these researchers-to-be. At the end of the summer programs, interns from the four programs complete abstracts, research papers, display their posters, and make oral presentations at the summer closing poster session and symposium. This prepares and introduces them to the presentation and disclosure aspects of scientific work.

Participation by NSF-sponsored undergraduates and faculty in these programs at BNL has steadily increased in the last three years from four in 2003, to 74 in 2006 (see Figure 1). This has had a tremendous impact and influence on BNL summer internship programs as indicated by Figure 2. As shown, in 2006 OEP hosted its largest total DOE internship population of 160 participants integrating NSF-funded students with others from across the country.

Figure 1:

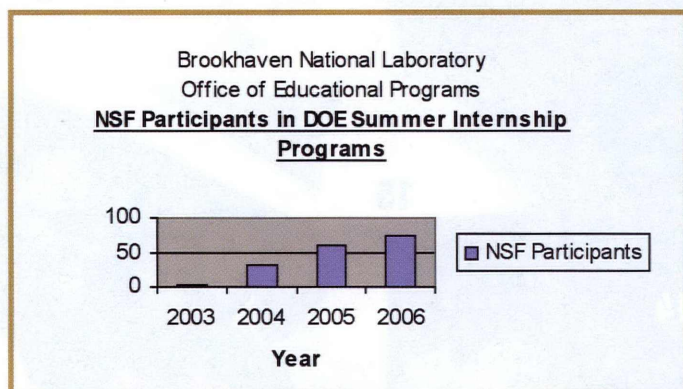
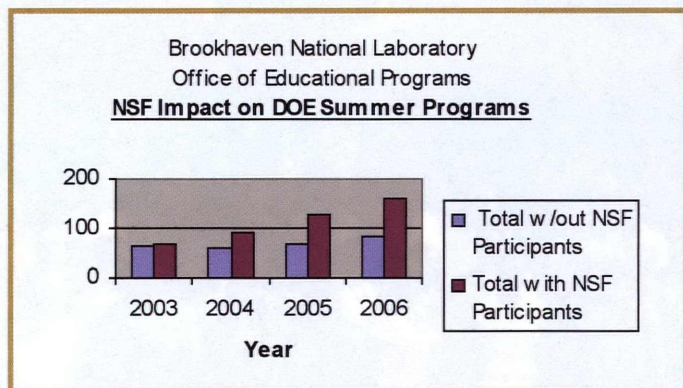


Figure 2:



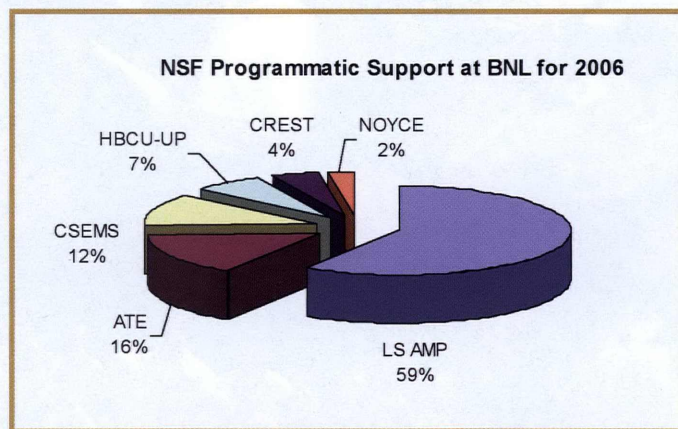
At BNL, these students and faculty are exposed to, and perform real research at large facilities such as the Relativistic Heavy Ion Collider (RHIC), NSLS, Laser-Electron Accelerator Facility (LEAF), and the NASA Space Radiation Laboratory. These unique research

tools cannot be found at any university or college, and the research experience gained at BNL cannot be reproduced elsewhere. In addition, the opportunity to be mentored by and work among world-class scientists and pioneers in their field is an extraordinary experience. Just as important are interns' interactions with peers of similar interests and intellect, meeting students from other institutions around the country, sharing their knowledge, exploring scientific ideas and the encouragement to continue their academic paths. One student indicated, "as a result of my experience at BNL, I feel so incredibly confident applying for graduate school."⁵

National Science Foundation Support:

In staying ahead of the curve for strengthening broad participation in STEM disciplines, the Louis Stokes Alliance for Minority Participation (LSAMP) provided the majority of the NSF programmatic support at 59% (see Figure 3). Other funds were provided by NSF's Advanced Technological Education (ATE) at 16%, Computer Science, Engineering, and Mathematics Scholarship (CSEMS) at 12%, Historically Black College and Universities Undergraduate Program (HBCU-UP) at 7%, Center for Research Excellence in Science and Technology (CREST) at 4%, and Robert Noyce Scholarship Program at 2%.

Figure 3:



Conclusion:

The landscape is set with two groups: the NSF-sponsored students, full of potential and enthusiasm to expand their learning horizons through hands-on research activities, and the DOE national laboratory community eager to mentor and nurture young minds to continue the quest for knowledge.

- 1: Medgar Evers College – CUNY: Professor Dereck Skeete (sitting) with FaST intern Frank Ogero analyzing data on Indoor Vapor Intrusion of Volatile Organic Compound.
- 2: OEP Staff and some interns in BNL 2006 Community College Institute in front of the Office of Educational Programs building.
- 3: Southern University at Baton Rouge: Professor Elhag Shaban (left) with FaST interns Eric Huey and Marcus Mason inspecting a device from their project on Development of Single and Double GEM (Gas Electron Multiplier) Based Detectors.
- 4: View of the entrance to BNL site.
- 5: City College of New York – CUNY: Professor James Hammonds (center) directs FaST intern Evelyn Mejia and intern Christopher Persaud while working on Self-Powered Oil-Fired Heating System based on Thermophotovoltaic Power Generation. Missing is FaST intern Martin Nolan.
- 6: North Carolina A&T State University: Professor Roy Coomans (3rd from right) working with FaST interns Nina Kean, Jamie Brun-gard, and Georgia Sawyer, along with SULI interns Priscilla Randolph and Shurrita Davis on Variations in Soil and Water Chemistry of Selected Ponds at Brookhaven National Laboratory.
- 7: Aerial view of Brookhaven National Laboratory. The Laboratory is nestled in 5300 acres of pine barren lands with part of the headwaters of the Peconic River located on site. The Relativistic Heavy Ion Collider (RHIC) ring is in the background.
- 8: Central State University: FaST interns Amanda Storm and Tigisti Kesete being supervised by BNL scientist Dr. Minfang Yeh (back) while working on samples on Solvent Purification and Fluor Selection for Gadolinium-loaded Liquid Scintillators. Missing is Professor Suzanne Seleem.
- 9: Queensborough Community College (QCC) & Queens College (QC) – CUNY: Professor Sharon Lall-Ramnarine (2nd from front) from QCC supervises SULI intern Alejandra Castano (QC) working on Ionic Liquids. Observing are CCI intern Katherine Urena (QCC) and FaST intern Jasmine Hatcher (QCC). Missing is FaST intern Kijana Kerr.
- 10: Cheyney University: Professor Wenyi Bi (pointing at screen) explains some results from the project Creating Information System of Oncological Methylated DNA data to FaST interns Reginald Gabriel and Walter Lewis.
- 11: Florida A&M University: Professor Ray O'Neal and FaST interns Allen Sharper, Alishia Ferrell, and Jeremy Martin position their antenna that is part of the Ultra High Energy Cosmic Rays (UHECR) project.
- 12: University of Delaware: Professor Robert Opila (center) testing equipment at the National Synchrotron Light Source with FaST interns Christopher Dixon and Saka Okyere-Asiedu for their project on
- 13: Southern University at New Orleans: Professor Murty Kambhampati (left) assisting FaST interns LaTonya Stemley and Ha'Wanna St. Cyr on their project Environmental Health Studies on Peconic River Headwaters.
- 14: City College of New York – CUNY: Professor Jiufeng Tu (left) monitoring FaST interns Lionel Cohen and Damion Campbell while working on their project - Nucleation Properties of Materials Deposited onto Carbon Nanotubes at Low Temperatures.
- 15: Elizabeth City State University: Professor Hirendra Banerjee (3rd from left) with BNL researchers Dr. Subramanyam Swami-nathan and Dr. D. Kumaran overseeing FaST interns Jacqueline Gibbs and Tiffany Jordan perform work on their project - Expression and Purification of a Yeast Hypothetical Protein.
- 16: OEP staff and participants in BNL 2006 Faculty and Student Teams (FaST) in front of the Office of Educational Programs building.
- 17: Dowling College: Professor Lori Zaikowski (back) directing FaST intern Juan Alicea on his project Energetics of Charge Separation in Medium Polarity Solvents.
- 18: Farmingdale University – SUNY: Professor Hazem Tawfik (2nd from right) assembling fuel cells while FaST interns Raja Crow-ley, Neville Perkins, and Fida Abdullah take notes for their project on the Performance Testing and Optimization of PEM Fuel Cell Systems.
- 19: OEP staff and interns in BNL 2006 Science Undergraduate Laboratory Internship group photo in front of the Office of Educa-tional Programs building.

Citations, Bibliography

- 1) *MOU between DOE and NSF*, Meniz, Ernest J., and Rita R. Colwell, 2001
- 2) *Revitalizing the Nations Talent Pool in STEM*, Clewell, Chu, Beatriz, Clemencia Cosentino de Cohen, Lisa Tsui, and Nicole Deterding, 2006.
- 3) <http://www.bnl.gov/bnlweb/history/>
- 4) <http://www.bnl.gov/education/programs.asp>
- 5) *Summer Student Exit Surveys*, 2006.
- 6) *Westat Report*, Sharp, Laurie, Brian Kleiner, and Joy Frechtling, 2000. A Description and analysis of the Best Practice Findings of Programs Promoting Participation of Underrepresented Undergraduate Students in Science, Mathematics, Engineering, and Technology Fields. NSF publication #01-31.
- 7) *Rising Above the Gathering Storm*, The National Academies, 2005
- 8) *Science, Volume 302 No. 5653, pg 2080, 19 December 2003.*
- 9) *LSAMP: Bridge to the Doctorate III*, Dale, Louis, University of Alabama at Birmingham, 2006

Alliances' Two Greatest Accomplishments

Alabama

Auburn University hosted The Second Joint Meeting of the ALSAMP Scholars/Bridge to the Doctorate (BD) Research Conference and ALSAMP/AAGEP Spring Executive Committee Meeting in Auburn, Alabama. The two day event featured Dr. Luther Williams, a former assistant director at NSF as guest speaker, research presentations by ALSAMP and BD students and breakout sessions focusing on the graduate school process and critical challenges faced by undergraduates. Awards were presented to 30 LSAMP Scholars and BD Fellows for their outstanding poster presentations. Over 125 students, faculty and administrators from the twelve Alabama Alliance institutions participated in the conference.

In 2005-2006, ALSAMP supported two BD Supplemental Activities: the second year of a BD-Cohort III at The University of Alabama at Birmingham (UAB) and the first year for a BD-Cohort IV at Tuskegee University. Ten of the twelve students admitted to Cohort-III continued in enrollment as master's students at UAB for the 2006-2007 academic year with one student receiving an NSF graduate fellowship.

All Nations

The All Nations LSAMP Funded for Phase I. The All Nations Louis Stokes Alliance for Minority Participation (ANLSAMP) was awarded a \$5 million renewal grant to continue its work with American Indians in higher education. Over the next five years, ANLSAMP will use the money to meet its goals of doubling the number of American Indians achieving Bachelors degrees in Science, Technology, Engineering and Mathematics (STEM).

Evaluation and Dissemination. One of the most exciting additions to the ANLSAMP program is the formation of a committee of education research professionals, ANLSAMP staff and students whose goal is to assist ANLSAMP in developing, implementing and evaluating its strategic plan. The committee will help design and conduct culturally aware research projects and disseminate the findings to ANLSAMP partner institutions and in peer reviewed academic journals.

California

In 2005-06, UC San Diego's Bridge to the Doctorate (BD) cohort of 12 graduate students successfully completed their first year of doctoral studies. In spring 2006, UC Davis was selected to host the Bridge to the Doctorate Cohort IV, and identified the new cohort of 12 graduate students for fall 2006 enrollment. Other BD sites are UCLA and UC Irvine.

The new BD cohort hails from four UCs: Berkeley, Davis, Riverside, and San Diego; and from the California State University LSAMP: CSU Fresno, CSU Los Angeles, CSU Sacramento and CSU San Francisco. Thus, the BD activity represents statewide synergy between the state's two Louis Stokes Alliances, facilitating transition to graduate education throughout California.

UC Irvine held its 15th annual Summer Science Academy for 45 newly enrolled freshmen in declared STEM majors. The Academy prepares students for the transition from high school to UCI, and the fast-paced ten-week quarter system. Students enroll in university level courses and receive UCI academic credit. Academic support is provided through special courses relevant for their major, workshops on study strategies, time management, computer tools, note-taking and exam preparation; homework sessions and study groups coordinated by mentors, and individual counseling.

California State

In 2005-2006, 2,979 "level 1" undergraduate students were enrolled in campus-based CSU-LSAMP programs. Based on self-identification of race/ethnicity and major, the 2,979 "level 1" students included 2,881 URM-STEM students, 22 URM non-STEM students and 76 non-URM/STEM students. In addition, CSU-LSAMP conservatively estimates that at least 2,170 non-LSAMP students (i.e., "level 2" students) had the opportunity to participate in LSAMP supported activities (e.g., AY math and science workshops or other large group activities).

In 2005-2006, CSU-LSAMP supported two Bridge to the Doctorate (BD) Supplemental Activities: the second year of a BD-Cohort II Supplemental Activity and the first year of a BD-Cohort III Supplemental Activity. Ten (10) of the 12 students admitted to BD-Cohort II in Fall 2004 continued in enrollment as second year Masters students at Cal State LA for the full academic year. Of the 10 students continuing in 2005-2006, 7 were admitted to Ph.D. programs for fall 2006.

Colorado

Centralization of Diversity Initiative: Colorado State University has created a new administrative infrastructure that has brought significant change to the way the university recruits, retains, and graduates underrepresented doctoral students in Colorado. At CSU, the CO AMP offices have been linked to the AGEPE activities and other federally-funded initiatives, and are centralized and implemented through the office of the Vice Provost for Graduate Studies. Also, centralization will assist CSU administrators and deans to

institutionalize many CO AMP activities to insure continued support of underrepresented students after NSF funds expire.

International Initiative: In the summer of 2006, the CO AMP program at CU in Colorado Springs (UCCS) hosted a group of 16 exchange students from Taiwan. UCCS CO AMP is in the process of developing a transfer program for CO AMP students to go to Ching Yung University in Taipei. The international partnership program with Ching Yun University, supported by the UCCS College of Engineering, is a wonderful opportunity for our minority students to study abroad.

Florida-Georgia

FGLSAMP Bridge to the Doctorate program has a \$1,000,000 endowment within the College of Marine Science at the University of South Florida, made up of contributions from private donors and matching funds from the State of Florida.

FGLSAMP partner institutions achieved our stated goal of increasing the number of Institutional STEM Minorities entering into STEM graduate programs to more than 400 per year.

Georgia

Three partner institutions are ranked among the top 20 baccalaureate-origin institutions of Black STEM doctorate recipients.

The non-HBCU partner is ranked number one in awarding baccalaureate degrees to Blacks: 3rd in biology, 8th in chemistry, 9th in mathematics and 11th in computer science.

Illinois

The Illinois LSAMP was awarded a supplement by NSF to support the research experiences of 15 Illinois LSAMP participants at Argonne National Laboratory during the summer 2006. The research fellows consisted of: 5 Faculty and 10 Undergraduates from Illinois Alliance institutions. The 15 program participants obtained research experiences as a part of the Faculty and Student Teams (FaST) Program. The FaST program is a direct result of the interagency Cooperative Agreement between DOE and NSF.

Ninth Annual Illinois LSAMP Student Research Symposium was held at the Wyndham Glenview Suites in Wyndham, Illinois, with over 250 students, faculty and staff participants. The conference, which included workshops, poster and oral presentations, university/college display tables, luncheon and dinner banquets, provided participants

from the Alliance institutions an opportunity to come together in camaraderie to share results of research, compare notes, relate experiences, and to develop closer relationships.



Dr. Maria Curry-Nkansah of BP chats with a student after her keynote address at the 9th Annual ILSAMP Student Research Symposium

Indiana

The Indiana Louis Stokes Alliance for Minority Participation hosted its first Joint Annual LSAMP/AGEP Conference with the Midwest Crossroads Alliance for Graduate Education and the Professoriate on November 10-12, 2005. The conference was held at Indiana University Purdue University Indianapolis. The theme for the conference was "Empowering the Next Generation through Mentoring". Activities were organized to provide a networking forum for students, staff, faculty and administrators. There were one hundred fifty-one students, faculty, administrators and guests in attendance at the conference.

The Minority Engineering Program at Purdue University administered a LSAMP Indiana supported five-week camp for entering freshman during the summer of 2005. The program's success resulted in the establishment of a combined STEM Academic Boot Camp for the summer of 2006. The program was held July 1 - August 4, 2006 for students already accepted and planning to attend Purdue University. Forty-seven students participated in the program.



Louisiana

LS-LAMP Supports Scholars in the Aftermath of Hurricanes. In the aftermath of Hurricanes Katrina and Rita, the LS-LAMP office at Southern University Baton Rouge became the administrative service center for displaced LS-LAMP scholars and faculty. LS-LAMP used a significant portion of Phase II residual funds and a portion of the Phase III funds to support displaced LS-LAMP scholars and faculty across the country. In the fall of 2005 and the spring of 2006, LS-LAMP provided more than \$100,000 to assist over 156 displaced scholars at 27 institutions around the country.

Bridge to Doctorate Program (BDP) - The Louis Stokes Louisiana Alliance for Minority Participation (LS-LAMP) received funding for its first cohort of 12 graduate student scholars in the Bridge to the Doctorate Program. The BDP is located at Louisiana State University (LSU). These scholars are immersed in a systemic mentoring environment that emulates the 10-Strand model of LS-LAMP and of the Timbuktu Academy.

Michigan

The MI-LSAMP was initiated in November 2005. The official kickoff was held on Monday, January 23, 2006. Along with representatives and guests from the four partner universities (University of Michigan, Michigan State University, Wayne State University and Western Michigan University), there were representatives from the National Science Foundation, other federal, state and local government agencies, non profit organizations and members of the business, education and human services community.

During the summer of 2006, the MI-LSAMP completed its first pre first year summer programs. Students participated in science, engineering and mathematics programs at the partner institutions. In addition, the first MI-LSAMP All Student Day was held at the University of Michigan. This event was used to bring all of the MI-LSAMP Scholars together for community building exercises and provide opportunities to network with students and faculty from across the alliance. This activity will continue each summer and will rotate to each alliance university campus.

Mid-Eastern

MEAMP has been exemplary in offering scientific methodology/introductory research training to freshmen and sophomores and high-quality research experiences to sophomores, junior and seniors and is continually seeking to expand these opportunities.

Retention of Level 1 participants across the alliance continues to be approximately twice the national rates particularly

for African-American students.

Mississippi

Second Annual National Research Symposium - The alliance hosted over 250 students from across the southeast at this conference held from October 20-22, 2005. Oral and poster presentations were made by the attendees and keynote speakers included Dr. Matthew Tirrell, Chair of Engineering at University of California Santa Barbara and Dr. Sheila McClure, Health Science Administrator (HSA), Division of Research Infrastructure, National Center for Research Resources (NCRR) and National Institutes of Health (NIH).

Participation in LSMAMP increased by 31% and 100% of the fellows in Cohort 2 of the Bridge to the Doctorate Program were placed in doctoral programs at institutions such as Princeton, Northwestern, Georgia Tech, Georgia State University, The University of Nebraska, Mississippi State University and Jackson State University.

New Mexico

Dr. Wanda Ward, Acting Assistant Director, Education and Human Resources, National Science Foundation was the keynote speaker at the New Mexico AMP 2006 Student Research Conference on October 6, 2006. Dr. Ward was introduced by A. James Hicks, Ph.D., Louis Stokes Alliances for Minority Participation Program Director. Dr. Ward described the external drivers that are shaping the future for NSF and its mission including global competition in economic, education and workforce areas, and the American Competitiveness Initiative designed to address those issues. The annual conference hosted over 300 community college and university students, staff, faculty and administrators, along with representatives from the Oklahoma and Midwest LSAMPs, and high school juniors, seniors and advisors from the New Mexico Math, Engineering, and Science Achievement (MESA) program.

In July 2006, a fourth cohort was funded for the New Mexico State University Bridge to the Doctorate (BD) Program comprised of 12 students majoring in Engineering, Biology, Physics, Math, Animal Science and Chemistry. This, and the previous three cohorts, provided the foundational information for a poster presented at the 2006 American Society for Engineering Education (ASEE) meeting in Chicago in June; "Moving High-Performing URM Students into the Professoriate: The NMSU AMP Bridge to the Doctorate Program" authored by Lisa M. Frehill, Ricardo Jacquez, Lauren Ketcham, Amanda Lain, Rose Peña and Heather Williams.

New York City

The Alliance Course Restructuring for gatekeeper calculus, chemistry, and physics courses include an emphasis on collaborative learning, a non-competitive approach to problem solving, and workshops conducted by specially trained peer tutors and faculty members. From 2000-2006, over 100,000 students enrolled in such courses.

The LSAMP CUNY Summer Research components (2000-2006) drew participation from an average of 50 LSAMP Scholars, with an additional 40 obtaining internship opportunities at non-CUNY training sites. Over 100 CUNY faculty members participate in LSAMP activities each year as research mentors. For the 2000-2006 academic years, an average of 200 LSAMP research scholarships were offered to students via CUNY institutional support each year. From inception, over 400 LSAMP Scholars have earned BA or BS degrees at CUNY.



*Conference participants at the
54th Annual Undergraduate Research Symposium
at St. John's University*

North Carolina

Dr. Janice G. Brewington, Interim Provost and Vice Chancellor for Academic Affairs at North Carolina A&T State University, was named the PI for the North Carolina Louis Stokes Alliance for Minority Participation.

NC-LSAMP was awarded a supplemental grant to implement Cohort III of the Bridge to the Doctorate Fellowship program at North Carolina Central University. Fellows were supported through tuition scholarships, health insurance, support for travel to STEM and professional conferences and an annual stipend of \$30,000 per year for a two-year period. In addition to financial support, Bridge Scholars were provided the opportunity to interact with Masters and Ph.D. students from other disciplines through collaboration with the NSF-funded NC OPT-ED program. To date, sixteen BTDF fellows have completed their master's degrees and nine have enrolled in Ph.D. programs.

Northeast

All Alliance campuses now have offices of undergraduate research as a result of LSAMP.

An Alliance-wide Student Leadership Conference was held in the spring – this successful event will now be an annual alliance activity.

Ohio

During 2005-2006, the Ohio Alliance developed and strengthened collaborations with the Summer Research Opportunities Program (SROP), the Undergraduate Research in Molecular Genetics REU Center, the Center for Affordable Nanoengineering of Polymer Biomedical Devices REU program, and the Interdisciplinary Research at the Chemistry/Biology Interface for Undergraduates REU — all based at Ohio State University. The program directors shared information on identifying and recruiting students, orientation and weekly programming, and administration. The OSEA interns participated in the annual CIC SROP Conference hosted by the University of Illinois at Urbana-Champaign and the REU students participated in the annual Ohio Student Research Forum hosted by Ohio State University.

Ohio State University hosted the third annual Ohio Student Research Forum in August, 2006. Students reported on the results of their research at the poster session and through oral presentations. Participants also attended panels led by graduate students and faculty members and professional development workshops led by faculty and staff. One hundred five undergraduate students participated in the 2006 Forum along with 76 faculty, staff, and graduate students.

Peach State

The Alliance developed its partnership structures during this first start-up year. These structures included communication strategies, such as meetings held at a different partner institution each month and a PLSAMP listserv, and critical procedural strategies, such as budget processes across the campuses.

Summer Research Programs for Undergraduates: Fort Valley State University, Savannah State University, Southern Polytechnic State University, and The University of Georgia provided summer research opportunities for undergraduate students to work in a lab with a faculty mentor.

Philadelphia

Four Philadelphia AMP graduates were awarded their Ph.D.s in STEM disciplines in 2005-06. They are Reno Brooks, Computational Chemistry, Rutgers University; Jermaine Johnson, Neuroscience, University of Pennsylvania; Daniel Lee, Pharmacology, Florida A & M; and Zakia Williams, Florida A & M.

AMP/Sunoco Inc. -The Minority Pathfinder Awards was developed by management from Sunoco Inc and the Philadelphia Alliance to identify and acknowledge the accomplishments of minority engineers who have demonstrated leadership in science, engineering and technology in the Delaware Valley, achieved professional excellence, and who have guided and mentored the careers of minority engineering and science students and professionals. The inaugural event was held on May 25, 2006 with over 200 guests, including representation from Alliance institutions and a dozen major corporations in the Delaware Valley.

Puerto Rico

The fourth Cohort of twelve Bridge-to-the-Doctorate Fellows (2006) increased the total of BDP fellowships awarded by PR-LSAMP to forty-six. An external evaluation of the academic progress of Cohort I BDP Fellows (2003) and non-BDP students showed the following results in this 3-year period:

Academic Performance	BDP Fellows	Non-BDP Students
Average GPA in graduate courses	3.85	3.63
Average number of graduate course credits	50.2	42.9
Average number of publications in scientific journals	1.2	0.68
Average number of presentations in scientific conferences	7.3	3.7
Qualifying Exams	7 out of 8 passed in the first try (88%)	11 out of 17 passed in the first try (65%)

In academic year 2005-06, PR-LSAMP institutions awarded 3,124 B.S. degrees in STEM fields, bringing to 42,073 the total of B.S. degrees awarded in these disciplines since 1991. At the Ph.D. level, in the field of science, PR-LSAMP institutions have contributed a constant 17% during the past five years to the national pool of Hispanic Ph.D. At the University of Puerto Rico, the lead institution in the PR-LSAMP Alliance, the number of Ph.D. degrees awarded in STEM fields has increased from 9 in 1991 to 48 in 2006.

South Carolina

The LSAMP-South Eastern Alliance Graduate Education for the Professoriate (SEAGEP) collaboration successfully implemented a new undergraduate academic research component during Spring semester 2006. Forty-four STEM freshman and sophomore students from seven partner institutions completed research experiences with distinguished

STEM faculty. Many of these students participated in the LS-SCAMP summer research internship program at medical schools, national and federal laboratories and academic institutions and earned special research scholarship awards at the Annual Summer Science and Engineering Research Conference.

The Clemson University LS-SCAMP Math Excellence Workshop was featured in an article entitled: "Math Program Computes at Clemson" in the Anderson Independent Mail.

State University of New York

SUNY LSAMP has shown 91% increase in UREP STEM bachelor degree production from program inception.

SUNY LSAMP has shown an increase of UREP STEM enrollment of 252% from program inception.



Tennessee

The Annual Research Symposium was held at the University of Tennessee - Knoxville on April 7, 2006. There was a record student turnout for the conference. Approximately 200 students and guests from all Alliance institutions attended the symposium. The alliance received proclamations from the city of Knoxville and the House of Representative of the State of Tennessee. The proclamations "honored and commended the founders, organizers, and participants of the TLSAMP Program for their meritorious service to the good people of the state of Tennessee."

The Director of Oakridge National Laboratory, Jeff Wadsworth, was the conference plenary speaker and he encouraged the students to stay focused and not give-up.

A major accomplishment still continues to be a high level of organization, enthusiasm and commitment exhibited by the institutions in the Alliance. The Executive Committee

meets bi-monthly and the meetings are rotated among all Alliance institutions. The three Alliance-wide initiatives, the Summer Bridge Program, the Summer Research Program and the Research Symposium, are coordinated by this team each year.

Texas A&M University System

TAMUS LSAMP URM enrollment increased by 5%.

TAMUS LSAMP URM graduation rates have continually increased each academic year.

University of Texas System

The 2005 UT System LSAMP Student Research Conference was a great success. It was held in Richardson, TX with the University of Texas at Dallas serving as the host campus. In spite of the hurricanes that were occurring nearby, our conference was able to proceed and the students were able to present their research.

The UT System LSAMP program was honored to receive another 'Bridge to the Doctorate' cohort at the University of Texas at El Paso (UTEP). This is the third cohort awarded to the UT System LSAMP program and the second cohort hosted by UTEP.

University System of Maryland

The first cohort (2005-2007) of University System of Maryland LSAMP Bridge to the Doctorate (BD) Fellows matriculated at the University of Maryland, Baltimore County. It includes six students pursuing master's degrees in Computer Science, Electrical Engineering, Information Systems, or Mechanical Engineering, and six students pursuing doctoral degrees in Chemical and Biochemical Engineering, Chemistry and Biochemistry, Electrical Engineering, or Mechanical Engineering.

The University System of Maryland LSAMP received supplemental funding from NSF to support a second cohort of BD Fellows for 2006-2008. The University of Maryland, College Park was selected as the site for second BD cohort.

Washington/Baltimore/Hampton Roads

Substantial increases in the number of B.S. degrees produced in the STEM area among the seven partners.

The establishment of several key programs at the WBHR-LSAMP institutions (The M.S. and Ph.D. programs in Atmospheric Sciences at Howard and the new B.S. program in engineering at Norfolk State).

Western Alliance to Expand Student Opportunities

Over our Phase III LSAMP operating period, we have increased our yearly B.S. degree production by 1,005 minority STEM baccalaureates over our baseline rate.

Our LSAMP has had 4 Bridge to the Doctorate student cohorts for a total of 46 fellowship students. For the entire set of Cohort I, II, and III students, over 91% have started or plan to pursue a doctoral STEM degree. Several students have already won awards for poster presentations at national conferences and one of our Bridge to the Doctorate students won the IEC William L. Everitt Student Award of Excellence.

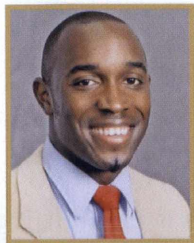
Wisconsin

The WiscAMP Small Grants Program funded 15 new projects throughout the alliance, all subsidized through in-kind monetary and staff resources of participating institutions.

Nine institutions across the alliance provided research opportunities to 35 WiscAMP scholars.

Alliance Student News

Alabama



Christophe Jackson

Christophe Jackson, UAB Bridge to the Doctorate (BD) Fellow, has been selected to receive a 2007 National Science Foundation Graduate Research Fellowship Award. The award is made to outstanding graduate students who demonstrate the potential to become knowledge experts and can contribute significantly to research, teaching and innovations in science and engineering.

The award provides funding for \$30,000 a year for three years that can be used over a five year period. This award will begin at the end of his current BD award.

Justin Lewis, LSAMP Scholar, was a 2006 recipient of the Minority Access Incorporated Role Model Award at the Seventh National Conference in Las Vegas, Nevada on September 19, 2006.

All Nations

Tribal College students placed in the National American Indian Science & Engineering Society (AISES) Conference. Josh Marceau, Salish Kootenai College, took first place in Oral with his presentation, "*Reverse Transcriptase from Feline Immunodeficiency Virus.*" Second place in Oral went to Kevin Ellis, Oglala Lakota College, with his presentation, "*Aqueous Extraction of Bitter Melon & Effect on Diabetic Animal Models.*" In the Poster competition Deidra Brum, Salish Kootenai College, captured second place with her presentation entitled, "*Protective Antigen Expression from an Anthrax Toxin.*"

California

UCLA LSAMP students Mikael Guzman, Jason Lin, Daniel Krauth, and Lorillee Tallorin won Best Poster Awards for Biology/Neurobiology at the 2006 SACNAS national conference in Tampa, Florida. Additionally, UCI's Courtney Salinas and Aide Soria won Best Posters for Biology and Daniela Dunams won Best Poster Award for Marine Biology, presented by Scripps Institution of Oceanography, all at SACNAS.

UC Berkeley LSAMP students Franklin Dollar (Engineering/Physics) and Victoria Angel (Mathematics), each won the Blue Ribbon for Superior Poster Presentation from Sigma Xi. The recognition included ribbons and cash. In addition, the UC Berkeley Chapter Sigma Xi was recognized for their diversity program.

Colorado

Trinidad State Hispanic CO-AMP biology research intern

22 *Louis Stokes Alliances for Minority Participation*

Chris Blocker was a co-author on research winning a third place award in the Ecology Division at the TriBeta National Biennial Biology Conference, held this past summer at Melbourne, Florida. Chris presented earlier versions of this research at the Colorado Diversity Forum in Denver and at the Regional TriBeta Conference at Socorro, NM. Chris especially enjoyed meeting with Dr. Hicks at the Diversity Forum.

Florida-Georgia

Tony Price, Ph.D. student, Electrical Engineering - NSF Graduate Research Fellowship - McKnight Doctoral Fellowship - Sloan Minority Ph.D. Fellowship

Quenton Bonds, Ph.D. student, Electrical Engineering - NASA Harriett Jenkins Doctoral Fellowship - McKnight Doctoral Fellowship

Camille Daniels, Ph.D. Student, Biological Oceanography McKnight Doctoral Fellowship - Joint Oceanographic Institute Fellowship (JOI)

Regina Easley, Ph.D. student, Chemical Oceanography - Alfred P. Sloan Minority Ph.D. Fellowship

Luis Rivera, Ph.D. student, Chemical Engineering - GEM Ph.D. Fellowship

Marietta Mayo, Ph.D. student, Chemical Oceanography - Alfred P. Sloan Minority Ph.D. Fellowship - NSF GK-12 Fellowship

Warner Ithier-Guzman, Ph.D. student, Chemical Oceanography - NSF GK-12 Fellowship

Joniqua Howard, Ph.D. student, Environmental Engineering - NSF GK-12 Fellowship - Alfred P. Sloan Minority Ph.D. Fellowship

Erlande Omisca, Ph.D. student, Environmental Engineering - McKnight Doctoral Fellowship - Alfred P. Sloan Minority Ph.D. Fellowship

Brandon Henry, Ph.D. student, Biomedical Engineering - Ford Foundation Pre-Doctoral Fellowship Program (Honorable Mention Recognition)

Erick Maxwell, Ph.D. candidate, Electrical Engineering - UNCF/MERCK Graduate Dissertation Fellowship

Dorielle Tucker Price, Ph.D. student, Electrical Engineering - NSF Graduate Research Fellowship - Ford Foundation Pre-doctoral Fellowship - McKnight Doctoral Fellowship

Illinois

Deborah Amos of Chicago State University was one of fifteen undergraduate recipients of the 2006 UNCF•Merck Science Initiative award. As an UNCF•Merck Fellow, she has received a full academic scholarship and will spend her summers conducting research at Merck Research Laboratories in Rahway, NJ.

Myles Singleton of Illinois State University was recognized at The National Black Data Processors Association Conference, Anaheim, CA, August 2-5, 2006, as third place winner in the IT showcase competition. He also received a crystal trophy during the final award ceremony.

Nadia Lopez of Southern Illinois University at Carbondale was the recipient of a 2006 REACH award to conduct research in Callitrichid primate behaviors at Brookfield and Lincoln Park Zoos in Chicago, IL.

Louisiana

In the aftermath of Hurricane Katrina (August 29, 2005), the University of Iowa (UI) mobilized efforts to ensure that the education of students from the Gulf Coast would not be interrupted. As a result, 11 displaced students from three New Orleans Historically Black Colleges and Universities were enrolled at UI. Collective efforts of UI's administrators secured an estimated \$100,000 to fully support these 11 scholars. The 11 displaced students received furnished apartments, full tuition scholarships, stipends, extensive mentoring (including tutoring) and other forms of support.

More Graduate Education at Mountain States Alliance (MGE@MSA), led by Dr. Albert McHenry and the Western Alliance to Expand Student Opportunities (WAESO), led by Dr. Antonio A. Garcia, financially and otherwise supported 176 Louisiana STEM students and 40 faculty members to participate in their annual Student Research Conference at ASU. This action of the above alliances and of ASU, at the cost estimated at \$195,000, gave a true meaning to the term "LSAMP Family."

Michigan

In March 2006, the National Society of Black Engineers, University of Michigan Chapter, was awarded the "Distinguished Chapter of the Year."

Mid Eastern

Jamille Robinson, Biochemistry and Chemistry Senior at Virginia Tech won an award in the oral presentation division at the Annual Biomedical Research Conference for Minority Students (ABRCMS) in Anaheim, California.

Jerome Mitchell, a computer science major at Elizabeth City State University, flew to McMurdo Station, Antarctica, for a six week research project on global warming spon-

sored by the National Science Foundation.

Gi'Eira Jones, a sophomore majoring in biology at Elizabeth City State University, is the recipient of a \$20,000 scholarship from the National Institute of Health.

Gregory Okotie attended the Minority Access, Inc. 8th National Role Model's Conference in Las Vegas on September 17-20. He participated in the research competition and placed #2 out of three awards given.

Samantha Casterlow, a senior Chemistry major at Virginia Union University, attended the New Mexico LSAMP Student Conference in Las Cruces, New Mexico and tied third in the oral presentation category.

Mississippi

Tomekia Simeon was elected for the student delegation to the annual meeting of Nobel Laureates Lindau, Germany, June 25-30, 2006, and the Modeling and Design of Molecular Materials Workshop, Wroclaw, Poland, September 16-20, 2005. Najealicka Armstrong, Erika Brown and Charity Mosley presented their research at the 9th International Symposium on Metal Ions in Biology and Medicine, Lisbon, Portugal, May 21-24, 2006.

Angela Fortner and Jelani Griffin were selected to attend the International Center for Young Scientists-International Center for Materials Research Summer School 2006 on Nanomaterials, Namiki, Japan, July 21-28, 2006.

New Mexico

Bridge to the Doctorate student Sarah Gibson, an organic chemistry major, was awarded a 2006 National Science Foundation Graduate Research Fellowship Award. Sarah received her B.S. in Chemistry from New Mexico State University in 2004. After completion of her Ph.D., her goal is a career as an organic chemistry professor.

Danielle Miranda, a transfer student from New Mexico State University-Alamogordo Branch and a 2005 Summer Community College Opportunities for Research Experiences (SCCORE) participant, spent her 2006 summer doing a research internship at the Fred Hutchison Cancer Research Center in Seattle, Washington. Danielle worked with Dr. Irene King doing research in "The Evaluation of Gene Expression in Buccal Cells."

New York City

Carlos Silvera Batista (Bridge to the Doctorate Scholar at the City College) received a doctoral fellowship to pursue a Ph.D. at the University of Florida in chemical engineering. Carlos co-authored an article entitled "Two-dimensional Micro- and Nanoparticle Monolayer Films," slated for publication in a refereed journal and selected for an oral

presentation at the Junior Scientist Conference 2006 in Vienna, Austria. In addition, he presented his research at the Nanoscale Science and Engineering Center (NSCE) annual meeting in April of 2006.

Yisa Rumala (Bridge to the Doctorate Scholar at York College) received a NSF Graduate Research Fellowship to pursue his doctoral studies in Physics at the University of Michigan.

Moses Feaster (Undergraduate LSAMP Scholar at Brooklyn College) received a NSF Graduate Research Fellowship to pursue his doctoral studies in Biology at Columbia University.

North Carolina

Sean Johnson and David Murphy, senior electrical engineering majors at North Carolina A&T State University, won first place in oral presentations at the 2006 National HBCU-UP Conference in Baltimore, Maryland.

Eric Echols, senior biology major and Marcus Marley, a senior mechanical engineering major were awarded NSF Bridge to the Doctorate Fellowships to attend the University of South Florida.

Jamil Grant, a senior mechanical engineering major, was elected president of the student chapter of the American Society of Mechanical Engineers at North Carolina A&T State University.

Husniyah Abdus-Salaam, a Bridge to the Doctorate Fellow at the University of North Carolina at Charlotte, served as a graduate panelist at the 2006 Annual LSAMP Conference in Greensboro, NC.

Northeast

Greisy Cabrera, University of Massachusetts Amherst junior, was awarded a travel grant from SACNAS (Society for the Advancement of Chicanos and Native Americans in Science) to present her work.

Laury Lucien, University of Massachusetts Amherst junior, won a summer fellowship from the National Endocrine Society.

Winnie Nabea, Worcester Polytechnic Institute first year student, was the September Member of the Month at the NSBE (National Society of Black Engineers) Regional Conference for the New England Region.

Maria Jacob, University of Connecticut, won third place at the New Mexico National LSAMP Conference for her presentation about her research on board the National Oceanic and Atmospheric Administration's vessel the *Albatross*.

Ohio

In 2006, Keith Coleman, civil engineering major at Ohio State, was awarded the NSF Graduate Research Fellowship, which provides a stipend of \$30,000 per year for three years. He will be attending graduate school at MIT in the fall.

Peach State

Fort Valley State University PLSAMP Scholar Kesha McRae discovered a new strain of nematode in her research conducted with Dr. George Mbata. The project was titled: "The Susceptibility of Indianmeal Moth Adults and Larvae to Different Strains of Nematodes."

University of Georgia PLSAMP Scholar Oluwamuye Felix Akinbote was named a 2006 Merage American Dream Fellow which will support his first two years of medical school.

Philadelphia

For the third straight year, a Delaware State University student has won the prestigious Alonzo Crim Student Award for Excellence in Mathematics and Science from the QEM/MSE Network. The 2006 winner was Adaora Ik-wuagwu, a senior chemistry major who is graduating with distinction. The award was presented at the Fifteenth Annual National Conference of the QEM Mathematics, Science, and Engineering Network held in Washington, D.C. on February 24-25, 2006.

South Carolina

Aundrie Blanchard and Patricia Glenn became the first minority students at South Carolina State University and the first minority females in the state of South Carolina and the nation to receive B.S. degrees in nuclear engineering.

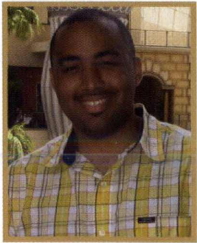
Melanie Sheppard from Claflin University was awarded a MERCK/UNCF Undergraduate Science Research Program Scholarship.

Sharene Patterson from Voorhees College was admitted to the Bridge to the Doctorate Program in microbiology at Howard University Fall 2006.

State University of New York

Edwardo Sosa, University at Albany, recipient of the Barry M. Goldwater Scholarship.

Tennessee



Fredrick Hilliard, a senior biomedical engineering student at Vanderbilt University won first place in the 2005 National Society of Black Engineers' Regional Undergraduate Technical Research Competition.

Fredrick Hilliard

Texas A&M University System

The TAMUS LSAMP 2nd Annual Mini-Symposium was held in conjunction with the TAMUS Pathways Symposium on the campus of Texas A&M University – Kingsville. TAMUS LSAMP students and BTD Fellows participated in both conferences and interacted with a number of distinguished guests, such as Anthony Harris, entrepreneurial and founder of the National Society of Black Engineers.

TAMUCC LSAMP completed another successful Sigma Xi Distinguished Lecture and Undergraduate Research Symposium. There were 18 student poster presentations, all of high quality. The annual research symposium was established so that undergraduate students doing research have an opportunity to present their work prior to presenting at state, regional, national and international conferences.



Sigma Xi Research Symposium Participants

University of Texas System

Jenny Tompkins, mathematics major at the University of Texas at Tyler, had her LSAMP research, "How DNA and Knot Theory do the Tangle", published in a scientific journal.

University System of Maryland

The following recipients of Goldwater Scholarships were enrolled at USM LSAMP institutions during the 2005-2006 academic year:

Michael T. Aaron, University of Maryland, Baltimore County, Major(s): Mechanical Engineering

Devin E. Burns, University of Maryland, Baltimore County, Major(s): Mechanical Engineering

Kristina M. Cammen, University of Maryland, College Park, Major(s): Biology/Psychology

Timothy R. Dulaney, University of Maryland, College Park, Major(s): Physics/Mathematics

Andrew S. Kohlway, University of Maryland, Baltimore County, Major(s): Bioinformatics

Lauranne Lanz, University of Maryland, College Park, Major(s): Physics/Astronomy

Eric I. Newman, University of Maryland, College Park, Major(s): Biochemistry

Stephanie M. Nunez, University of Maryland, Baltimore County, Major(s): Biochemistry/Molecular Biology

Adjoa R. Smalls-Mantey, University of Maryland, Baltimore County, Major(s): Biochemistry/Molecular Biology

Suji Uhm, University of Maryland, College Park, Major(s): Cell & Molecular Biology/Genetics

Washington/Baltimore/Hampton Roads

In the summer of 2006 Chris Agard, of Howard University, assisted Dr. George Middendorf in a study of a proscribed (deliberately set) forest fire in Southeastern Arizona at the Chiricahua National Monument. The effects were examined in populations of Yarrow's spiny lizard, *Sceloporus jarrovi*, a species of lizard that frequents rocky canyons and sprints up the vertical canyon walls to chase rivals and mates, as well as to escape predators.

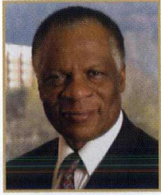
On March 29-April 2, 2005, The National Society of Black Engineers (NSBE) held its 32nd National Conference in Pittsburgh, PA. Activities included: a career fair with more than 300 corporations, government agencies, and academic institutions and a College and Graduate School Fair. The conference served as a major recruitment tool for participating universities by offering a collegiate recruitment fair.

The Mathematics Enhancement and Research Institute was held at the University of District of Columbia-Van Ness Campus from October 15, 2005 - June 29, 2006. The Institute was designed for university or college students who had completed their first, second or third year of academic studies in pursuit of an undergraduate degree in engineering, computer science, mathematics, biology, environmental science, physics or chemistry.

LSAMP Award History

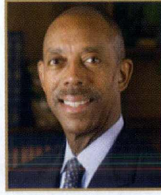
1991

Alabama



Dr. Louis Dale
The University of
Alabama at
Birmingham

California



Dr. Michael V. Drake
University of California,
Irvine

Mississippi



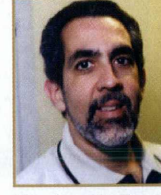
Dr. James Perkins
Jackson State University

Puerto Rico



Dr. Manuel Gomez
University of Puerto Rico

WAESO



Dr. Antonio Garcia
Arizona State University

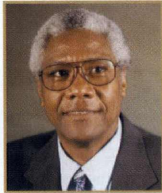
Texas A&M



Dr. Karan Watson
Texas A&M University

1992

Florida- Georgia



Dr. Ralph W. Turner
Florida A&M University

New York City



Dr. Neville A. Parker
City College of
New York

North Carolina



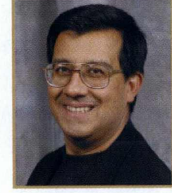
Dr. Janice Brewington
North Carolina A&T State
University

South Carolina



Dr. Andrew Hugine, Jr.
South Carolina State University

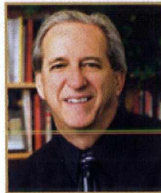
University of Texas System



Dr. Benjamin Flores
The University of Texas
at El Paso

1993

California State



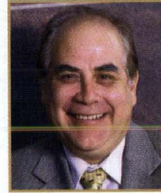
Dr. Joseph Sheley
California State
University,
Sacramento

Illinois



Dr. Marian Wilson Comer
Chicago State University

New Mexico



Dr. William V. Flores
New Mexico State University

Washington/Baltimore Hampton Roads



Dr. Richard A. English
Howard University

1994

All Nations



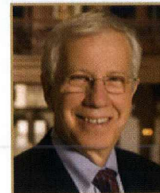
Dr. Joseph F. McDonald
Salish Kootenai College

Oklahoma State



Dr. Earl Mitchell
Oklahoma State University

Greater Philadelphia Region



Dr. Stephen W. Director
Drexel University

1995

Louisiana



Dr. Diola Bagayoko
Southern University
and A&M College

Missouri



Dr. Charles Sampson
University of Missouri-Columbia

**University System
of Maryland**



Dr. Freeman Hrabowski
University of Maryland
Baltimore County

Tennessee



Dr. Melvin N. Johnson
Tennessee State University

1996

Colorado



Dr. Omnia El-Hakim
Colorado State University

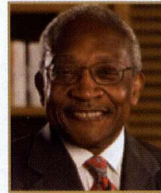
SUNY



Dr. David Ferguson
State University of
New York-Stony Brook

1997

Georgia



Dr. Walter D. Broadnax
Clark Atlanta University

1998

Houston



Dr. John Bear
University of Houston

2001

Mid-Eastern



Dr. Belinda Anderson
Virginia Union University

Northeast



Dr. John Cunningham
The University of
Massachusetts Amherst

Pacific



Dr. Herb Schroeder
University of
Alaska Anchorage

2002

Indiana



Dr. Sally K. Mason
Purdue University

2003

Ohio



Dr. Karen A. Holbrook
Ohio State University

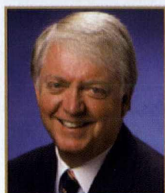
2004

Michigan



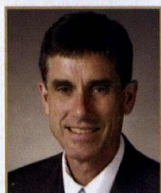
Dr. Mary Sue Coleman
University of Michigan

Peach State



Dr. Michael Adams
The University of Georgia

Wisconsin



Dr. Patrick Farrell
University of
Wisconsin-Madison

2006

**Islands of
Opportunity**



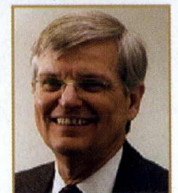
Dr. Rose Tseng
University of Hawaii
at Hilo

**Kentucky-
West Virginia**



Dr. Lee T. Todd
University of Kentucky

**Urban
Massachusetts**



Dr. Paul Fonteyn
University of
Massachusetts Boston

Alabama Louis Stokes Alliance for Minority Participation



To provide academic and financial support programs designed to significantly increase the quality and quantity of underrepresented minority students completing baccalaureate degrees in science, technology, engineering and mathematics (STEM) fields.



ACTIVITIES AND PROGRAMS



2007 Annual Spring Research Conference

- Undergraduate Scholarship Program
- Peer and Faculty Mentoring
- Community College Collaboration
- Graduate School Preparation
- Career Fair and Advisement
- Faculty Mentored Research
- Student Participation in Professional Conferences and Seminars
- Bridge to Teaching Program
- ALSAMP Governing Board
- Peer Study Groups
- Summer Internship Program
- Summer Bridge Program for Entering Freshmen

Dr. Louis Dale,
Principal Investigator
(205) 934-8762
ldale@uab.edu

PARTNER INSTITUTIONS

The University of Alabama at Birmingham
Lead Institution
Dr. Carolyn Braswell
(205) 934-8762
cbraswel@uab.edu

Alabama A&M University
Dr. Jacqueline Johnson
Dr. Jerry R. Shipman
(256) 372-5173
jau.johnson@email.aamu.edu

Alabama State University
Dr. Wallace Maryland Jr.
(334) 229-4464
wmaryland@alasu.edu

Auburn University
Dr. Overtoun M. Jenda
(334) 844-4184
jendaov@auburn.edu

Miles College
Dr. Charles C. Woods
(205) 929-1551
cwoods@miles.edu

Oakwood College
Dr. Kenneth LaiHing
(256) 726-7112
laihing@oakwood.edu

Stillman College
Dr. Marjorie Campbell
(205) 366-8914
mcampbell@stillman.edu

Talladega College
Dr. Leonard Cole
(256) 761-6300
lcole@talladega.edu

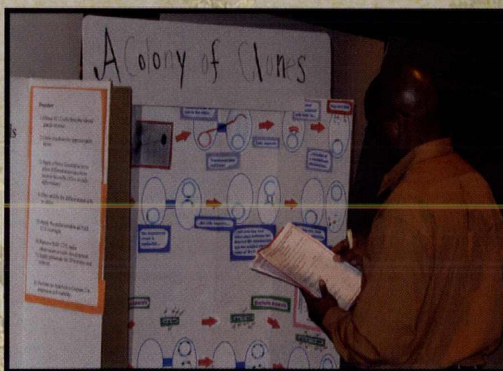
Tuskegee University
Dr. Shaik Jeelani
Dr. Herman Windham
(334) 727-8970
jeelani@tuskegee.edu

The University of Alabama
Dr. Viola L. Acoff
(205) 348-3761
vacoff@eng.ua.edu

The University of Alabama in Huntsville
Dr. Adriel D. Johnson, Sr.
(256) 824-6235
johnsona@email.uah.edu

The University of South Alabama
Dr. Carl Cunningham, Jr.
Dr. Alexandra Stenson
(251) 460-6895
ccunningham@usouthal.edu

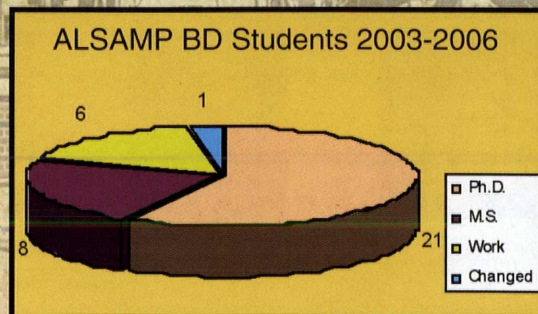
RESEARCH



Research projects being evaluated.

BRIDGE TO THE DOCTORATE

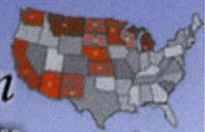
Since 2003, thirty-six students have entered BD cohorts at Auburn University, University of Alabama in Huntsville and The University of Alabama at Birmingham. In fall 2006, Tuskegee University accepted 12 additional students, bringing the ALSAMP total to 48.



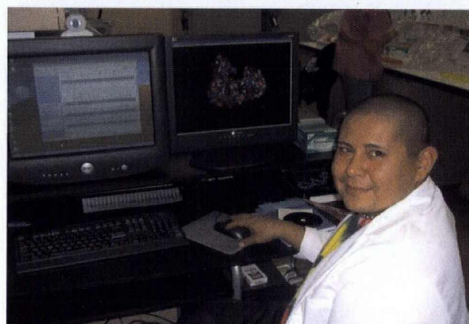


All Nations Louis Stokes Alliance for Minority Participation

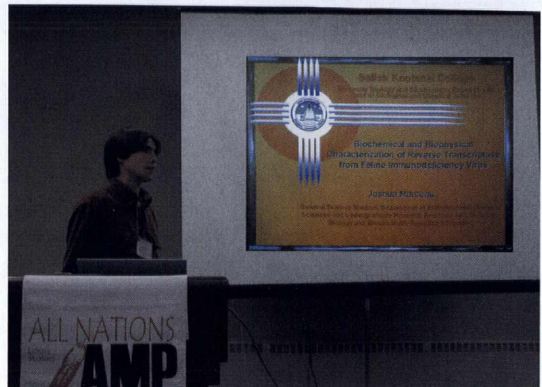
Indigenous Math and Science Institute at Salish Kootenai College, Pablo Montana 59855



The All Nations Louis Stokes Alliance for Minority Participation (ANLSAMP) is working to achieve parity with other minority groups to meet the needs of the tribal communities we serve. ANLSAMP has 52 alliance partners. Our partners consist of 25 universities and four-year colleges and 27 tribal colleges offering two-year degrees.



SKC Student finishing data collection for 2006 AISES National Conference

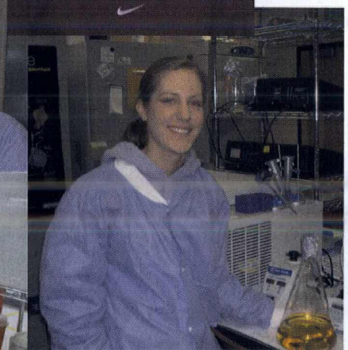
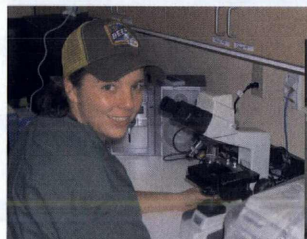


Joshua Marceau, Science student at SKC, presenting at the 2006 AISES National Conference undergraduate research oral competition

Zetra Wheeler
Principal Investigator
All Nations LSAMP
Salish Kootenai College
PO Box 70
52000 Highway 93
Pablo, Montana 59855
Phone: (406) 275-4800
Fax: (406) 275-4807
www.anamp.org

Four Year Alliance Partners

- Central Michigan University
- Haskell Indian Nations University
- Heritage University
- Institute of American Indian Arts
- Lake Superior State College
- Montana State University - Bozeman
- Montana State University - Northern
- North Dakota State University
- Oglala Lakota College
- Rocky Mountain College
- Salish Kootenai College
- Sinte Gleska University
- South Dakota School of Mines & Technology
- South Dakota State University
- The Evergreen State College
- University of Kansas
- University of Minnesota - Duluth
- University of Minnesota - Twin Cities
- University of Montana
- University of North Dakota
- University of South Dakota
- University of Washington
- University of Wisconsin
- Washington State University
- Western Washington University



ANLSAMP tribal college students conducting research and finalizing presentations for 2006 AISES Conference

SCIENCE • TECHNOLOGY • ENGINEERING • MATHEMATICS

CALIFORNIA LSAMP PARTNERS

UC BERKELEY

GEORGE C. JOHNSON, PH.D.
FACULTY DIRECTOR
Professor, Mechanical Engineering
gjohnson@me.berkeley.edu

DIANA LIZARRAGA
COORDINATOR
UC LEADS Program Director
ladiana@berkeley.edu

UC DAVIS

GARY E. FORD, PH.D.
FACULTY DIRECTOR
Associate Dean and Professor
College of Engineering
ford@ece.ucdavis.edu

RENEE MALDONADO
COORDINATOR
UC Davis MESA Center
College of Engineering Dean's Office
rjmaldonado@ucdavis.edu

UC IRVINE

DEREK DUNN-RANKIN, PH.D.
FACULTY DIRECTOR
Department of Mechanical and
Aerospace Engineering
ddunnran@uci.edu

KIKA FRIEND
COORDINATOR
107 Rockwell Engineering Center
kika@uci.edu

UC LOS ANGELES

RICHARD L. WEISS, PH.D.
FACULTY DIRECTOR
Department of Chemistry and
Biochemistry
weiss@chem.ucla.edu

LAINA LONG
COORDINATOR
CARE Center
lainal@lifesci.ucla.edu

UC RIVERSIDE

MICHAEL MARSELLA, PH.D.
FACULTY DIRECTOR
Department of Chemistry
michael.marsella@ucr.edu

JO-ANN HEICK
COORDINATOR
Department of Chemistry
joannh@ucr.edu

UC SAN DIEGO

DAVID M. ARTIS, PH.D.
PROGRAM DIRECTOR
Academic Enrichment Programs
dartis@ucsd.edu

JACQUIE AZIZE-BREWER, PH.D.
COORDINATOR
Academic Enrichment Programs
jazize@ucsd.edu

UC SANTA BARBARA

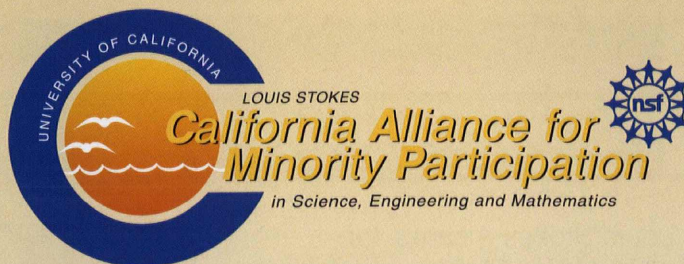
GLENN EL BELTZ, PH.D.
FACULTY DIRECTOR
College of Engineering
beltz@engineering.ucsb.edu

DOROTHY PAK, PH.D.
COORDINATOR
Research Scientist
Department of Geological Sciences
pak@mrl.ucsb.edu

UC SANTA CRUZ

A. RUSSELL FLEGAL, PH.D.
FACULTY DIRECTOR
Division of Physical and
Biological Sciences
flegal@etox.ucsc.edu

MALIKA BELL
COORDINATOR
Thimann Labs
malika@biology.ucsc.edu



UC Davis is proud to host
Bridge to the Doctorate,
Cohort IV, supporting 12
minority fellows in STEM
graduate programs.
Cohort I: UCLA
Cohort II: UCI
Cohort III: UCSD

CALIFORNIA LSAMP

The University of California Irvine, Lead Campus

UC systemwide has achieved a 96% increase in minority STEM enrollment and an 110% increase in minority B.S. degrees granted since base year (1991), with 1,292 B.S. degrees granted in 2005.

The Annual Undergraduate Research Symposium convenes UC STEM faculty and students from our 8 partner UC campuses. Special Merit in Research Awards are made by UC faculty. Students gain a competitive academic profile through mentored research experiences, which provide an early introduction to the culture of the research laboratory. Working with faculty and a research team of graduate students and postdoctoral fellows also builds confidence and leadership. The opportunity to interact with faculty and scientists in the discipline both enriches and encourages a smooth transition to graduate school and/or the STEM workforce. Undergraduate research contributes to LSAMP goals of sustaining minority STEM enrollments and degree completion rates, as well as builds a pipeline for the Bridge to the Doctorate supplemental activity.



email: camp@uci.edu • www.california-lsamp.uci.edu



CAMP STATEWIDE LEADERSHIP

Michael V. Drake, M.D., Chancellor, UC Irvine, P.I.

Nicolaos Alexopoulos, Dean, Henry Samueli School of Engineering, Co-P.I.

Debra J. Richardson, Dean, Bren School of Information and Computer Science, Co-P.I.

Juan Francisco Lara, Assistant Vice Chancellor, Executive Director, Lara@uci.edu
Marjorie DeMartino, Associate Executive Director, dmartino@uci.edu



CALIFORNIA LSAMP

California State University Louis Stokes Alliance for Minority Participation

CSU-LSAMP Alliance - Campus Coordinators

CSU Bakersfield - Javier Trigos-Arrieta
(661) 664-2031 • jtrigos@csub.edu

CSU Chico - Lori Holcombe
(530) 898-4175 • lholcombe@csuchico.edu

CSU Dominguez Hills - Wai Yan Pong
(310) 243-2443 • wpong@csudh.edu

CSU East Bay - Saeid Motavalli
(510) 885-2654 • saeid.motavalli@csueastbay.edu

CSU Fresno - Lilia de la Cerda
(559) 278-4748 • liliad@csufresno.edu

CSU Fullerton - Ernie Solheid
(714) 278-7023 • esolheid@fullerton.edu

Humboldt State - Jacob Varkey
(707) 826-4164 • jpv1@humboldt.edu

CSU Long Beach - Morteza Ebneshrashoob
(562) 985-5625 • mortezae@csulb.edu

Cal State Los Angeles - Margaret Jefferson
(323) 343-2059 • mjjeffer@exchange.calstatela.edu

CSU Monterey Bay - William Head
(831) 582-3576 • william_head@csUMB.edu

CSU Northridge - Karla Johnson-Majedi
(818) 677-2191 • kjm@csun.edu

Cal Poly Pomona - Eric Lara
(909) 869-2482 • ericlara@csupomona.edu

CSU Sacramento - Juanita Barrera
(916) 278-6519 • jbarrena@csus.edu

CSU San Bernardino - Belisario Ventura
(909) 537-5406 • bventura@csusb.edu

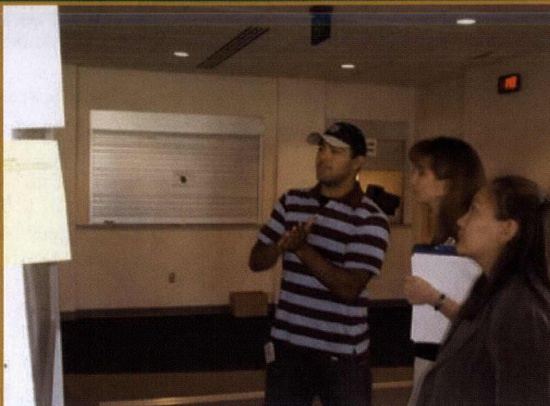
San Diego State - Estralita Martin
(619) 594-4009 • esmartin@sciences.sdsu.edu

San Francisco State - David Ellis
(415) 338-1026 • dellis@math.sfsu.edu

San Jose State - Karen Singmaster
(408) 924-4980 • singmast@aol.com

Sonoma State - Samuel Brannen
(707) 664-2591 • brannen@sonoma.edu

CSU Stanislaus - Jane Bruner
(209) 667-3476 • bruner@csustan.edu

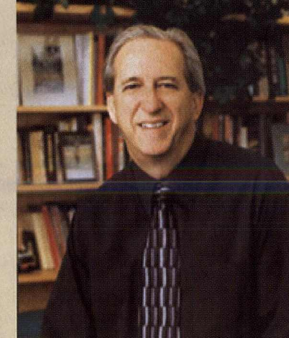


Initiated in 1994, with support from the National Science Foundation, the California State University-Louis Stokes Alliance for Minority Participation (CSU-LSAMP) Program is a comprehensive state-wide project dedicated to increasing the number of students from underrepresented minority groups (URM) graduating from campuses of the California State University with baccalaureate degrees in science, technology, engineering, and mathematics (STEM) disciplines. The CSU-LSAMP Alliance consists of 19 campuses of the California State University (CSU), each of which is partnered with at least one California Community College (CCC).

In 2005-2006, 2,979 "level 1" undergraduate students were enrolled in campus-based CSU-LSAMP programs. Based on self-identification of race/ethnicity and major, the 2,979 "level 1" students included 2,881 URM-STEM students, 22 URM non-STEM students and 76 non-URM/STEM students.

CSU-LSAMP also supported the second year of an Alliance-wide initiative referred to as the CSU-LSAMP Scholars Program. The Scholars Program is an Alliance-wide program initiated in 2004-2005, which provides special state-wide recognition and support to exceptionally promising upper division students who demonstrate an interest in pursuing graduate study in STEM.

Additionally, in 2005-2006, CSU-LSAMP supported two Bridge to the Doctorate (BD) Supplemental Activities: the second year of a BD-Cohort II Supplemental Activity and the first year of a BD-Cohort III Supplemental Activity.



Joseph Sheley, Ph.D., PI
Provost and Vice President for
Academic Affairs
California State University, Sacramento

California's economic success tomorrow depends upon its ability today to prepare students for productive careers in STEM (Science, Technology, Engineering, and Math) fields, the heart of the global economy. The CSU is working for California through CSU-LSAMP.

Undergraduates from underrepresented minority groups are working with some of the very best faculty members from 19 CSU campuses, preparing for graduate study in STEM disciplines. They will go on to productive careers and, as importantly, they will inspire others from diverse backgrounds to follow in their footsteps. CSU students, moving California forward, are a source of great pride for their campuses.
- Joseph Sheley, Ph.D.



Juanita Barrera, Ph.D., Co-PI
Professor of Biological Sciences
California State University, Sacramento



Nicole Campos, Project Manager
CSU-LSAMP Program
California State University, Sacramento

CSU-LSAMP Statewide Office
California State University,
Sacramento

6000 J Street, Sequoia Hall 534
Sacramento, CA 95819-6124
Phone: (916) 278-3838
Fax: (916) 278-3854
www.csus.edu/csu-lsamp

LOUIS STOKES COLORADO-AMP

linking diverse students to educational opportunities in science, technology, engineering, and mathematics

LS CO-AMP SERVES STUDENTS in Colorado and the Four Corners Region. Our goal is to increase undergraduate and graduate degree production in STEM areas. LS CO-AMP places emphasis in the following areas:

- Recruitment
- Summer Bridge Programs
- Leadership/Retention
- Graduation of LS CO-AMP Seniors
- Bridge to the Doctorate
- Tracking
- Graduate School Placement
- National Conferences

LS CO-AMP PARTNER INSTITUTIONS & SITE COORDINATORS

- ♦ **Adams State College**
Mike Garcia, 719/587-7865
dmgarcia@adams.edu
- ♦ **AIMS Community College**
Damion Cordova, 970/339-6656
Damion.cordova@aims.edu
- ♦ **Colorado State University**
Arlene Nededog, 970/491-2036
Arlene.Nededog@colostate.edu
- ♦ **Colorado State University - Pueblo**
Dr. Jane Fraser, 719/549-2036
jane.fraser@colostate-pueblo.edu
- ♦ **Colorado School of Mines**
Khanh W. Vu, 303/273-3021
kvu@mines.edu
- ♦ **Diné College**
Clarissa Bowman, 505/368-3555
cnbowman@dinecollege.edu
- ♦ **Fort Lewis College**
Dr. Don May, 970/247-7545
May_d@fortlewis.edu
- ♦ **Metropolitan State College**
Dr. Larry Johnson, 303/556-5106
johnsonl@mscd.edu
- ♦ **Pueblo Community College**
Dennis Trujillo Johnson, 719/549-3035
Dennis.Johnson@puebloc.edu
- ♦ **Trinidad State Junior College**
Carol Rankin, 719/846-5670
Carol.Rankin@trinidadstate.edu
- ♦ **University of Colorado – Boulder**
Anthea Johnson-Roen, 303/492-4276
anthea.johnson@colorado.edu
- ♦ **University of CO - Colorado Springs**
Tina Moore, 719/262-3347
tmoores@engineering.uccs.edu
- ♦ **University of Colorado – Denver**
Dr. Paul Encinias, 303/556-2777
pencinias@carbon.cudenver.edu
- ♦ **TRIBAL PARTNERS**
Jicarilla Apache Tribe – Elizabeth Muniz
Navajo Nation – Rose Grahame
Southern Ute Tribe – LaTitia Taylor
Ute Mtn. Ute Tribe – Robert Galin

Louis Stokes Colorado Alliance for Minority Participation
Serving Colorado and the Four Corners Region



LS CO-AMP KEY PERSONNEL



Dr. Larry E. Penley
COAMP Governing Board Chair
CSU President & Chancellor of CSU Svstems



Dr. Omnia El-Hakim
Principal Investigator & Director
CSU – Fort Collins

Omnia El-Hakim, Ph.D.
Executive Director of Diversity Recruitment and Retention
Graduate School, Engr. Bldg. #118
Fort Collins, CO 80523-1301
(970) 491-2656 (CSU) Fax 491-3421
(970) 222-1043 (Cell)
omnia@colostate.edu

Elaine Green, Ed.D.
Program Coordinator
Graduate School, Engr. Bldg E116
Fort Collins, CO 80523-1301
(970) 491-2898
Elaine.Green@colostate.edu

Cheri Christensen, Office Manager
(970) 491-2978
cherich@colostate.edu

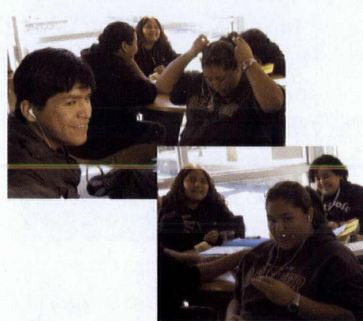
MANAGEMENT TEAM

David Aragon, Ph.D.
University of Colorado – Boulder

Hector Carrasco, Ph.D.
Colorado State University – Pueblo

Peter Dorhout, Ph.D.
Colorado State University-Fort Collins

Larry Johnson, Ph.D.
Metropolitan State College of Denver



Top 3 Accomplishments:

- Centralizing all State diversity programs in the Provost's Office
- Promoting international initiatives for CO AMP students in Colorado
- Institutionalization

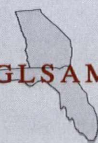


WWW.COAMP.COLOSTATE.EDU



FGLSAMP

FGLSAMP



The Florida – Georgia LSAMP is “making strides of accomplishment” through its effort to bridge the gap between underrepresented minorities (URM) receiving STEM baccalaureate degrees and those pursuing STEM graduate degrees.

Our mission is to significantly increase the number of STEM B.S. degrees awarded to URM populations, however FGLSAMP is also charged with encouraging, assisting and creating opportunities for our B.S. degree recipients to pursue STEM graduate degrees. Through funding provided by the State of Florida Legislature and the NSF –Bridge to the Doctorate program, FGLSAMP has been able to provide significant funding support for students enrolled in STEM graduate degree programs.

The success of FGLSAMP is founded in a holistic approach to student development. Our focus and emphasis in making strides of accomplishment rest upon three pillars:

- **Progression**

- > Enhanced academic preparation and performance

- **Persistence**

- > High student retention in STEM disciplines

- **Graduation**

- > Maintain student within the academic pipeline through to graduation
- > Preparation for STEM graduate degree programs upon graduation

FGLSAMP is a collaboration of 13 institutions of higher education, within the states of Florida and Georgia. Florida A&M University serves as the lead institution for FGLSAMP.

FGLSAMP Central Office
1540 S. Adams Street, Suite A
Tallahassee, FL 32307

(850) 561-2467

www.fglsamp.com

Ralph Turner, Project Director
Byron Greene, Manager

FGLSAMP Institutions

Florida A&M University (Lead)

Albany State University

Florida International University

Miami-Dade College

University of Miami

Bethune-Cookman College

Florida Memorial College

University of Central Florida

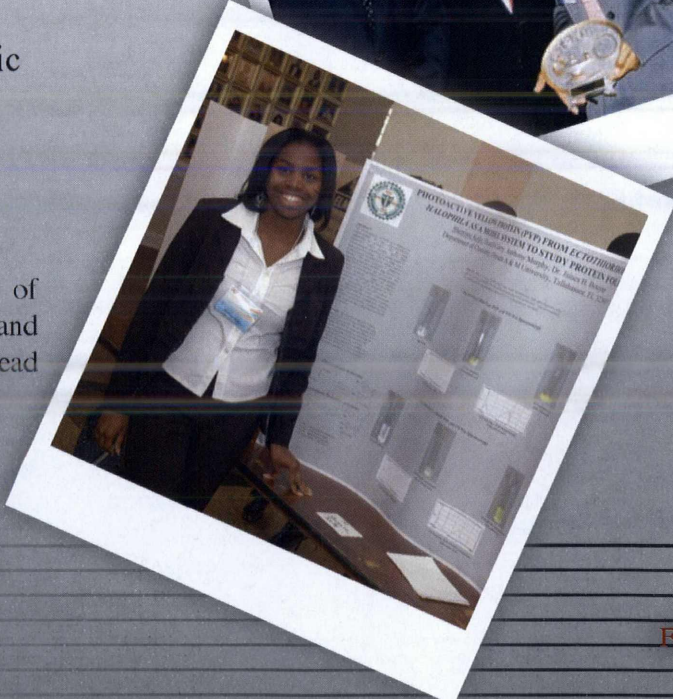
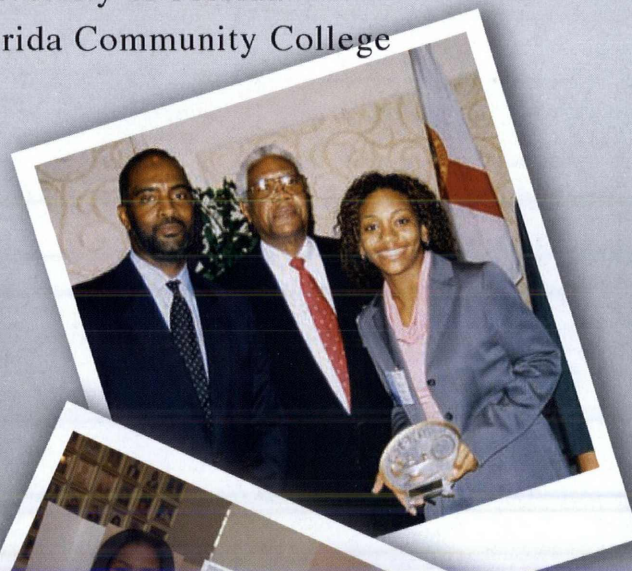
University of South Florida

Tallahassee Community College

Florida State University

University of Florida

Florida Community College



FGLSAMP





THE GEORGIA LOUIS STOKES ALLIANCE FOR MINORITY PARTICIPATION PROGRAM

THE GALSAMP CENTRAL OFFICE

DR. MELVIN R. WEBB
PROGRAM DIRECTOR
CLARK ATLANTA
UNIVERSITY
223 JP BRAWLEY DR.
P.O. BOX 1980
ATLANTA, GA 30314
404-880-6978

PARTICIPATING INSTITUTIONS

Clark Atlanta University
Dr. I. Finkelstein, PI

Georgia State University
Dr. A. Bumstark, PI

Morehouse College
Dr. J. K. Haynes, PI

Spelman College
Dr. R. Jones, PI

Paine College
Dr. R. Kessler, PI

Atlanta Metropolitan
College
Dr. B. Morgan, PI

The Georgia LSAMP is one of the nation's most productive in terms of ranking among the baccalaureate-origin institutions of Black STEM doctorate recipients. The unifying themes of the program include focused recruitment, retention, required research participation, student financial support, and graduate school enrollment. The Georgia LSAMP will significantly increase the number of STEM baccalaureate degrees awarded, impact 15,000 undergraduates, increase the number of students entering graduate school each year, and significantly increase retention.

Alliance Components

Curricular Enhancement
Early Identification/Recruitment
Summer Bridge Programs
Research Internships
Faculty Mentoring
Tutorial Support
Cooperative Study Groups

Alliance Accomplishments

This AMP continues to make significant contributions to the production of a diversified STEM workforce in the 21st century. The following are some accomplishments.

- ◇ Three partner institutions are ranked among the top 20 baccalaureate-origin institutions of Black STEM doctorate recipients.
- ◇ The non-HBCU partner is ranked number one in awarding baccalaureate degrees to Blacks: 3rd in biology, 8th in chemistry, 9th in mathematics, and 11th in computer science.
- ◇ Three institutions are listed among the top 10 best colleges for Blacks.

Houston-LSAMP at a Glance

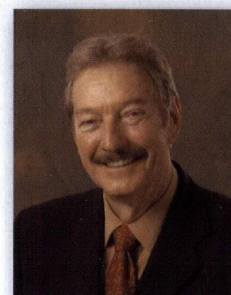


Above: (Left) Marlen Leal of Texas State participating the Rice-Houston AGEP, (Center) Ashley Garner and (Right) Jil- liam Smith participating in FaST program

The Houston-Louis Stokes Alliance for Minority Participation program has just completed its second year of Phase II. In the coming year, the alliance will see an increased focus on student research, student exchange programs, and graduate school.

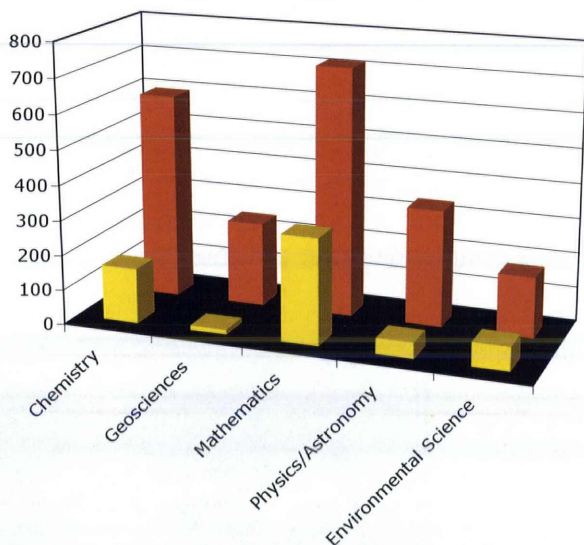
As an example of the focus we have on graduate school, one needs to look no further than Texas Southern University. At TSU, 50 percent of H-LSAMP graduates are in

graduate school. This year TSU graduated one mathematics and two chemistry students with the magna cum laude honors.



UREP/STEM Enrollment

■ 2005-2006 ■ 1998-1999



The University of Houston is sending between 40-50 percent of its students to graduate school or professional school, while the University of Houston-Downtown continues to send approximately 40 percent of its students to graduate school. H-LSAMP has seen tremendous growth in enrollment in the physical sciences including the 376 percent increase in chemistry, 115 percent increase in computer science, 744 percent increase in physics, and a 256 percent increase in Environmental science. Other growth areas include Engineering (142 percent), and Life Science (1,862 percent).

Partner Institutions:

PI: Dr. John L. Bear
jbear@uh.edu

Co-PI: Dr. Bobby Wilson
Wilson_bl@tsu.edu

Ex. Director: Craig Cassidy
ccassidy@uh.edu

University of Houston
Craig Cassidy
ccassidy@uh.edu

Texas Southern University
Michelle Tolbert
Tolbert_ym@tsu.edu

University of Houston-
Downtown
Dr. Richard Aló
RALo@uh.edu

University of Houston-Victoria
Dr. Li Chao
chaoL@uhv.edu

Texas State University
Susan Romanella
sr23@txstate.edu

Rice
Theresa Chatman
tc@rice.edu

Houston Community College
System
Dr. Mahmoud Shagrani
mahmoud.shagrani@hccs.edu

San Jacinto Community College
District
Sharon Sledge
Sharon.sledge@sjcd.edu

CSU PRESIDENT & PI



Dr. Elnora D. Daniel

EXEC. DIRECTOR & CO-PI



Dr. Marian Wilson Comer

DIRECTOR

Dr. LeRoy Jones II

ASSISTANT DIRECTOR

Ms. Lezlie J. Thompson

COORDINATOR OF SCIENCE OUTREACH PROGRAMS

Dr. Michael Neubel

ADMINISTRATIVE ASSISTANT

Ms. Fay D. Edmond

PARTNERS

Chicago State University
 DePaul University
 Governors State University
 Illinois Institutes of Technology
 Illinois State University
 Northeastern University
 Southern Illinois University - Carbondale
 Southern Illinois University - Edwardsville
 University of Illinois - Chicago
 Harold Washington College
 Harry S. Truman College
 Kennedy-King College
 Malcolm X College
 Olive Harvey College
 Richard J. Daley College
 South Suburban College
 St. Augustine College
 Wilbur Wright College
 Argonne National Laboratory

CONTACT INFORMATION

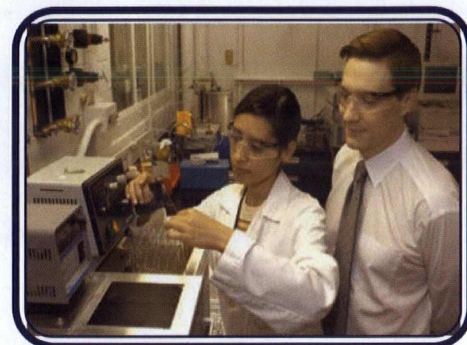
Illinois LSAMP
 Chicago State University
 9501 S. King Drive - SCI 101A
 Chicago, Illinois 60628
Phone: 773-995-3296 **Fax:** 773-995-2966
E-mail: ilsamp@csu.edu
Website: www.csu.edu/ILSAMP



ILLINOIS LOUIS STOKES ALLIANCE FOR MINORITY PARTICIPATION

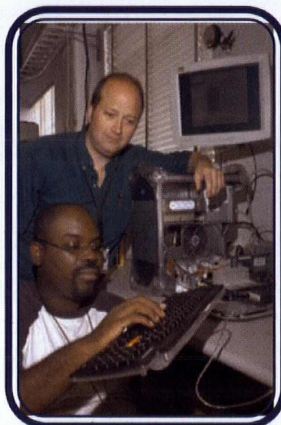
OVERVIEW

Since 1993, the Illinois Louis Stokes Alliance for Minority Participation (ILSAMP) formally the Chicago Alliance for Minority Participation (ChAMP) has responded to the National Science Foundation's (NSF) mandate to significantly increase the number of underrepresented degrees in science, technology, engineering and



and mathematics (STEM) disciplines.

ILSAMP has successfully increased the number of students receiving STEM under-graduate degrees, masters degrees and has recently begun its third Bridge to the Doctorate program.



The ILSAMP continues to support the overall goals by 1) providing programs to improve STEM students academic preparation, 2) continuously modify and improve gateway courses to better educate more students and, 3) provide underrepresented students with more educational

options to increase opportunity and enhance performance. With continued support, this program can and will serve as a model and solid foundation for students achievement in the state of Illinois.

PROGRAMS

Illinois LSAMP provides activities that are comprehensive, multi-disciplinary and focused on enhancing scholarship for minority students. Considerable effort is expended to address transition points in a student's academic career. The transition points includes: high school to college, 2-year college to 4-year college, undergraduate study to graduate study, and academic study to careers in STEM. Other activities include: hands on research apprenticeships, scholarship programs, science conferences, facilitated study groups, faculty mentoring, professional development activities, peer mentoring, summer bridge programs and internships.



LSAMP INDIANA



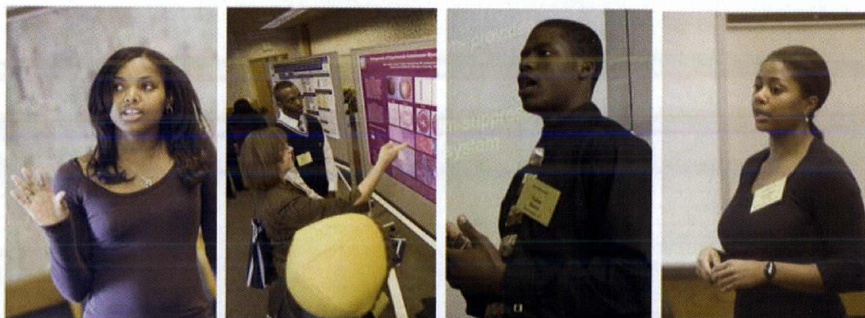
The Louis Stokes Alliance for Minority Participation (LSAMP) Indiana project is a collaboration among Ball State University, Muncie; Indiana University, Bloomington; Indiana University – Purdue University – Indianapolis; Purdue Calumet University, Hammond; and Purdue University, West Lafayette. The core programs of LSAMP Indiana are used to encourage and support students to graduate in a Science, Technology, Engineering, and Mathematics (STEM) disciplines. Our Undergraduate Research program is designed to link students with faculty and peer mentors. The students work in labs and academic research settings on challenging research projects. They also participate in research seminar discussion groups where professors and graduate students discuss current research projects. Our LSAMP Indiana students are required to prepare a research presentation for our annual alliance conference. We hosted our first Joint Annual LSAMP Indiana - Midwest Crossroads AGEP conference at our Indiana University Purdue University Indianapolis campus in November 2005. Forty-nine undergraduate and graduate students from the eight LSAMP and AGEP campuses participated in oral and poster presentations. The conference is conducted annually to provide an opportunity for students, faculty, and administrators to share best practice techniques in mentoring, academic development and student retention.

Principal Investigator
Dr. Sally Mason,
Provost, Purdue University

Director
Pamella P. Dale Shaw, D.M.D., M.P.H.
Statewide Director, LSAMP Indiana
Director, Midwest Crossroads AGEP
Purdue University
Hovde Hall, Room 148
610 Purdue Mall
West Lafayette, IN
47907-2040
Phone: (765) 496-7967
Fax: (765) 496-2031
ppshaw@purdue.edu
<http://www.purdue.edu/lisamp/>



THE NATIONAL SCIENCE FOUNDATION
NSF sponsored undergraduate component
of the Indiana Alliance to Expand Student
Opportunities.



PURDUE
UNIVERSITY

Purdue University
Pamella Shaw
(765) 496-7967
ppshaw@purdue.edu



IUPUI
Kim Nguyen
(317) 274-1126
knguyen@iupui.edu



Indiana University
Chandra Dyson
(812) 855-7853
cbaskin@indiana.edu



Ball State University
Patricia Lang
(765) 285-5516
plang@bsu.edu

PURDUE
UNIVERSITY
CALUMET

Purdue Calumet University
George Z Hong
(219) 989-2925
hongg@calumet.purdue.edu

The Islands of Opportunity Alliance- LSAMP

The Islands of Opportunity Alliance has many distinctions:

- It is the newest LSAMP, starting in November 2006;
- It is the largest LSAMP in "land" area
- It connects five universities and twelve community colleges, stretching from Palau Community College in the West to Hawai'i Community College and the University of Hawai'i at Hilo in the East.
- It strives to increase the participation of Pacific Islanders and other minority students in STEM fields, with many of our students of Polynesian or Micronesian ethnicity.



The Alliance is centered at the University of Hawai'i at Hilo, with Chancellor Rose Y. Tseng serving as the Principal Investigator. Her efforts are assisted by Daniel E. Brown, the Program Director, and Carmen Perez-Frayne, the Project Manager.



Dr. Rose Tseng,
PI of the Islands of Opportunity Alliance

UH Hilo will work collaboratively with the 17 institutions throughout Hawai'i and the Pacific to increase the overall number of underrepresented students receiving bachelor degrees in the areas of science, technology, engineering and math (STEM).



Islands of Opportunity Alliance-LSAMP

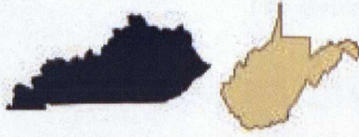
Dan Brown, Program Director
University of Hawai'i at Hilo
dbrown@hawaii.edu
808-974-7468 Phone
808-974-7737 Fax

Carmen Perez-Frayne, Project Manager
frayne@hawaii.edu
808-933-0705 Phone
808-933-0704 Fax

<http://www.uhh.hawaii.edu/affiliates/ioalsamp/>

Alliance member institutions are:

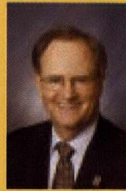
- Univ. Hawai'i at Hilo**, Rose Tseng, (808) 974-7444, rtseng@hawaii.edu
- American Samoa Comm. College**, Adele Satele-Galeai, (684) 699-9155, a.galeai@ascc.as
- Chaminade University**, M. Lee Goff, (808) 440-4209, lgoff@chaminade.edu
- College of Marshall Islands**, Don Hess, (692) 625-5903, cmihess@yahoo.com
- College of Micronesia**, Spensin James, (691) 320-2479, sjames@comfsm.fm
- Guam Community College**, Michelle Santos, (671) 735-5606, msantos@guamcc.edu
- Hawai'i Community College**, Douglas Dykstra, (808) 974-7592, dykstra@hawaii.edu
- Hawaii Pacific University**, Les Correa, (808) 544-0228, lcorrea@hpu.edu
- Honolulu Community College**, Ramsey Pedersen, (808) 845-9225, ramsey@hcc.hawaii.edu
- Kapiolani Community College**, Robert Franco, (808) 734-9514, bfranco@hawaii.edu
- Kauai Community College**, Francis Takahashi, (808) 245-8219, francist@hawaii.edu
- Leeward Community College**, Peter Quigley, (808) 455-0440, quigley@hawaii.edu
- Maui Community College**, Janet Six, (808) 984-3347, six@hawaii.edu
- Northern Marianas College**, Glenn Keaton, (670) 234-5498 ext 1212, glennk@nmcnet.edu
- Palau Community College**, Patrick Tellei, (680) 488-1669, tellei@palau.edu
- University of Guam**, June Calvo, (671) 735-2787, jcalvo@uog9.uog.edu
- Univ. Hawai'i at Manoa**, Joshua Kaakua, (808) 956-2289, kaakua@eng.hawaii.edu
- Univ. Hawai'i - West Oahu**, Gene Awakuni, (808) 454-4750, awakuni@uhwo.hawaii.edu
- Windward Community College**, Angela Meixell, (808) 235-7402, meixell@hawaii.edu



Kentucky - West Virginia Alliance for Minority Participation

a Louis Stokes Alliance for Minority Participation

Executive Director
Michael Lee
mlee@engr.uky.edu



Principal Investigator:

Dr. Lee T. Todd, President
University of Kentucky
101 Main Building
Lexington, KY 40506-0032,
Phone: (859) 257-1701
Fax: (859) 257-1760
Email: ltodd@email.uky.edu



Co-Principal Investigator:

Dr. Ingrid St. Omer, Assistant Professor
Electrical & Computer Engineering
University of Kentucky
453 F. Paul Anderson Tower
Lexington, KY 40506-0046
Phone: (859) 257-6143
Fax: (859) 257-3092
Email: istomer@engr.uky.edu

Partner Institutions:

Dr. Preston Miles
Centre College
Phone : (859) 238-5414
Fax : (859) 236-7925
Email: miles@centre.edu

Ms. Charlene Walker
Bluegrass Community & Technical College
Phone: (859) 246-6438
Fax: (859) 246-4699
Email: charlene.walker@kctcs.edu

Dr. Andrew Rogerson
Marshall University
Phone: (304) 696-3518
Fax: (304) 696-3243
Email: rogersona@marshall.edu

Dr. T.S. Kochhar
Kentucky State University
Phone: (502) 597-6070
Fax: (502) 597-6403
Email: Tejinder.kochhar@kysu.edu

Dr. Charles McGruder
Western Kentucky University
Phone: (270) 745-5277
Fax: (270) 745-4357
Email: charles.mcgruder@wku.edu

Mr. Joseph Kusimo
West Virginia State University & West Virginia State Community & Technical College
Phone: (304) 766-3266
Fax: (304) 766-3088
Email : kusimoaj@wvstateu.edu

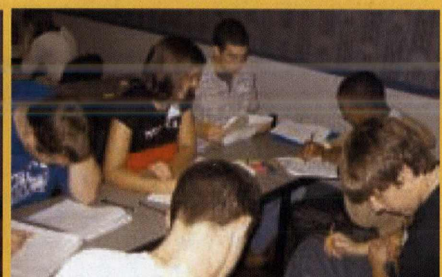
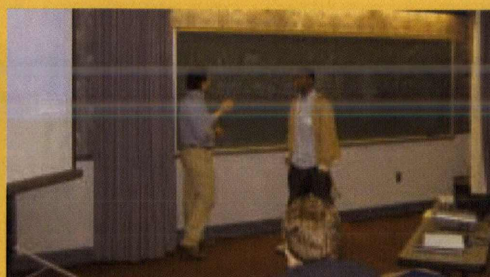
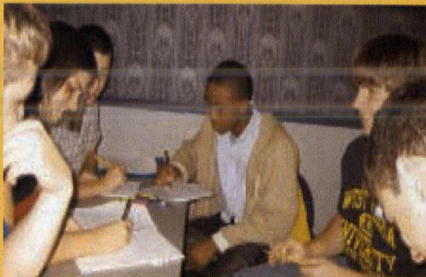
Dr. Mike Mays
West Virginia University
Phone: (304) 293-2011 ext 2324
Fax: (304) 293-3982
Email: mays@math.wvu.edu

Dr. Pamela Feldhoff
University of Louisville
Phone: (502) 852-3791
Fax: (502) 852-8375
Email: pwfeld01@louisville.edu

The KY – WV LSAMP alliance is a new Phase I collaboration among ten academic institutions, the KY-NSF Experimental Program to Stimulate Competitive Research (EPSCoR), the WV-NSF EPSCoR, the Kentucky Council on Postsecondary Education, and the West Virginia Higher Education Policy Commission. The partnership institutions are: Bluegrass Community & Technical College, Lexington, KY; Centre College, Danville, KY; Kentucky State University, Frankfort, KY; Marshall University, Huntington, WV; University of Kentucky, Lexington, KY; University of Louisville, Louisville, KY; Western Kentucky University, Bowling Green, KY; West Virginia State Community & Technical College, Institute, WV; West Virginia State University, Institute, WV and West Virginia University, Morgantown, WV. To maximize the strengths and contributions of each Alliance partner, the development of best practices for each Alliance focus area described below will be housed among the various institutions.

The developed approach incorporates the six identified characteristics of successful programs in a manner tailored for the Alliance institutions and the two states. The focus areas for our approach are:

- Recruitment and retention
- Research experiences
- Transitional experiences
- Climate
- Curriculum reform
- Postgraduate career aspirations
- Role models



<http://kywvamp.uky.edu>



LOUIS STOKES

Louisiana Alliance for Minority Participation

PARTNER INSTITUTIONS

Southern University Baton Rouge
Dr. Diola Bagayoko & Dr. Ella Kelley
(225) 771-2730 or 771-3990
bagayoko@aol.com
elkchem@aol.com

Dillard University
Dr. Abdalla Darwish
(504) 816-4840
adarwish@bellsouth.net

Grambling State University
Dr. Danny Hubbard
(318) 274-3720
hubbardd@gram.edu

Louisiana State University
Dr. Su-Seng Pang
(225) 578-5892
mepang@me.lsu.edu

LUMCON
Dr. Paul Sammarco
(985) 851-2876
Psammarco@lumcon.edu

McNeese State University
Dr. George Mead
(337) 475-5785
mead@mcneese.edu

Nunez Community College
Stephen Waddell & Gillian McKay
(504) 368-7506 or 278-7491
gmckay@nunez.edu

Southern University New Orleans
Dr. Joe Omojola
(504) 286-5128 or 284-5458
jomojola@suno.edu

Southern University Shreveport
Warner Brown
(318) 674-3409
wbrown@susla.edu

Tulane University
Dr. Henry Bart
(504) 865-5191
hank@museum.tulane.edu

University of Louisiana-Lafayette
Dr. Vijay Raghavan
(337) 482-6603
raghavan@louisiana.edu

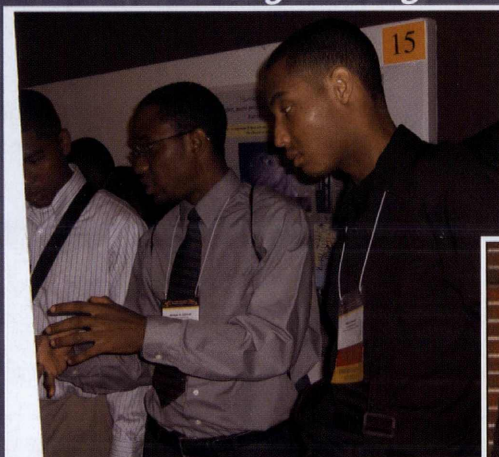
University of New Orleans
Dr. Ashok Puri
(504) 280-6341 apuri@uno.edu

www.ls-lamp.org

Awarded 1995

Substantially increasing the number and quality of minority students earning degrees in science, technology, engineering and mathematics

Systemic Mentoring Academic Enhancement

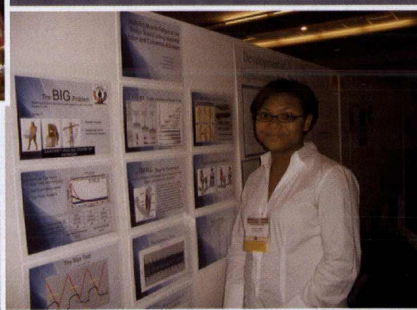


Undergraduate Research



Institutionalization Bridge to Doctorate 2

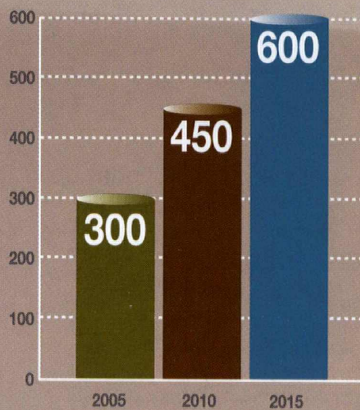
Retention



Graduate School Success

The MI-LSAMP Plan

Number of STEM graduates through 2015



The Michigan Louis Stokes Alliance for Minority Participation

has set an aggressive goal to double the annual number of its minority graduates in science, technology, engineering and math (STEM) fields from 300 to 600 by 2015. To meet its goal, four top universities have partnered to share and implement retention best practices in the following areas:

- Research projects
- Mentoring
- Internships
- Transition support

The Alliance's goal supports Governor Granholm's plan to double the number of State of Michigan residents who earn college degrees during the next decade.

Principal Investigator

Dr. Mary Sue Coleman, Principal Investigator and President, University of Michigan, Office of the President, 2074 Fleming Administration Building, 503 Thompson Street, Ann Arbor, MI 48109-1340, (734) 764-6270, (734) 936-3529 (Fax), marysuec@umich.edu



Project Director

Dr. Levi T. Thompson, Project Director, Richard E. Balzhiser Collegiate Professor of Chemical Engineering and Director, Hydrogen Energy Technology Laboratory, University of Michigan, 3026 H. H. Dow Building, 2300 Hayward Street, Ann Arbor, MI 48109-2136, (734) 936-2015, (734) 763-0459 (Fax), ltt@umich.edu

Michigan State University - Co-Principal Investigator - Dr. Thomas F. Wolff, (517) 355-5128, wolff@egr.msu.edu

Wayne State University - Co-Principal Investigator - Dr. Ralph H. Kummier, (313) 577-3775, rkummier@wayne.edu

Western Michigan University - Co-Principal Investigator - Dr. Edmund Tsang, (269) 276-3249, edmund.tsang@wmich.edu

Administrative contact - Alliance Program Administrator - Elaine M. Dowell, (734) 936-3635, morne@umich.edu

For more information about MI-LSAMP, visit <http://www.engin.umich.edu/students/mi-lsamp/>



MID EASTERN LOUIS STOKES ALLIANCE FOR MINORITY PARTICIPATION



Belinda C. Anderson, Ed.D., Principal Investigator, (804) 257-5835, bcanderson@vuu.edu
Phillip W. Archer, Ph.D., Executive Director, (804) 257-5692, pwarcher@vuu.edu
Website: www.vuu.edu/academics/meamp/home.htm

The Mid Eastern Louis Stokes Alliance for Minority Participation was introduced on December 5, 2001 as a collaborative effort between Virginia Union University, Elizabeth City State University, Fisk University, James Madison University, Johnson C. Smith University, Saint Augustine's College, and Virginia Polytechnic Institute and State University to **increase the number of individuals** receiving advanced degrees in the United States from families which have traditionally not had access to the opportunities of higher education and **who, through his or her life, cultural and/or ethnic experiences, have unique and potentially positive contributions to make** to the program, the discipline, and in the larger academic community.



Activities AMP students are involved in:

Summer Bridge Program

Supplemental Instruction

Tutorial Services in the "Safe Haven"

Weekly Seminars

National and Local Conferences

Faculty and Peer Mentoring

Graduate School Preparation

Faculty-Mentored Research

Financial and Academic Support

Accomplishments/Highlights:

Dr. Gloria Payne of Saint Augustine's College

was one of the recipients of the 2006 Faculty Role Model Awards which was presented during the 8th National Role Model's Conference.

Several students have presented and received awards at both national and local conferences.



Partner Institutions

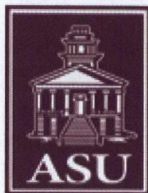
Virginia Union University Shaheen Islam, Ph.D. (804) 257-5661 SIslam@vuu.edu www.vuu.edu	Elizabeth City State University Ali Khan, Ph.D. (252) 335-3242 aakhan@mail.ecsu.edu www.ecsu.edu	Fisk University W. Eugene Collins, Ph.D. (615) 329-8605 ccollins@fisk.edu www.fisk.edu	James Madison University Daniel Wubah, Ph.D. (540) 568-3508 wubahda@jmu.edu www.jmu.edu	Johnson C. Smith University Baldeo Chopra, Ph.D. (704) 378-1050 bchopra@jcsu.edu www.jcsu.edu	St. Augustine's College Gloria Early Payne, Ph.D. (919) 516-4151 gpayne@cs.st-aug.edu www.st-aug.edu	Virginia Tech Nini Smiley (540) 231-6362 nsmiley@vt.edu www.vt.edu
---	--	---	---	---	--	--

LSMAMP

Louis Stokes Mississippi Alliance for Minority Participation

Celebrating 14 Years of Increasing Minority Degrees
in Science, Technology, Engineering and Mathematics

Alcorn State University
Dr. Troy Stewart, Sr.
Site Coordinator
1000 ASU Drive, #780
Alcorn State, MS 39096
601-877-6440
troy@lorman.alcorn.edu



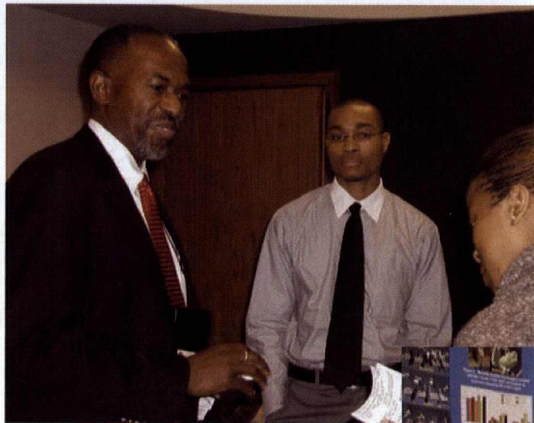
2006 National Research Symposium
November 16-18, 2006



Dr. James Perkins

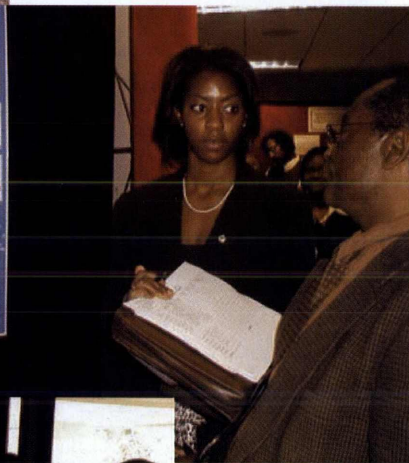
Project Director
Jackson State University
P.O. Box 18119, Jackson, MS 39217
601-979-2024
james.perkins@jsums.edu

Delta State University
Dr. Ernest L. Brothers
Site Coordinator
P.O. Box 3241
Cleveland, MS 38733
662-846-4496
ebrother@deltastate.edu



Above, Keynote Speaker Dr. James Hildreth of Meharry Medical Center speaks of his HIV/AIDS research with participants. At right, a poster presenter pauses during her discussion with a judge.

Jackson State University
Dr. Glake Hill
Site Coordinator
P.O. Box 18119
Jackson, MS 39217
601-979-1699
glakeh@ccmsi.us



Mississippi State University
Dr. Tommy Stevenson
Site Coordinator
P.O. Box 9544
MSU, MS 39762
662-325-8449
tommy@enr.msstate.edu



Mississippi Valley State University
Dr. Joseph Wahome
Site Coordinator
1400 Hwy 82 West
Itta Bena, MS 38941
662-254-3384
wahome@mvsu.edu

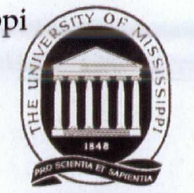


Tougaloo College
Dr. Joseph Russell
Site Coordinator
500 W. County Line Rd.
Tougaloo, MS 39174
jrussell@tougaloo.edu



Above, science students from Bailey High School visit the Symposium.

University of Mississippi
Dr. Don Cole
Site Coordinator
P.O. Box 157
University, MS 38677
662-915-1379
dcole@olemiss.edu



University of Southern Mississippi
Andrè Heath
Site Coordinator
P.O. Box 5137
Hattiesburg, MS 39406
601-266-6593
andre.heath@usm.edu



Pictured at right, one of the poster presentation winners.

NEW MEXICO AMP

ALLIANCE FOR MINORITY PARTICIPATION

Expanding Student Horizons — New Mexico AMP's core programs

SMET 101 (Introduction to Science, Math, Engineering & Technology) teaches and promotes:

- Thinking and learning skills
- Problem solving techniques
- Career exploration skills
- Collaboration and teamwork



New Mexico AMP Student Research Conference Poster Presentation, October 2006

The Undergraduate Research Assistantship introduces and develops:

- Involvement in cutting edge research projects
- Faculty mentoring
- Research presentation experience
- Preparation for internships, graduate school, or the workforce

The Student Research Conference strengthens and builds:

- Oral and written communication skills
- Professional conference presentation experience
- Faculty and professional mentoring
- Professional, career, and academic workshops
- Networking

James Jimenez (right at podium), Chief of Staff to Governor Bill Richardson, addresses the audience at the 2006 New Mexico AMP Student Research Conference



Drs. Wanda Ward and A. James Hicks (4th & 5th from left) from NSF with Bridge to the Doctorate students (l-r) Amy Fierro, Deserae Gutierrez, Andrew Blackman, and Naiomi Tapia at the 2006 New Mexico AMP Student Research Conference



The Bridge to the Doctorate provides and enhances:

- Academic & financial support through the Master's degree
- Faculty/professional mentoring/networking
- Progress toward the Ph.D.
- Editorial assistance for thesis preparation

New Mexico AMP University Partners

Eastern New Mexico University

Regina Aragon, Ph.D.
Assoc. Professor, Math (505) 562-2328
regina.aragon@enmu.edu

New Mexico State University

A. Michele Auzenne, Program Manager
New Mexico AMP
(505) 646-1847 mauzenne@nmsu.edu

New Mexico Highlands University

New Mexico AMP Admin. Office
A. Michele Auzenne, Program Manager
(505) 646-1847 amp@nmsu.edu

University of New Mexico

Laura Crossey, Ph.D.
Asst. Chair, Earth and Planetary Sciences
(505) 277-5349 lcrossey@unm.edu

New Mexico Institute of Mining and Technology

Allison Costello
Assoc. Director, Admissions
(505) 835-5424 costello@admin.nmt.edu

Western New Mexico University

Mary Dowse, Ph.D.
Assoc. Professor, Geology
(505) 538-6352 dowsem@silver.wnmu.edu

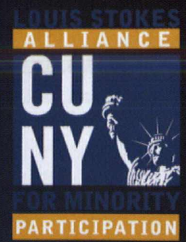
A total of 5,759 STEM degrees have been awarded over the life of the New Mexico AMP program. In 2005/2006, 39% of STEM degrees were awarded to underrepresented students, up from 24% in 1992/1993.



New Mexico Alliance for Minority Participation; MSC 3AMP; New Mexico State University
P.O. Box 30001; Las Cruces, NM 88003-8001; Phone: (505) 646-8061; Fax: (505) 646-2960;
email: amp@nmsu.edu; www.nmsu.edu/~nmamp



NEW YORK CITY ALLIANCE

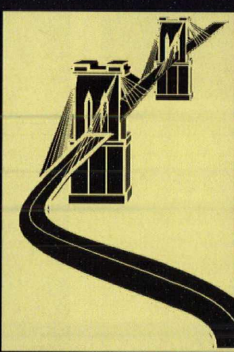
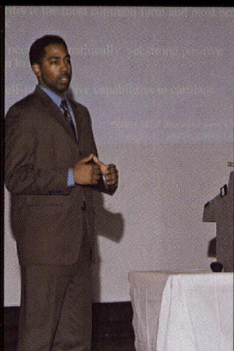


[HTTP://NYC-AMP.CUNY.EDU](http://nyc-amp.cuny.edu)

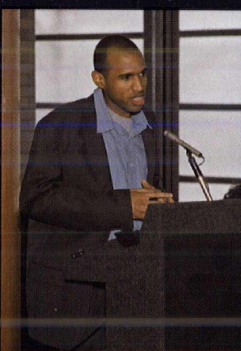
Transitions 2006



It is an event exclusively for the NSF sponsored Louis Stokes Alliance Bridge to the Doctorate Scholars.



'Transitions 2006' was held at the City College of New York May 5 - 6, 2006



Alliance Members

Name	College	Telephone #	Email
<i>Steering Committee</i>			
Barba, Joe	CCNY	212-650-5435	barba@ee-mail.engr.cuny.cuny.edu
Bargar, Robin	NYCCT	718-260-5525	rbargar@citytech.cuny.edu
Bragg, Sadie	BMCC	212-220-8320	sbragg@bmcc.cuny.edu
Cantarella, Marcia	Hunter	212-772-4825	mcantare@hunter.cuny.edu
Caton, Marcia	LaGuardia	718-482-5642	mcaton@lagcc.cuny.edu
Holder, Heidi	Brooklyn	718-951-5033	holder@brooklyn.cuny.edu
Kobilinsky, Lawrence	John Jay	212-237-8884	lkobilin@jjay.cuny.edu
Meleties, Panayiotis	York	718-262-2783	meleties@york.cuny.edu
Molina, Carlos	Hostos	718-518-6663	cmolina@hostos.cuny.edu
Patwary, Mohsin	Medgar Evers	718-270-6218	mohsin@mec.cuny.edu
Sanchez, George	Bronx CC	718-289-5139	george.sanchez@bcc.cuny.edu
Simmons, Gail	CSI	718-982-2430	gsimmons@mail.esi.cuny.edu
Slavin, Dennis	Baruch	646-660-6504	dennis_slavin@baruch.cuny.edu
Smith, Gail	Grad. School	212-817-7540	gsmith@gc.cuny.edu
Strekas, Thomas	Queens	718-997-4105	thomas_strekas@qc.edu
Sukhanova, Ekaterina	Queensboro	718-281-5508	esukhanova@qcc.cuny.edu
Suss, Stuart	Kingsboro	718-368-5661	ssuss@kbcc.cuny.edu
Tramontano, William	Lehman	718-960-8222	wtramont@lehman.cuny.edu



North Carolina Louis Stokes Alliance for Minority Participation

Dr. Janice G. Brewington, Principal Investigator **Dr. Joseph Monroe, Co-Principal Investigator**

Phase III:

The North Carolina Louis Stokes Alliance for Minority Participation (NC-LSAMP), funded by the National Science Foundation, and established in 1992, formed a partnership between eight institutions within the University of North Carolina system with the primary goal of significantly increasing the enrollment and retention of underrepresented minority students in science, technology, engineering and mathematics (STEM). Partner institutions include North Carolina A&T State University as lead campus, Fayetteville State University, North Carolina Central University, North Carolina State University, University of North Carolina at Chapel Hill, University of North Carolina at Charlotte, University of North Carolina at Pembroke and Winston-Salem State University.

During Phase III, program implementation has continued its focus on nurturing and supporting students through undergraduate studies in STEM fields, emphasis on the attainment of M.S. and Ph.D. degrees in these disciplines. Phase III priorities include expanded undergraduate laboratory research opportunities, community college recruitment and transfers, school to college summer bridge programs, as well as preparation of participants for graduate school through mentoring and peer group activities.



Moreover, the NSF Bridge to the Doctorate activity has been implemented at three Alliance institutions and continues to impact the production of minority research scientists and faculty to meet the needs of the country. NCLSAMP Alliance partners are committed to maintaining and strengthening these initiatives through collaborative efforts.



Staying the course...
While Exploring
New Frontiers
in **STEM**

Targeted Activities, Services & Programs

- Supplemental Instruction and Tutorial Services in "Gatekeeper" Courses
- Mentoring
- Peer Study Groups
- Faculty Mentored Research
- Summer Bridge Programs
- Industry and National Research Laboratory Experience
- Career Advisement
- Stipend Awards
- Conferences and Seminars
- Bridge to the Doctorate

North Carolina Louis Stokes Alliance for Minority Participation
College of Engineering, 640 McNair Hall
North Carolina A&T State University
1601 E. Market Street
Greensboro, NC 27411
<http://www.ncsampsamp.org>

Lead Institution

North Carolina A&T State University

Mrs. Marcia Williams

NCLSAMP Alliance Coordinator
Phone: (336) 334-7589 ext. 140
Fax: (336) 334-7540
marcia@ncat.edu

Ms. Kristie Johnson

Program Assistant
Phone: (336) 334-7446
Fax: (336) 334-7540
kjohnso1@ncat.edu

Partner Institutions

Fayetteville State University

Dr. Daniel Okunbor

Campus Principal Investigator
Phone: (910) 672-2104
Fax: (910) 672-1083
diokunbor@uncfsu.edu

Mrs. Veronica Bailey

Campus Coordinator
Phone: (910) 672-1081
Fax: (910) 672-1083
vmangum@uncfsu.edu

North Carolina Central University

Dr. Sandra DeLauder

Campus Principal Investigator
Phone: (919) 530-6456
Fax: (919) 530-5135
sde-laude@wpo.nccu.edu

North Carolina State University

Dr. Tony Mitchell

Campus Principal Investigator
Phone: (919) 515-3264
Fax: (919) 515-8702
tmitchel@eos.ncsu.edu

University of NC at Chapel Hill

Dr. Patricia Pukkila

Campus Principal Investigator
Phone: (919) 966-5576
Fax: (919) 962-1548
pukkila@unc.edu

Dr. Nalin Parikh

Campus Coordinator
Phone: (919) 962-7160
Fax: (919) 962-0480
nparikh@physics.unc.edu

University of NC at Charlotte

Dr. Bill Hill

Campus Principal Investigator
Phone: (704) 687-2090
Fax: (704) 687-6912
bjhill@email.uncc.edu

Mrs. Jodi Turner

Campus Coordinator
Phone: (704) 687-2065
Fax: (704) 687-3914
jodturne@email.uncc.edu

University of NC at Pembroke

Dr. Thomas Leach

Campus Principal Investigator
Phone: (910) 521-6198
Fax: (910) 521-6606
thomas.leach@uncp.edu

Dr. Velinda Worlax

Campus Coordinator
Phone: (910) 521-6567
Fax: (910) 521-6649
velinda.worlax@uncp.edu

Winston-Salem State University

Dr. Elva Jones

Campus Principal Investigator
Phone: (336) 750-2485
Fax: (336) 750-2499
jonese@wssu.edu



Northeast Louis Stokes Alliance
for Minority Participation

www.nelsamp.neu.edu

Providing Opportunity



Doing Research



Learning from each other

University of Massachusetts Amherst

John Cunningham
413.545.2554

&

Susan Bronstein
413.545.5742

jcunningham@provost.umass.edu

sbronstein@acad.umass.edu

Northeastern University

Susan Powers-Lee
617.373.4741
s.powers-lee@neu.edu

&

David Blackman
617.688.2726
d.blackman@neu.edu

University of Connecticut

Damon Williams
860.486.9106
damonw@wvg.group.com

University of Rhode Island

Harold Knickle
401.874.2678
knickle@egr.uri.edu

Worcester Polytechnic Institute

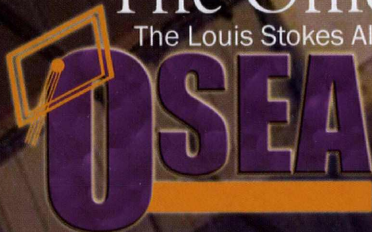
Lance Schacterle
508.831.5514
les@wpi.edu

&

Calvin Hill
508.831.5796
chill@wpi.edu

The Ohio Science and Engineering Alliance

The Louis Stokes Alliance for Minority Participation Program



Lead Institution: The Ohio State University
PI: President Karen A. Holbrook
Co-PI: Dean Patrick Osmer
Director: Dr. Jean E. Girves
Project Coordinator: Desiree D. Crawl

The Ohio Science & Engineering Alliance
247 University Hall, 230 North Oval Mall
Columbus, OH 43210
614.247.7267
Website: www.OhioSEA.org

The Ohio Science and Engineering Alliance (OSEA) supports collaborative as well as campus-based initiatives among the 15 participating public and private universities within the state. The primary goal is to improve the retention of underrepresented minority students in STEM fields and to encourage more students to pursue graduate study.

Collaborative initiatives include:

- Glenn-Stokes Research Internships
- The Ohio Student Research Forum
- Professional development workshops on the first-year experience and summer bridge programs



Seed grants support individual campus-based programs, such as:

- Summer Bridge
- Living-Learning
- Supplemental Instruction
- Field Trips
- Mentoring
- Tutoring



Alliance Partners

- Battelle Memorial Institute
- COSI
- Ohio College Access Network
- Ohio Board of Regents
- Wright Patterson Air Force Base



One hundred eighty one students, faculty, staff, and corporate representatives participated in the third Ohio Student Research Forum, which was hosted by the Ohio State University in August 2006. Students reported the results of their research during the poster session and through oral presentations.

Bowling Green State University
T. Carter Gilmer
419.372.0471/ cgilmer@bgnet.bgsu.edu

Case Western Reserve University
Stephen Haynesworth
216.368.4413/ seh5@po.cwru.edu

James McGuffin-Cawley
216.368.6482/ jxc41@po.cwru.edu

Central State University
Robert Marcus
937.376.6357/ rmarcus@centralstate.edu

Cleveland State University
Carol Phillips-Bey
216.523.7151/ c.phillips-bey@csuohio.edu

Kent State University
Geraldine Hayes-Nelson
330.672.2920/ ghnelson@kent.edu

Steve O. Michael
330.672.2442/ smichael@kent.edu

Miami University
Richard Bretz
513.529.2349/ bretzrl@muohio.edu

Ohio State University
Caroline Breitenberger
614.292.6945/ caroline+@osu.edu

Andrew Heckler
614.688.3048/ heckler.6@osu.edu

Minnie McGee
614.292.4309/ mcgee.3@osu.edu

Ohio University
Laquetta K. Cortner
740.593.1477/ cortner@ohio.edu

Howard D. Dewald
740.593.2979/ dewald@ohio.edu

University of Akron
Paul Lam
330.972.7817/ plam@uakron.edu

Jeffrey J. Wallace
330.972.6843/ jjw1@uakron.edu

University of Cincinnati
Cheryll A. Dunn
513.556.6561/ cheryll.dunn@uc.edu

Kenneth Simonson
513-556-1164/ kenneth.simonson@uc.edu

University of Dayton
Malcolm W. Daniels
937.229.2736/ malcolm.daniels@notes.udayton.edu

Paul Benson
937.229.2602/ paul.benson@notes.udayton.edu

University of Toledo
Constantine Theodosiou
419.530.7794/ constantine.theodosiou@utoledo.edu

Wilberforce University
Edward Asikele
937.708.5657/ easikele@wilberforce.edu

Wright State University
P. Ruby Mawasha
937.775.5001/ mawasha@cs.wright.edu

Michele Wheatly
937.775.2611/ michele.wheatly@wright.edu

Youngstown State University
Nathan P. Ritchey
330.941.4268/ npritchey@ysu.edu

OKLAHOMA LSAMP

<http://ls-okamp.okstate.edu/>
Oklahoma State University
Stillwater, OK 74078

TWO GREATEST ACCOMPLISHMENTS:

- Continued increase in the graduation of Native American students with the BS degrees in STEM fields.
- Transformation of the culture of our students from focusing on a BS degree to planning for graduate school, accomplished largely through the graduate school preparation component and resulting in a critical mass of potential graduate students for graduate programs.

STUDENT NEWS:

Paul Wright, Industrial Engineering major, OSU, was awarded the Institute of Industrial Engineers National Scholarship and the United Parcel Service Scholarship for a Minority Student 2006-2007.

James Brown, Botany, OSU conducted research through a collaborative effort of the Oklahoma LSAMP and EPSCoR programs. Findings were presented at the American Society of Plant Biologists Annual meeting in Daytona Beach, FL.

Daniel Beck, Computer Science Spring '06 graduate, ECU, was accepted for graduate school at Oklahoma State University.

Valerie Toodle, CU, graduated in May 2006, spent the Summer 2006 at OU Health Sciences Center doing research in the EMBRE program and has accepted \$25,500 graduate school offer at Johns Hopkins in the Department of Pathobiology.

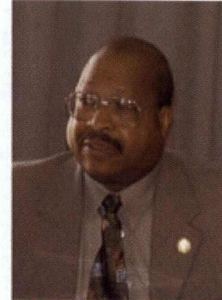
Elizabeth Saladin, SWOSU, presented at the 2006 National Conference for Undergraduate Research (NCUR).

Erik Gonzales, Jonathan Gonzales, Andrea Christy, and Sabrina Scroggins, all students at ECU participated in the McNair Scholars program research at the Robert S. Kerr Environmental Research Lab.



James Brown, Plant Pathology research laboratory. (James has 2 research publications with Dr. Jean Marie Verchot-Lubicz)

Principal Investigator



Earl D. Mitchell, Jr., Ph.D.

Interim Head and Professor
Department of Biochemistry and Molecular Biology
246 Noble Research Center
Oklahoma State University
Stillwater, OK 74078-3035
405-744-6189; Fax: 405-744-7799

Partner Institutions

CAMERON UNIVERSITY (CU)

Dr. Theodore Snider
580-581-2890; E-mail: teds@cameron.edu

EAST CENTRAL UNIVERSITY (ECU)

Dr. Carl Rutledge
580-332-8000 x392; E-mail: crutledge@mac.com

LANGSTON UNIVERSITY (LU)

Dr. Sharon Lewis
405-466-3316; E-mail: salewis@lunet.edu

NORTHEASTERN OKLAHOMA STATE UNIVERSITY (NEOSU)

Dr. Myron Cherry
918-456-5511 x3833; E-mail: cherry@nsuok.edu

NORTHWESTERN OKLAHOMA STATE UNIVERSITY (NWSU)

Mr. Timothy Maharry
580-327-8583; E-mail: tjmaharry@nwsu.edu

OKLAHOMA STATE UNIVERSITY (OSU, LEAD INSTITUTION)

Dr. Yousif Sherif
405-744-6710; E-mail: yousef.sherif@okstate.edu

SOUTHEASTERN OKLAHOMA STATE UNIVERSITY (SEOSU)

Dr. Tim Patton
580-745-2284; E-mail: tpatton@sosu.edu

SOUTHWESTERN OKLAHOMA STATE UNIVERSITY (SWOSU)

Dr. Brian Campbell
580-774-3118; E-mail: campbeb@swosu.edu

UNIVERSITY OF CENTRAL OKLAHOMA (UCO)

Dr. John Garic
405-974-3493; E-mail: jgaric@ucok.edu

UNIVERSITY OF OKLAHOMA (OU)

Dr. P. Simin Pulat
405-325-1069; E-mail: pulat@ou.edu

UNIVERSITY OF TULSA (TU)

Dr. J.C. Diaz
918-631-2228; E-mail: diaz@utulsa.edu

LSAMP Pacific Alliance

Building a National Model for Excellence in Native American Higher Education Programs

University of Alaska Anchorage
University of Alaska Fairbanks
University of Hawai'i Manoa
University of Washington

Pacific Alliance Strategies

Pre-College: Creating empowerment and excitement around STEM careers

- computer building with trig, physics & chemistry

Bridge: Building a strong foundation for academic and professional achievement

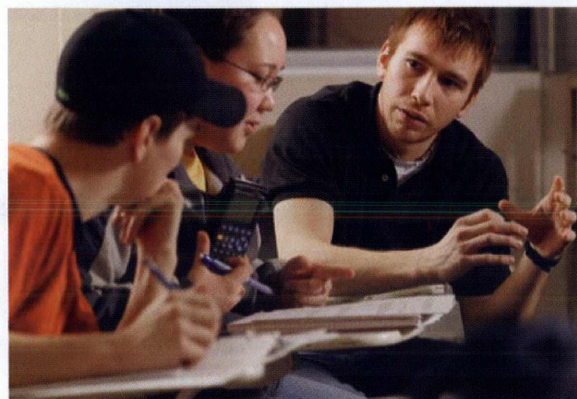
- Internships with Calculus Prep

Undergraduate Retention: Fostering an engaged academic learning community

- Learning Community
- Co-enrollment
- Team building
- Group study
- Advising
- Scholarships
- Faculty & Peer Mentoring
- Supporting community
- Professional mentoring
- Graduate student mentoring
- Research
- Hands on research
- Service learning

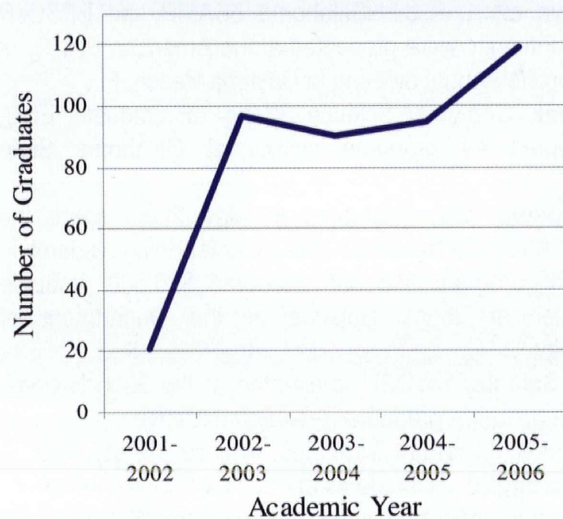
Graduate School and the Professoriate (in Development)

- Peer mentoring & co-enrollment
- Workshops for presentations and technical papers
- Organized study groups
- Collaborative experiences
- Faculty cross-cultural training
- Faculty mentoring
- Advising
- Internships
- National & international conferences
- Grant writing workshops
- Graduate research and undergraduate research
- Equipment funding



Alaska Native student Matt Calhoun, at the right graduated with a BS in Civil Engineering from the University of Alaska Anchorage (UAA) in 2002. He is back at UAA as the Alliance Pre-College Program Director. Here he is working with first year Alliance students on a chemistry problem.

Pacific Alliance
Indigenous STEM Degrees



University of Alaska Anchorage

Dr. Herb Schroeder, (907) 786-1860, herb@uaa.alaska.edu
Tracey Mueller, (907) 786-1074, tracey@uaa.alaska.edu

University of Alaska Fairbanks

Dr. Dan Solie, (907) 474-7604, ffjds@uaf.edu

University of Hawai'i Manoa

Dr. Tep Dobry, (808) 956-8404, tep@wiliki@eng.hawaii.edu
Josh Kaakua, (808) 956.2289, kaakua@eng.hawaii.edu

University of Washington

Scott Pinkham, (206) 221-7769, spinkham@u.washington.edu



<http://ansep.uaa.alaska.edu/>



PSLSAMP

Peach State Louis Stokes
Peach State Louis Stokes Alliance for Minority Participation

Major Accomplishments of Phase I, Year I

Lead Institution

The University of Georgia
www.pslsmp.uga.edu

Michael F. Adams, Ph.D.
 Principal Investigator

Cheryl D. Dozier, DSW
 Lead CO-Principal Investigator
 706-583-8195
cdozier@uga.edu

Michelle Garfield, Ph.D.
 Co-Principal Investigator
 706-542-5745
mgarfield@uga.edu

Wyatt Anderson, Ph.D.
 Co-Principal Investigator
 706-542-7001
wyatt@uga.edu

Maureen Grasso, Ph.D.
 Co-Principal Investigator
 706-542-4788
magrasso@uga.edu

Ernest Brothers, Ph.D.
 Executive Director
pslsamp@uga.edu

Ednisha Knighten, M.Ed.
 Program Coordinator
ednisha@uga.edu

Partner Institutions

Bainbridge College
www.bainbridge.edu
Abe Ojo, Ph.D.
aojo@bainbridge.edu

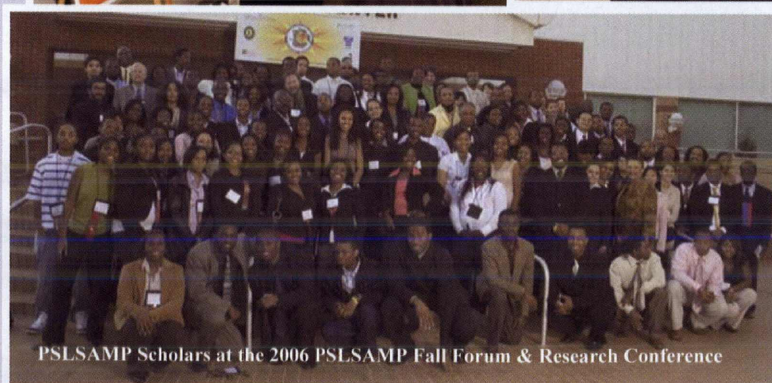
Georgia Perimeter College
www.gpc.edu/~gpclsamp
Elizabeth A. Molloy, Ph.D.
emolloy@gpc.edu

Fort Valley State University
www.fvsu.edu/outreach/pslsamp.asp
Dwayne Daniels, Ph.D.
daniels@fvsu.edu

Savannah State University
www.savstate.edu/scitech/ssupslsmp
Kuppuswamy Jayaraman, Ph.D.
jayaramk@savstate.edu

Southern Polytechnic State University
<http://pslsamp.spsu.edu>
Patrick Otoo Bobbie, Ph.D.
pbobbie@spsu.edu

- Summer Research Programs for Undergraduates: Summer research opportunities for undergraduate students to work in a lab with a faculty mentor.
- Summer Bridge Program for High School Students: This program provided high school students the opportunity to visit different campuses and investigate an array of STEM majors.
- Tutoring initiatives for PSLSAMP students.
- Career support and professional development: Orientation to graduate school, tours of campuses offering advanced programs, career fairs, GRE test prep and similar activities. These activities communicated the expectation that students would continue their career beyond the bounds of their current program.



PSLSAMP Scholars at the 2006 PSLSAMP Fall Forum & Research Conference

PSLSAMP Scholars National Recognition

- Fort Valley State University PSLSAMP Scholar **Kesha McRae** discovered a new strain of nematode in her research conducted with Dr. George Mbata. The project was titled: "The Susceptibility of Indianmeal Moth Adults and Larvae to Different Strains of Nematodes."
- University of Georgia PSLSAMP Scholar **Oluwamuyele Felix Akinbote** was named a 2006 Merage American Dream Fellow which will support his first two years of medical school.

Peach State Louis Stokes Alliance for Minority Participation
 University of Georgia
 Bank of America Bldg Suite 211 | 110 E. Clayton Street
 Athens, GA 30602
 Office: 706-425-3158 | Fax: 706-425-3158
 Website: www.pslsmp.uga.edu
 Email: pslsamp@uga.edu

CENTRAL MANAGEMENT

Drexel University

Principal Investigator
Dr. Stephen W. Director,
Senior Vice President and Provost

Project Director
Dr. N. John DiNardo
Vice Provost for Academic Affairs

Associate Project Director
Mr. Stephen R. Cox, Co-PI

Associate Project Director
Ms. Antoinette Torres,
Executive Director
Academic Advising, Retention and
Diversity

Project Coordinator
Ms. Veniece Keene

Administrative Assistant
Ms. Linda Senesombath

ALLIANCE PARTNERS

**Cheyney University of
Pennsylvania**
Dr. Sakkar A. Eva
(610) 399-2349
saeva@aol.com

**Community College of
Philadelphia (CCP)**
Dr. Linda Powell
(215) 751-8554
lpowell@ccp.edu

Delaware State University
Dr. Beverly Karplus Hartline
(302) 857-6500
bhartline@desu.edu

Drexel University
Ms. Marisol Rodriguez
(215) 895-1641
mr44@drexel.edu

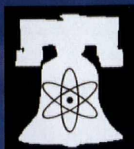
**Lincoln University of
Pennsylvania**
Dr. Robert Langley
(610) 932-1074
langley@lu.lincoln.edu

**New Jersey Institute of
Technology (NJIT)**
Mr. Laurence Howell
(973) 596-3690
howell@adm.njit.edu

Temple University
Dr. Bruce Conrad
(215) 204-2896
Bruce.Conrad@temple.edu

University of Delaware
Mr. Michael Vaughan
(302) 831-2403
vaughan@udel.edu

University of Pennsylvania
Ms. Cora Ingram
(215) 898-7084
ingrum@seas.upenn.edu



Philadelphia AMP / Greater Philadelphia Region

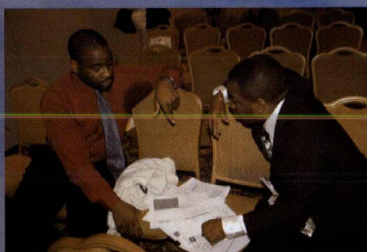
Louis Stokes Alliance for Minority Participation
Drexel University, 3141 Chestnut Street, Bldg. 1, Room 308, Philadelphia, PA 19104
Phone: (215) 895-2203 Fax: (215) 895-2098 Web: <http://www.philadelphiaamp.org>

10th Annual Philadelphia AMP Research Symposium and Mentoring Conference

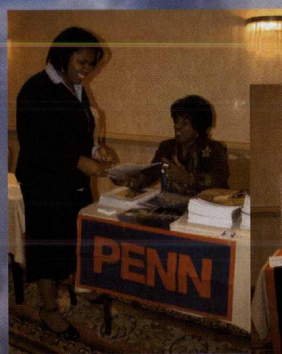
On October 14, 2006, Philadelphia AMP hosted its 10th Annual Philadelphia AMP Research Symposium and Mentoring Conference to showcase the recent accomplishments of AMP students. The event also promoted faculty and student engagement and exposed students to graduate school opportunities at partner institutions. Dr. Carol Scarlett, Research Physicist, Brookhaven National Laboratory, was the keynote speaker for the Symposium. Dr. Bob Epps, Chief Technologist, Lockheed Martian was the Awards Luncheon Speaker. Bridge to the Doctorate students also presented their research during the oral graduate competition.



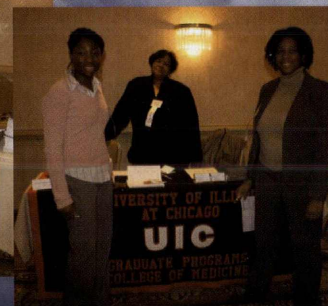
Conference presenters, judges, speakers, faculty and administrators.



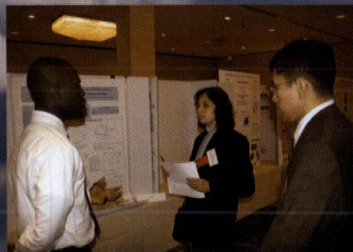
BTD student reviews presentation with his research mentor during the graduate oral competition.



AMP students interact with recruiters during the graduate school fair.



AMP student discusses his research project with conference judges during the undergraduate poster competition.



The Puerto Rico Louis Stokes



Alliance for Minority Participation

The Puerto Rico LSAMP program started its Phase IV in August 2006. For the next five years, undergraduate and graduate STEM students from participating institutions will benefit from: Sustained mentored research experiences; undergraduate to graduate bridging program to enhance their academic preparation for graduate school; the Puerto Rico Interdisciplinary Scientific Meeting (PRISM); and a series of Scientific Conferences to expose STEM students to role models in frontier research areas. Puerto Rico LSAMP will continue to sponsor in the Fall the Annual Best Practices Conference on Teaching and Learning and in the Spring the Transdisciplinary Research Conference. Join us by visiting our website at WWW.PRLSAMP.ORG.



University of Puerto Rico

UPR-Aguadilla
Prof. Migdalia Sotomayor
(787)890-2681 x-226
migsotomayor@yahoo.com

UPR-Mayaguez
Prof. Jeannette Santos
(787)832-4040 x-2398
jsantos@ece.uprm.edu

UPR-Arecibo
Dr. Maiella Ramos
(787)878-2830
maiellaramos2001@yahoo.com

UPR-Cayey
Prof. Luis Perez
(787)738-2161 x-2166
lperez12@hotmail.com

UPR-Humacao
Dr. Denny Fernandez
(787)850-9388
d_fernandez@webmail.uprh.edu

UPR-Rio Piedras
Dr. Noemi Cintron
(787)764-0000 x-4729
Ncintron@caribe.net

UPR-Bayamon
Prof. Orlando Gonzalez
(787)786-2885
Ogonzalez@prdigital.com

UPR-Ponce
Prof. Lizzette Roig
(787) 844-8181 x-2335
Quim@cutpo.upr.clu.edu



Inter American University

UIA-Bayamon
Prof. Rafael Canales
(787)279-1912 x-2115
rccanales@bc.inter.edu

UIA-Metro
Dra. Rosa Brito
(787)250-1912 x-2142
rbrito@metro.inter.edu



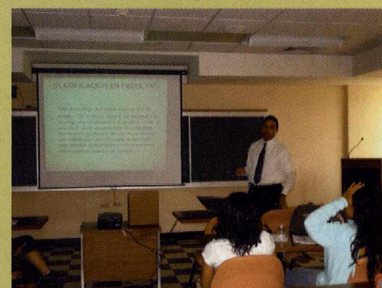
Pontifical Catholic University

Prof. Carmen Asencio
(787)841-2000
casencio@pucpr.edu

Sustained Mentored Research Experiences



Undergraduate to Graduate Bridging Component



Academic
↔
Excellence

**BDP
Fellows**



**2006 Field
Trip to
Vieques**

The Annual PR-LSAMP Best Practices Conference on Teaching and Learning



2006 Speakers and PR-LSAMP Staff

The Annual Transdisciplinary Research Conference



Group of local researchers and invited speakers

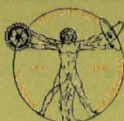
The Annual Puerto Rico Interdisciplinary Scientific Meeting (PRISM)



Dr. Kurt Gibble
Penn State University

UPR-Resource Center for Science and Engineering

Coordinated by:



PI: Dr. Manuel Gómez
Co-PI: Dr. Ana C. Piñero

(787) 764-8369
(787) 764-8369

Email: mgomez@upr.edu
Email: a_pinero@prlsamp.org

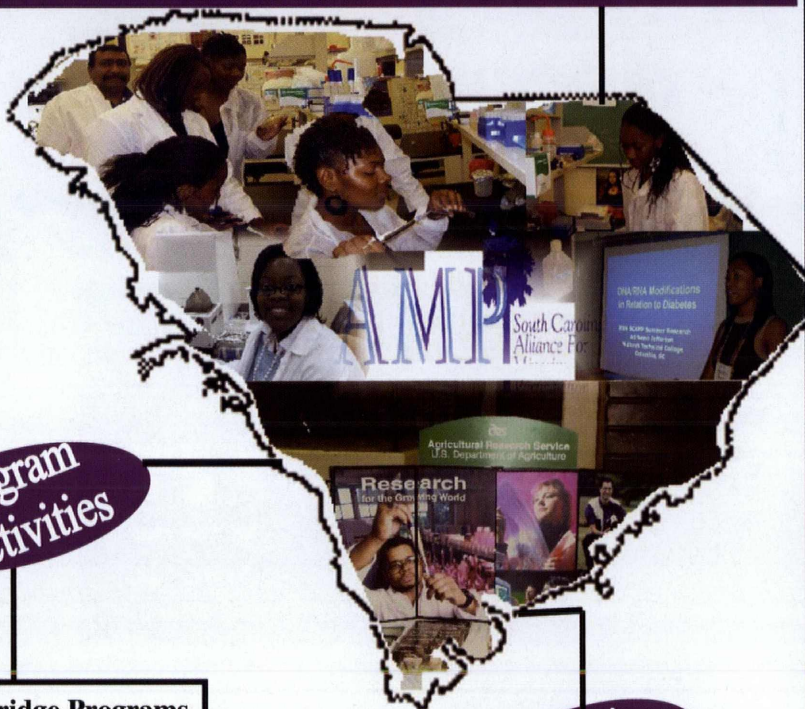


THE LOUIS STOKES

SOUTH CAROLINA ALLIANCE FOR MINORITY PARTICIPATION PROGRAM

Dr. Andrew Hugine, Jr., Principal Investigator
 Dr. Judith Salley-Guydon, Executive Program Director

The Louis Stokes-South Carolina Alliance for Minority Participation Program (LS-SCAMP) is one of the oldest and most successful alliances established in the state of South Carolina. Organized in 1992 and restructured in 2002, the LS-SCAMP program is a collaborative effort between the National Science Foundation (NSF) and twelve institutions in South Carolina. These partner institutions have a longstanding history of collaboration and considerable experience in developing educational programs to increase the quality and quantity of underrepresented minority students who successfully complete STEM baccalaureate degree programs and who pursue related graduate degrees. Currently, 71% of the state of South Carolina's STEM Minority BS Degrees are produced by SCAMP institutions.



Program Activities

- Summer Bridge Programs
- Undergraduate Research
- Graduate School Prep Workshops
- Mentoring Programs
- Scientific Seminar
- Research Courses
- Calculus Excellence Workshops
- Science and Engineering Research Conference

Governor's Board



Dr. A. James Hicks, LSAMP Program Director and Dr. Andrew Hugine, Jr., President/Principal Investigator at the Annual Governor's Board Meeting on March 20, 2006

Lead Institution

South Carolina State University
 Dr. Andrew Hugine, Jr., Principal Investigator
 (803) 536-7013
 president@scsu.edu

Alliance Partners:

Allen University
 Dr. Patrick Inyangetor (803) 376-5700
 pinyangetor@allenuiversity.edu

Benedict College
 Dr. Stacey Franklin Jones (803) 705-4548
 jones@benedict.edu

Claflin University
 Dr. Angela Peters (803) 535-5447
 angela.peters@claflin.edu

Clemson University
 Ms. Sue Lasser (864) 656-5541
 slasser@ces.clemson.edu

College of Charleston
 Dr. Dinesh Sarvate (843) 953-5736
 sarvated@cofc.edu

Morris College
 Dr. Radman Ali (803) 934-3266
 rali@morris.edu

South Carolina State University
 Mr. Nathaniel Gant (803) 536-8184
 ngant@scsu.edu

University of South Carolina
 Dr. Michael Perkins (803) 777-4177
 perkins@enr.sc.edu

Voorhees College
 Dr. Rachid Bendidi (803) 703-7155
 rbendidi@voorhees.edu

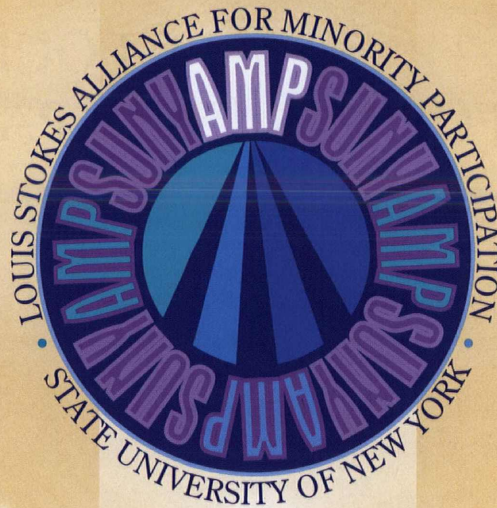
Two-Year Technical Colleges:

Denmark Technical College
 Dr. Jacqueline Skubal

Midlands Technical College
 Mr. Rick Bailey (803) 738-7618
 BaileyR@midlandstech.edu

Orangeburg Calhoun Technical College
 Mr. Walt Tobin (803) 536-0311
 tobins@octech.edu

SCAMP WEB ADDRESS
<http://scamp.scsu.edu>



David Ferguson, Project Director, (631) 632-9987, e-mail: David.Ferguson@stonybrook.edu
Lucy Gluck, System Coordinator, (631) 632-9988, e-mail: Lucille.Gluck@stonybrook.edu
Web Site: www.stonybrook.edu/sunylsamp

Identifying Best Practices in UREP STEM Education

As the State University of New York Louis Stokes Alliance for Minority Participation (SUNY LSAMP) completes Phase II and enters Phase III, the Alliance continues to increase student enrollment, degree production, and entrance to graduate school. Since its inception in 1996, SUNY LSAMP has increased underrepresented minority (UREP) science, technology, engineering, and mathematics (STEM) enrollment by 266 percent and bachelor degree production by 86 percent. This year we have added our first Bridge to the Doctorate program at Stony Brook University, the lead institution of the Alliance. In addition, SUNY LSAMP has taken a leadership role in continuing to expand the research about best practices in UREP STEM education.



minority undergraduates, graduate students, post-doctoral fellows, and faculty members in STEM disciplines. Special attention was given to exploring factors influencing decisions to move along paths leading to the professoriate. Study recommendations included improved orientation activities, strengthening support programs for minority graduate students, and improving faculty development activities so faculty can be better advisors and mentors to their students.

SUNY LSAMP Phase III Research Project

SUNY LSAMP has developed a new research project that will have two main foci: It will examine the structures and processes required to provide a model for the delivery and administra-

tion of support services; and it will identify the various factors, attitudes, and experiences that lead UREP STEM students to graduate school and on to the professoriate. The experiences of the SUNY LSAMP alliance along with further research will lead to a model for planning academic and personal support and successful strategies and encourage progression to graduate study for minority students in a variety of educational settings.

Services include:

- Scholarship and stipend support
- Workshops and tutoring in science, technology, engineering, and mathematics disciplines
- Mentoring programs that link faculty and staff to students
- Paid research and internship opportunities
- Opportunities for students to attend professional conferences and present the results of their research
- Assistance to students in preparing for and applying to graduate programs
- Innovative enrichment courses and program models
- Research and scholarship about UREP STEM issues

CASEE Project

In partnership with SUNY Alliance for Graduate Education and the Professoriate (AGEP), Dr. LaRuth McAfee was selected as the first Postdoctoral Engineering Education Researcher (PEER) under the Center for the Advancement of Scholarship on Engineering Education (CASEE) of the National Academy of Engineering. The CASEE study sought to determine key factors influencing the career choices and experiences of underrepresented

SUNY LSAMP Institutions

Albany Region • Carson Carr, *Director* • (518) 442-5180 • ccarr@uamail.albany.edu • University at Albany • Schenectady Community College

Binghamton Region • Cynthia Sedgwick, *Director* • (607) 777-6204/(607) 777-4881 • csedg@binghamton.edu

University at Binghamton • Broome Community College • Tompkins Cortland Community College **Buffalo Region** • Drexel Gidney and John Staley, *Co-Directors* (716) 645-2774/(716) 645-6966 • gidney@eng.buffalo.edu • jstaley@acsu.buffalo.edu • University at Buffalo • Buffalo State College

Hudson Valley Region • Stacie Swingle Nunes, *Director* • (845) 257-2695 • nuness@newpaltz.edu • College at New Paltz • Ulster County Community College

Dutchess County Community College • Orange County Community College **Long Island Region** • David Ferguson and Henry Teoh, *Co-Directors* (631) 632-8763/(516) 876-2753 • David.Ferguson@stonybrook.edu • hteoh@verizon.net • Stony Brook University • College at Old Westbury

Farmingdale State University • Nassau County Community College • Suffolk County Community College



TENNESSEE LOUIS STOKES ALLIANCE FOR MINORITY PARTICIPATION

PRINCIPAL INVESTIGATOR
Dr. Melvin Johnson, President

EXECUTIVE DIRECTOR
Lonnie Sharpe, Jr.

ASSISTANT COORDINATOR
Shelia Maxwell

PARTNERS



LeMoyné-Owen College
Muhammad Shafi
901-435-1386
Muhammad_shafi@loc.edu



Middle Tennessee State University
Thomas Cheatham
615-898-5508
cheatham@mtsu.edu



Tennessee State University
Lonnie Sharpe, Jr.
615-963-1398
sharpe@coe.tsuniv.edu



University of Memphis
Henry Kurtz
901-678-3067
hkurtz@memphis.edu



University of Tennessee – Knoxville
Denise Jackson
865-974-0625
djackson@utk.edu



Vanderbilt University
K. Arthur Overholser
615-343-3773
k.a.overholser@vanderbilt.edu

www.tnstate.edu/tlsamp
(615) 963-1398

The Tennessee Louis Stokes Alliance for Minority Participation (TLSAMP) emphasizes collaborative learning approaches, mentoring activities via faculty, staff, and upper level students, and hands-on research and internship experiences. Many students across the Alliance participate in these and other retention programs every year. However, there are three TLSAMP initiatives that our Alliance stresses. They are the Summer Research, the Summer Bridge, and the Research Symposium.

The Summer Research...

Students are involved in research at an Alliance institution under the guidance and direction of research faculty. Their research consists of independent explorations, cooperative learning, and composition and synthesis of data into a viable presentation. Students receive a stipend from the host institution as well as an additional allowance from TLSAMP.



The Summer Bridge ...

This program is an outreach effort that is used to ease the transition from high school to college. It provides the students with the tools necessary for them to successfully complete the freshman year curriculum. Students strengthen and enhance their analytical skills in mathematics and science and are introduced to time management and leadership skills concepts.

The Research Symposium...

Students meet and share successes and solutions to problems encountered while pursuing STEM related careers at the annual research conference. The symposium is used to motivate other TLSAMP students to pursue graduate degrees in STEM disciplines. The students are also exposed to successful managers, scientists, and engineers from our professional and legislative communities.





TAMU System ♦ Louis Stokes Alliance for Minority Participation



2005-2006 Alliance Partners: Texas A&M University (TAMU), Texas A&M University – Corpus Christi (TAMUCC) and Prairie View A&M University (PVAMU)

www.tamulsamp.org

The Texas A&M University System (TAMUS) Louis Stokes for Minority Participation (LSAMP) is composed of 3 partners striving to (1) significantly increase the number of Underrepresented Minority (URM) Science, Technology, Engineering and Mathematics (STEM) BS degree completions, (2) to increase the progression of LSAMP students into STEM graduate programs, and (3) increase enrollment and retention of URM STEM students along the way to achieving the first two goals. The objectives to support the goals of the alliance are:

- ✗ Pipeline Repair
- ✗ Student Development
- ✗ Articulation with Graduate Schools, K-12 Teachers and Professionals in STEM Careers

2005-2006 ALLIANCE ACCOMPLISHMENTS

- ✗ TAMUS LSAMP URM enrollment increased by 5%.
- ✗ TAMUS LSAMP URM graduation rates have continually increased each academic year.

HIGHLIGHTS

Texas A&M University – Corpus Christi Sigma Xi Research Symposium

TAMUCC LSAMP completed another successful Sigma Xi Distinguished Lecture and Undergraduate Research Symposium, their 6th Annual. There were 18 student poster presentations, all of high quality.

The annual research symposium was established so that undergraduate students doing research have an opportunity to present their work prior to presenting at state, regional, national and international conferences.



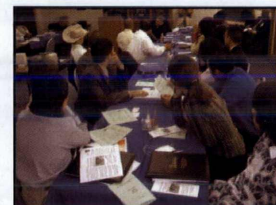
Sigma Xi Research Symposium Participants

2nd Annual Mini-Symposium

The TAMUS LSAMP 2nd Annual Mini-Symposium was held in conjunction with the TAMUS Pathways Symposium on the campus of Texas A&M University – Kingsville. TAMUS LSAMP students and BTDF Fellows participated in both conferences and interacted with a number of distinguished guests, such as Anthony Harris, entrepreneurial and founder of the National Society of Black Engineers. The peer-to-peer relationship building, cross institutional community building and networking succeeded in whetting students' appetites to pursue graduate studies and pursue research relationships with faculty members and other students with whom they share research interest.



Anthony Harris



Mini-Symposium

PRINCIPAL INVESTIGATOR



Dr. Karan Watson
Associate Provost,
Texas A&M University
watson@tamui.edu
(979) 845-4274

Dr. Leo Sayavedra, Co PI
Deputy Chancellor
TAMU System
L-Sayavedra@tamui.edu
(979) 458-6070

Dr. Milton Bryant, Co PI
Dean of College of Engineering
Prairie View A&M University
M-Bryant@pvamu.edu
(936) 857-2070

Dr. Diana Martinez, Co PI
Professor of Bio-Chemistry
TAMU-Corpus Christi
Diana.martinez@tamucc.edu
(361) 825-2350

Dr. John Ciardino
Dean of Graduate Studies
Texas A&M University
rickc@tamui.edu
(979) 845-3631

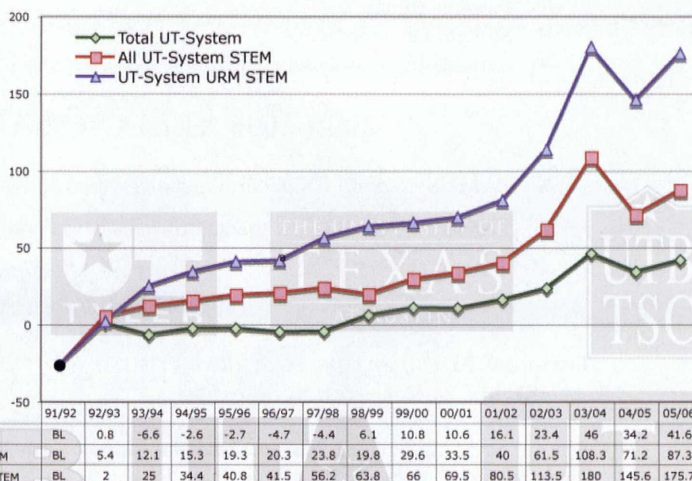
TAMUS AMP Central

Dr. Karen Butler-Purry
Project Director
Professor of Electrical Engineering
Texas A&M University
kbutler@ece.tamui.edu
(979) 847-9048

Ms. Shannon Henderson
Associate Director
Texas A&M University
shannon@tamui.edu
(979) 862-4315

The University of Texas System LSAMP has brought together the nine academic components of The University of Texas System in an effort to increase the number of underrepresented minority students enrolling in and graduating from baccalaureate programs in science, technology, engineering and mathematics (STEM). An additional goal of the alliance has been to increase the number of underrepresented minority students in STEM graduate programs at UT-System institutions. Emphasis in Phase III is on increasing graduate opportunities for underrepresented minority individuals at Alliance institutions, particularly at the doctoral level.

In the past year, the number of underrepresented minority graduates in UT System STEM disciplines has increased by 176% from the baseline value in 1992. The initial LSAMP program goal was set at 1,374 graduates. As of 2006, the total number of graduates has reached 1,555. We are proud of this statistic because the UT System has contributed to increasing the total number of underrepresented minorities receiving STEM degrees at the national level.



Legend:
 - Total UT-System (Green diamond)
 - All UT-System STEM (Red square)
 - UT-System URM STEM (Blue triangle)



University Partners: UT Arlington Martha Mann [mann@uta.edu](mailto:manna@uta.edu) (817) 272-3239 ♦ UT Austin Sarah Simmons and Pedro Reyes (Co-PI) simmons@mail.utexas.edu (512) 232-2874; preyes@utsystem.edu (512) 322-2789 ♦ UT Brownsville Fabio Urbani urbani@utb.edu (956) 882-6650 ♦ UT Dallas Gerald Burnham burnham@utdallas.edu (972) 883-2977 ♦ UT El Paso Benjamin C. Flores (PI) and Ariana Arciero bflores@utep.edu (915) 747-5470; avarcier@utep.edu (915) 747-8725 ♦ UT Pan American Miguel Paredes mparedes@panam.edu (956) 381-2290 ♦ UT Permian Basin Doug Hale hale_d@utpb.edu (432) 552-2873 ♦ UT San Antonio Manuel Maldonado manuel.maldonado@utsa.edu (210) 458-2766 ♦ UT Tyler Stephen Rainwater Steve_Rainwater@mail.uttyl.edu (903) 566-7235

Community College Partners: Alamo Community College District David Chavera dchavera@accd.edu (210) 733-2458 ♦ Collin County Community College District ♦ El Paso Community College Emil Michal emilm@epcc.edu ♦ Howard College Amber Buske abuske@howardcollege.edu ♦ Midland College Kay Hodge khodge@midland.edu (432) 685-4621 ♦ Odessa College Shirley Payne spayne@odessa.edu ♦ Tarrant County College Larry Darlage Larry.darlage@tccd.edu (817) 515-6200

UT System LSAMP website: <http://research.utep.edu/lisamp>

LOUIS STOKES ALLIANCE FOR MINORITY PARTICIPATION

University of Maryland, Baltimore County
 University of Maryland, College Park
 University of Maryland Eastern Shore

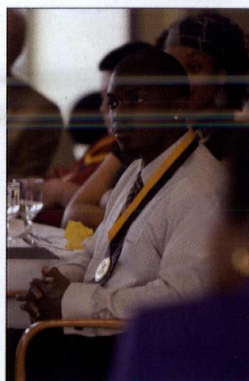


USM LSAMP is a comprehensive program that is designed to increase the quantity and quality of minority and other students receiving baccalaureate degrees in science, technology, engineering, and mathematics (STEM) fields.

- Alliance institutions awarded 5,451 STEM baccalaureate degrees to minority students, 1995-2006, and 1,723 junior and senior minority students majoring in STEM fields enrolled for 2005-2006.
- Alliance institutions awarded 734 STEM master's degrees to minority students, 1995-2006.
- Alliance institutions awarded 202 Ph.D. degrees to minority students, in STEM fields, 1995-2006.
- Many LSAMP students advance to the nation's top graduate programs.
- Many LSAMP students have summer placements in laboratories conducting cutting-edge research.

Program Highlights:

- Undergraduate research
- Academic Support
- Scholarship Support
- Mentoring
- Summer Bridge
- Conference presentations
- Monitoring and Tracking
- Math Bridge
- College and lab visits
- Cultural Enrichment
- Community Service
- Bridge to the Doctorate



CONTACT INFORMATION:

UMBC

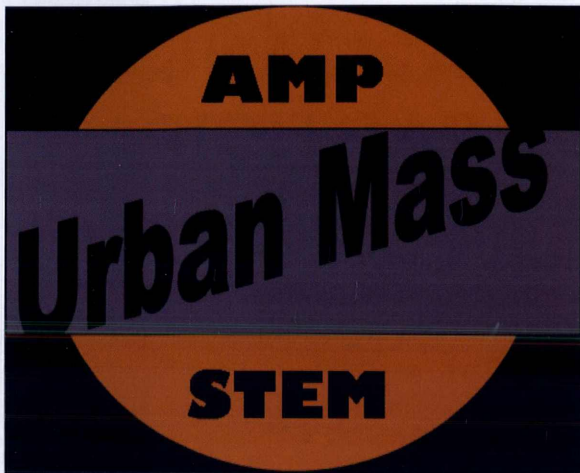
Cynthia M. Hill
 Associate Provost
 chill@umbc.edu
 410-455-2445

UMCP

Tamara N. Hamilton
 Program Coordinator
 hamiltot@umd.edu
 301-405-3882

UMES

Carla R. Bailey
 Program Coordinator
 crbailey@mail.umes.edu
 410-651-7969



Urban Massachusetts Louis Stokes Alliance for Minority Participation

LEAD INSTITUTION

Paul Fonteyn, Principal Investigator
617-287-5603, paul.fonteyn@umb.edu

Marshall Milner, LSAMP Program Director
617-645-8313, marshall.milner@umb.edu

UMLSAMP Website in Development
<http://mysite.verizon.net/milnerm>

University of Massachusetts Boston
100 Morrissey Boulevard
Boston, MA 02125-3393

ALLIANCE MEMBERS

University of Massachusetts Boston
Joan Becker, Co-PI
617-287-5841, joan.becker@umb.edu

University of Massachusetts Dartmouth
Bruce Rose
508-999-8712, brose@umassd.edu

University of Massachusetts Lowell
Joyce Gibson
978-934-4618, joyce_gibson@uml.edu

Wentworth Institute of Technology
Sandra Pascal
617-989-4478, pascals@wit.edu

Bristol Community College
Karen Dixon
508-678-2811, kdixon@bristo.mass.edu

Bunker Hill Community College
S. Len Mhlaba
617-228-2032, smhlaba@bhcc.mass.edu

Middlesex Community College
Mary Anne Dean
781-280-3580, deanm@middlesex.mass.edu

Roxbury Community College
Brenda Mercomes
617-541-5383, brendam@rcc.mass.edu

MISSION

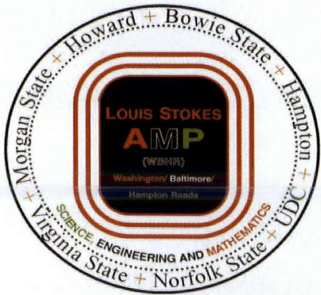
The Urban Massachusetts Louis Stokes Alliance for Minority Participation (UMLSAMP) within its alliance of eight member institutions will increase the quality and quantity of underrepresented minority students completing baccalaureate degrees in science, technology, engineering, and mathematics (STEM) fields. The UMLSAMP students and faculty will collaborate with the vibrant 21st century industries in the state of Massachusetts to provide high quality technical and research training and career opportunities for regional and national competitive advantages.

ACTIVITIES, SERVICES, & PROGRAMS

- Learning Communities
- Summer Bridge Programs
- Summer and Academic Year Research Programs
- Facilitated Study Groups
- Peer and Faculty Mentoring
- Practicing Professionals Coaching
- Career Fairs and Advisement
- Graduate School Preparation

ALLIANCE PARTNERSHIPS

The Urban Massachusetts Louis Stokes Alliance for Minority Participation will seek and grow collaborations with PK-12 local school districts; nonprofit STEM related organizations, and corporations committed to effectively establish and support the 'Pipeline' of motivated young people who will attain their education and training in our state and in our and other institutions of higher learning.



Washington/Baltimore/Hampton Roads- Louis Stokes Alliance for Minority Participation Program (WBHR-LSAMP)

www.howard.edu/lsamp

HISTORY And GOALS

**Principal Investigator
Provost and Chief Academic Officer
Dr. Richard A. English**

**Executive Director/Co-PI
Dr. Clarence M. Lee**

**Office Mgr/ Admin. Assistant
Ms. Reba Brewington
202-238-2512**

**Data Analyst/Spec Asst
Ms. Ella Kent
202-238-2510**

Partner Institutions

Howard University
Dr. William Gordon
202-238-2511/2512
wgordon@howard.edu

Bowie State University
Dr. Elaine Davis
301-860-3329
edavis@bowiestate.edu

Hampton University
Dr. Elaine Eatman
757-727-5278
Elaine.eatman@hamptonu.edu

Morgan State University
Dr. John Wheatland
443-885-3864
jawjr@eng.morgan.edu

Norfolk State University
Dr. Sandra Deloatch
757-823-8561
sdeloatch@nsu.edu

Virginia State University
Dr. Dilip Sen
804-524-5732
dsen@vsu.edu

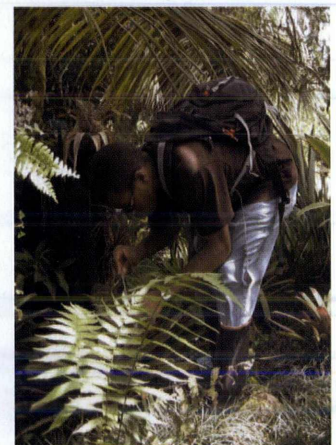
University of the District of Columbia
Dr. Ester Ososanya
202-274-4631
eososanya@udc.edu

The Washington Baltimore Hampton Roads Alliance for Minority Participation (WBHR-LSAMP) Program includes Howard University as the lead institution with Morgan State University, Bowie State University, the University of the District of Columbia, Hampton University, Norfolk State University, and Virginia State University as partners. Over the past twelve years, more than 50,400 minority students have enrolled in science, technology, engineering and mathematics (STEM) fields at this WBHR Alliance. More than 9,931 students have graduated from these institutions with B.S. degrees in STEM fields. The overall objective of this program is to ensure that the WBHR-LSAMP students are exposed to career opportunities in the STEM fields. Our greatest goal is to stimulate many of these students to pursue careers at the doctorate level.

The WBHR-LSAMP program supports undergraduate research students. The overall objective of this program is to assure that the LSAMP student has well-rounded research opportunities. Students are expected to participate in research activities during the summers and the academic year at their home institutions, at other research universities and in industrial or national laboratories. The overall goal of the program is to encourage minority students to pursue doctoral degrees in STEM fields and to become involved in research careers. During the 2005-2006 academic years, among other efforts, the WBHR-LSAMP provided junior/senior level students with research opportunities during the first and second semesters and summer; conducted specialized classes through the Cisco Networking Academy; organized a special video-conferencing course for students in gate-keeping courses (biology, calculus, chemistry and physics); provided financial assistance to STEM students during the fall and spring semesters; and facilitated the transfer of community college students into STEM programs at WBHR institutions.

Spotlight on WBHR-LSAMP Students

Thomas Hardy is currently a first-year Biology major in the Bridge to the Doctorate Program at Howard University. As an undergraduate AMP student, he spent the summer of 2004 conducting research at the Organization for Tropical Studies (OTS) Las Cruces Field Station in Costa Rica. During the summer of 2006, Mr. Hardy returned to Costa Rica and completed a course in Tropical Plant Systematics. He also performed research on the aquatic communities of three phytotelmic (water-holding plants), a species of *Heliconia* and two species of bromeliads. While in Costa Rica, he served as a research mentor for two undergraduate students of the NSF/OTS sponsored Native American and Pacific Islander Research Experience (NAPIRE) Program. Nicole Ramsey also conducted research abroad in summer 2006. She conducted research on malaria in Mali.



Thomas Hardy conducts research in Costa Rica

**WBHR Supports Student Research
Students perform research**



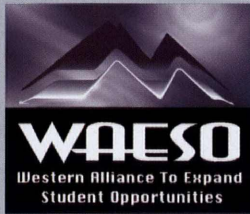
Carmen Baptiste at research on a Microscope at Virginia State University



Nakiesha Bridgers examines a horned lizard



Nicole Ramsey performs research in Mali



WESTERN ALLIANCE TO EXPAND STUDENT OPPORTUNITIES WAESO

<http://www.asu.edu/WAESO> Email: waeso@asu.edu

THE NATIONAL SCIENCE
FOUNDATION



WAESO is sponsored in part by
a cooperative agreement with the
National Science Foundation (NSF).

The LSAMP-Western Alliance to Expand Student Opportunities (WAESO) is now engaged in Phase IV of operations. After exceeding our goals of doubling the number of baccalaureate degrees per year within the STEM disciplines during Phases I, II and III, our goal for Phase IV is to once again, double the number of graduates within our region. WAESO will continue to increase the quality and quantity of underrepresented minority students receiving degrees in science, mathematics, engineering, and technology throughout our region which includes institutions in Arizona, Colorado, New Mexico, western Texas (El Paso Community College), Nevada and Utah.

LSAMP - WAESO activities in which students participated include:

- peer study groups (local and over the Internet)
- summer bridge programs
- faculty-directed undergraduate research projects
- graduate preparation institutes, mentoring, and research conference



MGE@MSA/WAESO students presenting their posters at the Annual Student Research Conference on April 21st, 2006 at Arizona State University.

Supported in part by a grant from the Alliance for Graduate Education and the Professorate (AGEP) program of the National Science Foundation (NSF), WAESO held its joint Annual Student Research Conference in conjunction with its partner AGEF alliance, More Graduate Education at Mountain States Alliance (MGE@MSA), on April 21st, 2006 at Arizona State University. Hundreds of undergraduate and graduate students within the STEM disciplines presented their research posters and participated in a series of presentations and exhibits especially designed to encourage and facilitate their pursuit of doctoral studies in science, technology, engineering and mathematics leading to careers in academe and government research laboratories.

WAESO Participating Institutions

Arizona:

- Arizona State University
- Cochise College
- Maricopa Community College System
- Dine (Tsaiile Campus)
- Pima Community College
- University of Arizona

New Mexico and Western Texas:

- Eastern New Mexico University
- Dine College
- New Mexico Highlands University
- New Mexico Institute of Mining and Technology
- Northern New Mexico Community College
- Santa Fe Community College
- University of New Mexico
- Western New Mexico University
- El Paso Community College

Nevada:

- Northern Nevada Community College
- University of Nevada, Las Vegas
- University of Nevada, Reno

Colorado:

- Community College of Aurora
- Mesa State College
- Pikes Peak Community College
- Pueblo Community College
- Regis University

Utah:

- Brigham Young University
- Salt Lake Community College
- Southern Utah University
- University of Utah
- Utah State University
- Utah Valley State College
- Weber State University

WAESO CONTACT INFORMATION

Dr. Antonio García
Project Director and Principal Investigator /
Associate Director, Hispanic Research Center
Ira A. Fulton School of Engineering/ Professor
of Bioengineering,
Harrington Department of Bioengineering
Arizona State University
(480) 965 - 0840



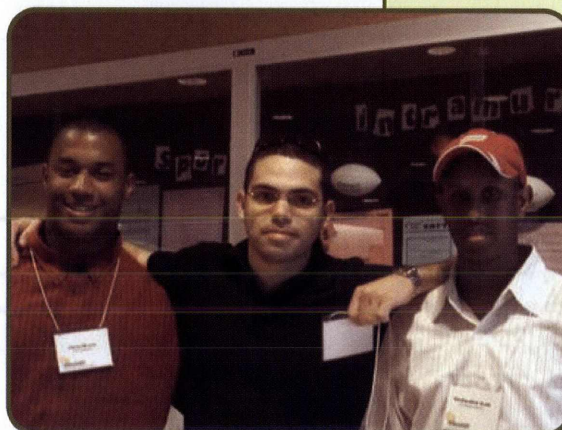
THE **WISCONSIN ALLIANCE FOR MINORITY PARTICIPATION** or **WiscAMP** is a consortium of 21 colleges and universities throughout Wisconsin that aims to double the number of underrepresented minorities who receive bachelor's degrees in the STEM disciplines within five years.

WiscAMP addresses retention and persistence of underrepresented minorities in STEM disciplines by expanding and improving on successful models already in place and fostering and sustaining an alliance among partner institutions.



Highlights from WiscAMP:

- To date, the Small Grants program has funded fifteen new projects throughout the alliance for a total of \$220,309.
- Four students from Madison Area Technical College participated in the Southwest Region's Assistantship program. One of these students transferred this Fall to UW-Madison and will be majoring in an Engineering discipline.
- Alverno College held an informational luncheon for students who had not declared a major as a recruitment tool for STEM disciplines.
- A group of five students, all from the first cohort of WiscAMP scholars presented their posters alongside the Graduate Engineers Research Scholars (GERS) at the annual GERS banquet.



Member Institutions:

College of Menominee Nation
Nicolet Area Technical College
Milwaukee Area Technical College
Madison Area Technical College

Alverno College
Beloit College
Lawrence University
Marquette University

UW-Eau Claire
UW-Green Bay
UW-La Crosse
UW-Madison
UW-Milwaukee
UW-Oshkosh
UW-Parkside
UW-Platteville
UW-River Falls
UW-Stevens Point
UW-Stout
UW-Superior
UW-Whitewater

PI: Patrick Farrell

Co-PI: Molly Carnes

Co-PI: Douglass Henderson

Director: Manuela Romero

Contact Information:

UW-Madison
2640 Engineering Hall
1415 Engineering Drve
Madison, WI 53706-1619
Phone: (608) 262-7764
Fax: (608) 265-5290

email: wiscamp@engr.wisc.edu
<http://wiscamp.engr.wisc.edu>



Testimonials from WiscAMP students

"I was struggling with this class somewhat before the CLC and now I feel really good about it."

"I can't wait to do another summer research project!"

"I never knew there were Hispanics with PhDs; I never imagined there were so many Hispanics studying for their PhD, there are so many here."

Transforming Institutional Culture to Support and Sustain Diversity

LSAMP DIRECTORY

NATIONAL SCIENCE FOUNDATION

4201 Wilson Boulevard
Arlington, VA 22230

Dr. Arden L. Bement, Jr.
Director
(703) 292-8000 • (703) 292-9232 (Fax)
abement@nsf.gov

Dr. Cora Marrett
Assistant Director
Directorate for Education and Human Resources
(703) 292-8600 • (703) 292-9179 (Fax)
cmarrett@nsf.gov

Dr. Victor A. Santiago
Deputy Division Director
Division of Human Resource Development
(703) 292-4673 • (703) 292-9018 (Fax)
vsantiago@nsf.gov

PROGRAM DIRECTOR

Dr. A. James Hicks
(703) 292-8640 • (703) 292-9019 (Fax)
ahicks@nsf.gov

LSAMP Lead Program Assistant
Margie Johnson
(703) 292-7007 • (703) 292-9018 (Fax)
mcjohnso@nsf.gov

PRINCIPAL INVESTIGATORS

Alabama LSAMP

Dr. Louis Dale
Vice President for Equity and Diversity
The University of Alabama at Birmingham
401 Campbell Hall • 1300 Univ. Blvd.
1530 3rd Avenue South
Birmingham, AL 35294-1170
(205) 934-8762 • (205) 934-1650 (Fax)
ldale@uab.edu
Project Manager
Dr. M. Carolyn Braswell
(205) 934-8762 • (205) 934-1650 (Fax)
cbraswel@uab.edu

All Nations LSAMP

Ms. Zetra Wheeler
Salish Kootenai College
P.O. Box 70
52000 Highway 93
Pablo, MT 59855
(406) 275-4800 • (406) 275-4807 (Fax)
zetra_wheeler@skc.edu
Project Director
Steve Dupuis
(406) 275-4996 • (406) 275-4807 (Fax)
steve_dupuis@skc.edu

California LSAMP

Dr. Michael V. Drake
University of California, Irvine
The Chancellor's Office
510 Administration
Irvine, CA 92697-1900
(949) 824-5111 • (949) 824-2087 (Fax)
chancellor@uci.edu
Project Manager
Marjorie DeMartino
(949) 824-4813 • (949) 824-3048 (Fax)
dmartino@uci.edu

California State University LSAMP

Dr. Joseph Sheley
California State University, Sacramento
6000 J Street, SQU 534
Sacramento, CA 95819-6124
(916) 278-3838 • (916) 278-3854 (Fax)

sheleyj@csus.edu
Project Director
Dr. Juanita Barrena
(916) 278-6519 • (916) 278-4640 (Fax)
jbarrena@csus.edu

Colorado LSAMP

Dr. Omnia El-Hakim
University Executive Director of Recruitment and Retention
Graduate School
Colorado State University
Engr. Bldg. E-118, 1301 Campus Delivery
Fort Collins, CO 80523-1301
(970) 491-2656 • (970) 491-3421 (Fax)
omnia.elhakim@colostate.edu
Project Coordinator
Elaine Green
(970) 491-2898 • (970) 491-3421 (Fax)
Elaine.green@colostate.edu

Florida-Georgia LSAMP

Dr. Ralph W. Turner
FGLSAMP Central Office
Florida A&M University
1540 South Adams Street, Suite-A
Tallahassee, FL 32307
(850) 561-2467 • (850) 561-2684 (Fax)
Ralph.turner@fam.u.edu
Program Manager
Mr. Byron Greene
(850) 561-2467 • (850) 561-2684 (Fax)
Jackson.greene@fam.u.edu

Georgia LSAMP

Dr. Walter D. Broadnax, President
The Office of the President
Clark Atlanta University
223 James P. Brawley Drive, SW
Atlanta, GA 30314
(404) 880-8500 • (404) 880-8995 (Fax)
wbroadnax@cau.edu
Project Director
Dr. Melvin R. Webb
(404) 880-6978 • (404) 880-6843 (Fax)
mwebb@cau.edu

Houston LSAMP

Dr. John L. Bear, Dean
University of Houston
Natural Sciences & Mathematics
214 Science & Research Bldg. 1
Houston, TX 77204-5008
(713) 743-3755 • (713) 743-8630 (Fax)
jbear@uh.edu
Executive Director
Craig Cassidy
(713) 743-9220 • (713) 743-8630 (Fax)
ccassidy@central.uh.edu

Illinois LSAMP

Dr. Marian Wilson Comer
Chicago State University
Williams Science Center
Room 101A
9501 S. King Drive
Chicago, IL 60628
(773) 995-3296 • (773) 995-2966 (Fax)
m-comer@csu.edu
Project Director
Dr. LeRoy Jones, II
(773) 995-3296 • (773) 995-2966 (Fax)
ljones27@csu.edu

Indiana LSAMP

Dr. Sally K. Mason
Provost and Professor of Biological Science
Purdue University
Hovde Hall, Room 100
610 Purdue Mall
West Lafayette, IN 47907-2040
(765) 494-9709 • (765) 496-2031 (Fax)

sfmason@purdue.edu
Program Manager
Dr. Pamela P. Dale Shaw
(765) 496-7967 • (765) 496-2031 (Fax)
ppshaw@purdue.edu

Islands of Opportunity

Dr. Rose Tseng
University of Hawaii at Hilo
200 W. Kawili St.
Hilo, HI 96720
(808) 974-7444 • (808) 933-3304 (Fax)
rtseng@hawaii.edu
Program Director
Dr. Dan Brown
(808) 974-7468 • (808) 974-7737 (Fax)
dbrown@hawaii.edu

Kentucky-West Virginia LSAMP

Dr. Lee T. Todd, President
University of Kentucky
101 Main Building
Lexington, KY 40506-0032
(859) 257-1701 • (859) 257-1760 (Fax)
ltodd@email.uky.edu
Co-Principal Investigator
Dr. Ingrid St. Omer
(859) 257-6143 • (859) 257-3092 (Fax)
istomer@engr.uky.edu

Louisiana LSAMP

Dr. Diola Bagayoko
Southern University and A&M College
Department of Physics
P.O. Box 11776
Baton Rouge, LA 70813
(225) 771-2730/2777 • (225) 771-4341 (Fax)
bagayoko@aol.com

Michigan LSAMP

Dr. Mary Sue Coleman, President
University of Michigan
Office of the President
2074 Fleming Administration Building
503 Thompson Street
Ann Arbor, MI 48109-1340
(734) 764-6270 • (734) 936-3529 (Fax)
marysuec@umich.edu
Project Director
Dr. Levi T. Thompson
(734) 936-2015 • (734) 763-0459 (Fax)
litt@umich.edu

Mid-Eastern LSAMP

Dr. Belinda C. Anderson
Virginia Union University
1500 N. Lombardy Street
Richmond, VA 23220
(804) 257-5835 • (804) 257-5833 (Fax)
bcauderson@vu.edu
Project Director
Dr. Phillip W. Archer
(804) 257-5692 • (804) 354-5945 (Fax)
pwarcher@vu.edu

Mississippi LSAMP

Dr. James Perkins
Jackson State University
P.O. Box 18119
Jackson, MS 39217
(601) 979-2024 • (601) 979-2025 (Fax)
james.perkins@jsums.edu
Project Manager
Joan F. Blanton
(601) 979-2076 • (601) 979-2025 (Fax)
joan.blanton@jsums.edu

New Mexico LSAMP

Dr. William V. Flores
Provost Office
MSC 3445

New Mexico State University
P.O. Box 30001
Las Cruces, NM 88003-8001
(505) 646-2127 • (505) 646-6334 (Fax)
provost@nmsu.edu
Project Director
Dr. Ricardo B. Jacquez
(505) 646-3463 • (505) 646-2960 (Fax)
rjaquez@nmsu.edu

New York City LSAMP

Dr. Neville A. Parker
City College of New York
138th Street & Convent Avenue
Marshak-Building, Room J14
New York, NY 10031
(212) 650-8854 • (212) 650-8855 (Fax)
ampcc@ccnyvm.cuny.edu
Project Manager
Dr. Claude Brathwaite
(212) 650-8854 • (212) 650-8855 (Fax)
clbcc@ccnyvm.cuny.edu

North Carolina LSAMP

Dr. Janice G. Brewington
Interim Provost/Vice Chancellor for Academic Affairs
North Carolina A&T State University
Dowdy Administration Building
1601 E. Market Street
Greensboro, NC 27411
(336) 334-7695 • (336) 334-7136 (Fax)
brewingtonj@ncat.edu
Project Coordinator
Marcia F. Williams, MBA
(336) 334-7589 • (336) 334-7540 (Fax)
marcia@ncat.edu

Northeast LSAMP

Dr. John Cunningham
Office of the Provost
University of Massachusetts Amherst
362 Whitmore Administration Building
181 Presidents Drive-9313
Amherst, MA 01003
(413) 545-2554 • (413) 577-3980 (Fax)
jcunningham@provost.umass.edu
Project Director
Susan Bronstein
(413) 545-5742 • (413) 545-4576 (Fax)
sbronstein@acad.umass.edu

Ohio LSAMP

Dr. Karen A. Holbrook
Ohio State University
190 N. Oval Mall
Columbus, OH 43210
(614) 292-2424 • (614) 292-1231 (Fax)
holbrook.79@osu.edu
Project Director
Dr. Jean E. Girves
(614) 247-7267 • (614) 292-3656 (Fax)
girves.1@osu.edu

Oklahoma LSAMP

Dr. Earl D. Mitchell, Jr.
246 Noble Research Center
Oklahoma State University
Stillwater, OK 74078-3035
(405) 744-6189 • (405) 744-7799 (Fax)
earl.mitchell@biochem.okstate.edu
Project Manager
Dr. Valerie Shangreux
(405) 744-6710/7820 • (405) 744-7799 (Fax)
valerie.shangreux@okstate.edu

Pacific Alliance LSAMP

Dr. Herb Schroeder
LSAMP Pacific Alliance
University of Alaska Anchorage
School of Engineering
3211 Providence Drive
Anchorage, AK 99508
(907) 786-1860 • (907) 786-1079 (Fax)
herb@uaa.alaska.edu

Peach State LSAMP

Dr. Michael Adams
Office of the President
The University of Georgia
The Administration Building
Athens, GA 30602-1661
(706) 542-1214 • (706) 542-0995
presuga@uga.edu
Co-Principal Investigator
Cheryl D. Dozier, DSW
(706) 583-8195 • (706) 583-8199 (Fax)
cdozier@uga.edu

Philadelphia LSAMP

Dr. Stephen W. Director
Senior Vice President and Provost
Drexel University
3141 Chestnut Street
Philadelphia, PA 19104
(215) 895-2200 • (215) 895-1056 (Fax)
director@drexel.edu
Project Director
Dr. N. John DiNardo
(215) 895-2200 • (215) 895-1056 (Fax)
dinardo@drexel.edu

Puerto Rico LSAMP

Dr. Manuel Gómez
University of Puerto Rico
P.O. Box 23334
UPR Station
San Juan, PR 00931
(787) 764-8369 • (787) 766-1293 (Fax)
Mgomez@upr.edu
Project Director
Dr. Ana C. Piñero
(787) 764-8369 • (787) 766-1293 (Fax)
a_pinero@prlsamp.org

South Carolina LSAMP

Dr. Andrew Hugine, Jr.
Office of the President
South Carolina State University
Campus P.O. Box 7008
Orangeburg, SC 29117-0001
(803) 536-7013 • (803) 533-3622 (Fax)
president@scsu.edu
Project Manager
Dr. Judith Salley-Guydon
(803) 536-8509 • (803) 516-4685
djsalley@scsu.edu

State University of New York (SUNY) LSAMP

Dr. Shirley Strum Kenny
Stony Brook University
President's Office
310 Administration
Stony Brook, NY 11794-0701
(631) 632-6265 • (631) 632-6621 (Fax)
Shirley.Kenny@stonybrook.edu
Project Director
Dr. David L. Ferguson
(631) 632-8763 • (631) 632-7809 (Fax)
David.Ferguson@stonybrook.edu

Tennessee LSAMP

Dr. Melvin N. Johnson
Office of the President
Tennessee State University
3500 John A. Merritt Blvd.
Nashville, TN 37209
(615) 963-7401 • (615) 963-7407 (Fax)
President@tnstate.edu
Project Director
Dr. Lonnie Sharpe, Jr.
(615) 963-5501 • (615) 963-7492 (Fax)
sharpe@coe.tsuniv.edu

Texas A&M University System LSAMP

Dr. Karan L. Watson
Associate Provost
Texas A&M University
MS 1126
College Station, TX 77843

(979) 845-4274 • (979) 845-1822 (Fax)
Watson@tamu.edu
Program Director
Dr. Karen Butler-Purry
(979) 847-9084 • (979) 845-6259 (Fax)
klbutler@ece.tamu.edu

University of Texas System LSAMP

Dr. Benjamin C. Flores
The University of Texas at El Paso
500 W. University Avenue
Engineering 301
El Paso, TX 79968
(915) 747-6961 • (915) 747-5243 (Fax)
bflores@utep.edu
Project Director
Ariana Arciero, M.P.H.
(915) 747-8725 • (915) 747-5243 (Fax)
avarcier@utep.edu

University System of Maryland LSAMP

Dr. Freeman A. Hrabowski, III
University of Maryland, Baltimore County
1000 Hilltop Circle
Baltimore, MD 21250
(410) 455-2274 • (410) 455-1210 (Fax)
hrabowski@umbc.edu
Project Director
Cynthia M. Hill
(410) 455-2445 • (410) 455-1028 (Fax)
chill@umbc.edu

Urban Massachusetts LSAMP

Dr. Paul Fonteyn
University of Massachusetts Boston
100 Morrissey Boulevard
Boston, MA 02125-3393
(617) 287-5603
paul.fonteyn@umb.edu
Project Director
Marshall Milner
(617) 645-8313 • (617) 517-7702 (Fax)
marshall.milner@umb.edu

Washington/Baltimore/Hampton Roads LSAMP

Dr. Richard A. English
Office of the Provost
Howard University
2400 6th Street, N.W.
Washington, DC 20059
(202) 806-2550 • (202) 806-4971 (Fax)
renglish@howard.edu
Executive Director
Dr. Clarence M. Lee
(202) 238-2511 • (202) 986-7752 (Fax)
cmlee@howard.edu

Western Alliance to Expand Student Opportunities LSAMP (WAESO)

Dr. Antonio Garcia
Hispanic Research Center
Arizona State University
PO Box 875403
Tempe, AZ 85287-5403
(480) 965-0840/8798 • (480) 965-8309 (Fax)
tony.garcia@asu.edu
Project Administrator
Michael J. Sullivan
(480) 965-0840/5388 • (480) 965-8309 (Fax)
michael.sullivan@asu.edu

Wisconsin LSAMP

Dr. Patrick Farrell
2640 Engineering Hall
1415 Engineering Drive
University of Wisconsin-Madison
Madison, WI 53706-1619
(608) 262-7764 • (608) 265-5290 (Fax)
pfarrell@provost.wisc.edu
Project Director
Dr. Manuela Romero
(608) 263-1138 • (608) 265-5290 (Fax)
Romero@engr.wisc.edu

Louis Stokes Alliances for Minority Participation

LSAMP



- LSAMP Active
- LSAMP Alumni
- LSAMP New
- ★ Tribal Colleges

PROGRAM DIRECTOR/STAFF:

Dr. A. James Hicks (ahicks@nsf.gov)
 (703) 292-4668 * (703) 292-9018 (fax)
 Martha James (mjames@nsf.gov)
 (703) 292-7772

LSAMP Program Specialist
 Margie Johnson (mcjohnso@nsf.gov)

MAP DESIGN:

Sanya N. Spencer (sspencer@nsf.gov)
 (703) 292-4686

CONTACT:

Division of Human Resource Development
 Louis Stokes Alliances for Minority Participation (LSAMP)
 (703) 292-8632; hrdamp@nsf.gov

