

CO-AMP Site Coordinators

Adams State College

Dr. Renee Beeton.....rbeeton@adams.edu

AIMS Community College

Dr. Steve Mills.....steve.mills@aims.edu

Dr. Carol Fiol.....carol.fiol@aims.edu

Colorado School of Mines

Khanh Vu.....kvu@mines.edu

Colorado State University

Arlene Nededog.....arlene.nededog@colostate.edu

Colorado State University-Pueblo

Dr. Jane Fraser.....jane.fraser@colostate-pueblo.edu

Fort Lewis College

Dr. Don May.....MAY_D@fortlewis.edu

Mary Mandelski.....MANDELSKI_M@fortlewis.edu

Metropolitan State College

Dr. Larry Johnson.....johnsonl@mscd.edu

Northeastern Junior College

Gail LaForce.....gail.laforce@njc.edu

Trinidad State Junior College

Derek Grubb.....derek.grubb@trinidadstate.edu

University of Colorado-Boulder

Dr. LaRuth McAfee...laruth.mcafee@colorado.edu

University of Colorado-Colorado Springs

Tina Moore.....tmoore@eas.uccs.edu

University of Colorado-Denver

Angela Marquez.....angela.marquez@ucdenver.edu

Tribal Alliances

Jicarilla Apache Nation

Stanford Salazar..... 505/759-3614

Navajo Nation

Leland Leonard..... 928/871-6744

Southern Ute Indian Nation

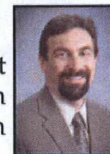
La Titia Taylor..... 970/563-0237

Ute Mountain Ute Nation

Robert Rime..... 970/564-5422

CO-AMP

Dr. Anthony A. Frank, CSU President
CO-AMP Governing Board Chairperson
Colorado State University System



Dr. Rick Miranda, PI/Program Director
Provost/Executive Vice-President
Colorado State University

Dr. Ernest Chavez, Co-PI
Professor & Chair, Psychology
Colorado State University



Dr. Beverly Marquart, Program Manager
100E Sage Hall, Colorado State University
Fort Collins, CO 80523-1879
(970) 491-6686; 1-800-835-8091
Beverly.Marquart@colostate.edu

Additional Management Team Members:

Dr. Hector Carrasco, Mr. David Aragon and Dr. Larry Johnson

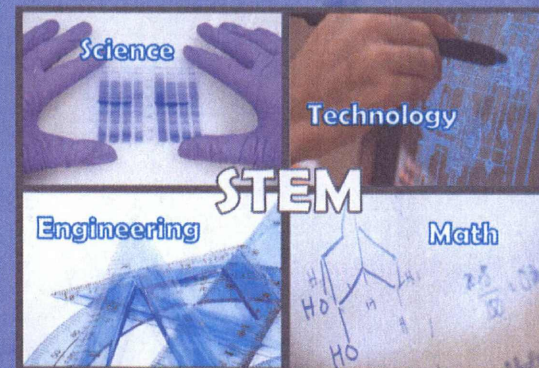
External Evaluator: Dr. Rose Shaw

National Science Foundation ~Investing in your future~

The Louis Stokes Alliance for Minority Participation programs support the establishment of comprehensive Alliances to increase the quantity and quality of students who successfully earn STEM baccalaureate degrees, and the number who go on for graduate study in these fields. This short-term objective facilitates AMP's long-term goal of increasing the production of minority Ph.D's in STEM fields with an emphasis on entry into faculty positions. The Foundation requires partnerships among academic institutions, government agencies and laboratories, industry, and professional organizations. These coalitions will produce multidisciplinary and/or disciplinary approaches to achieve the program goals at the undergraduate level. Success will be measured by the ability to bring about significant quantifiable and qualitative enhancements in minority STEM participation. Eligible activities include student enrichment, academic achievement, and curricula improvement.



*Linking diverse students to
educational opportunities in
Science, Technology,
Engineering, and Mathematics!*



Colorado
State
University

Louis Stokes Colorado Alliance for Minority Participation

Colorado Alliance for Minority Participation

(CO-AMP) is a National Science Foundation (NSF) program with a primary goal to double the number of underrepresented minority students (African American, Hispanic, Alaska Native, Pacific Islander, and Native American) receiving baccalaureate degrees in Science, Technology, Engineering, and Mathematics (STEM). Other goals include increasing the quality of education for these students and building the infrastructure for programs and activities that link public and private resources through structured funding and program development strategies. This program is not racially or gender exclusive.

CO-AMP's activities include:

Bridging: to facilitate smooth transitions from high school to college; from 2-year colleges to 4-year degree colleges and universities; from academic to professional careers or graduate school.

Graduate Placement, Outreach, and Tracking: to assist graduates with placement from 2 year colleges to 4-year colleges and universities and undergraduate to graduate school; to provide outreach activities; to track student achievements.

Undergraduate Research: to develop professional skills, critical thinking, and hands-on experiences through research.

Recruitment: to increase the number of high school students and associate degree transfer students into STEM baccalaureate degree programs.

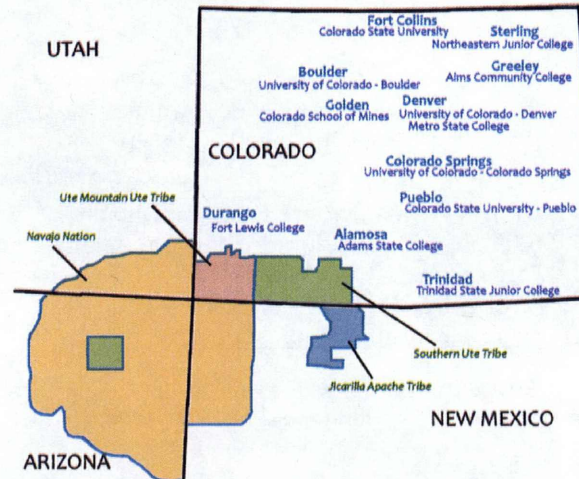
Retention Program: to provide transfer bridges, academic tutoring, Academic Excellence Workshops, faculty and peer mentoring, scholarships, and minority conferences.

Faculty Professional Development: to enhance the cultural and diversity awareness of faculty involved with program activities.



Curriculum Development: to develop effective teaching strategies in the sciences by restructuring STEM courses.

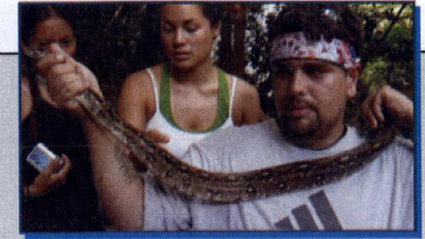
Serving Colorado and the Four Corners Region



CO-AMP is an innovative consortium of three community colleges, one junior college, and nine four-year colleges and universities. We are very proud of the partnerships that have been established with the four tribal nations: Jicarilla Apache Tribe, Navajo Nation, Southern Ute Indian Tribe, and Ute Mountain Ute Tribe. Corporations, government agencies, professional organizations, and community members also collaborate with CO-AMP to enhance student achievement.

CO-AMP is proud of the collaboration with the Colorado AGEP (Alliance for Graduate Education and the Professoriate) formed between the University of Colorado at Boulder and Colorado State University. NSF sponsored AGEP programs are designed to recruit and retain graduate students as future faculty members at higher education institutions in science, technology, engineering and mathematics.

Students interested in finding out more about CO-AMP and CO-AMP programs, please contact Beverly Marquart at beverly.marquart@colostate.edu or call 970-491-6686.



CO-AMP's...

Management structure: composed of a Governing Board, Management Team, Site Coordinators, Steering Committee, and industry/government representatives. CO-AMP's main office is located in Sage Hall at Colorado State University in Fort Collins.

Partners: pre-college links are developed by our association with participating local school districts. Graduate school connections are formed through networks with professional organizations and industry/government representatives.

CO-AMP NEEDS YOU!

Our success is based on a continually growing network of people and resources. If you can help by being a mentor or tutor for a CO-AMP student or can offer financial/in-kind donations that will help provide sustainability to CO-AMP programs, or collaborate as a CO-AMP partner, please contact us at our main office, phone number 1-800-835-8091, or any one of the 13 site institutions listed in this brochure.

Visit the CO-AMP website at:

www.coamp.colostate.edu

To learn more about
National Science Foundation
programs visit:
www.nsf.gov

